

Minnesota Quilters Meetings
Thursday, March 2, at 7 p.m. on Zoom
Saturday, March 4, 10 am in person and on Zoom

Charm Quilts
Dawn Cook Ronningen

Carolyn Silflow, mqp@mnquilt.org

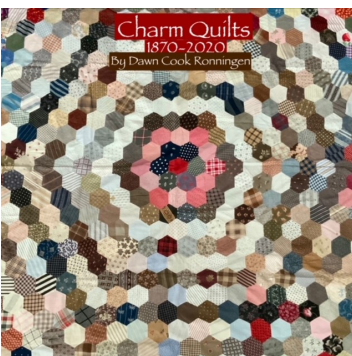
The Minnesota Quilt Project will sponsor Dawn Cook Ronningen presenting “Charm Quilts,” the MQ monthly programs on March 2 and 4. Dawn is a quilt historian, collector and maker. She is the author of two books on antique needlework tools and has developed patterns for several of the antique quilts in her collection. See her blog at <https://collectorwithaneedle.blogspot.com>. Dawn lives in Maple Grove.

Thursday’s program on Zoom will feature a 45-minute PowerPoint program with 10 to 15 minutes of additional time for discussion and questions. More than 20 charm quilt examples will be shown with high definition photography including some close-up views. The time span of examples cover 150 years. Learn about the history of American charm quilts, as well as how, who, what, why and when. If you love fabric, you will enjoy this program. Please note that no screen shots or recording are allowed.

Saturday’s hybrid program will feature an in-person trunk show of the same quilts. Following an introductory PowerPoint presentation, the actual quilts will be held for viewing. The program will also be available by Zoom. A fabric lovers delight. Please note that no photos or recording are permitted.



Fabric Dating Workshop “Charm Quilts – a Library of Fabrics”



A three-hour workshop will follow the Saturday program in the Fellowship Hall, beginning at 1 p.m. Dawn will begin with a presentation about dating cotton fabrics building on the charm quilt trunk show program. Charm quilts make wonderful study examples when learning about 19th century cotton fabrics. The workshop will provide primary resources for dating fabrics, circa dates and other clues to become fabric detectives.

We will break into small groups with each group using an antique charm quilt or quilt top and a list of study assignments. We will gather together as a group and review each study quilt in depth using your observations and known details about each example.

No photos or recording are allowed. Pencil and paper and gloves will be provided. Students are encouraged to bring fabric dating books from their personal libraries. Students must pre-register; class size is 20.

Register with this link: <https://cvent.me/rQXkWQ>

Hospitality

Sharon Lawrence, Kathy Loomis

Now that we have in-person meetings again, it would be great if members would bring snacks for the Saturday meetings. Any foods such as cookies, bars, fruit, etc. are welcomed during the coffee break at the Saturday meetings. Thank you.

Quilter’s Mosaic, a special event of MQ, will feature Mary Kerr on Friday, March 31. Watch for the invitation to register for her program called Quilting Old into Art. More information is on page 9.

Show Registration Dates and Deadlines

MQ member registration began January 17. Public registration began February 1. April 18 at 2 p.m. is the deadline for entering quilts in Judged, Non-Judged, Challenge and Youth categories. By May 5 quilt entry information will have been mailed to entrants. June 2 is the final day for Advanced Registration.

Board of Directors
Oct 1 2022 - Sept 30 2023

President

Wynn Martin
president@mnquilt.org

Past President

Mary Tague
pastpres@mnquilt.org

President-Elect

(Open)
preselect@mnquilt.org

Treasurer

Marcy Huggins
treasurer@mnquilt.org

Secretary

Colleen Backus
secretary@mnquilt.org

Communications Co-Directors

Pat Curtner, Karen Kopitzke
comm@mnquilt.org

Education Co-Directors

Liz McHenry, Laura Nagel
ed@mnquilt.org

Membership Co-Directors

Jan Schmidt, Mea Clift
membership@mnquilt.org

Operations Co-Directors

Reo Pratt, Kathie Simon
Frank
ops@mnquilt.org

Editor

Wanda Shelton
editor@mnquilt.org

MN Quilt Project Chair

Carolyn Silflow
mqp@mnquilt.org

MQ 2023 Quilt Show

Coordinators

Rose Allen, Yvonne Curran

mq2023@mnquilt.org

Employees

Show Director

Brenda Lyseng
showdirector@mnquilt.org

Bookkeeper

Amy Fennwald
bookkeeper@mnquilt.org

Office Manager

Debra Svedberg
quilter@mnquilt.org

Hard copies of the newsletter will be available for an additional \$20 at the time of membership renewal. This charge is to cover the cost of printing and postage. Cash and checks welcome.

Upcoming Events

Wednesdays, Quilting for Others, 11 am to 1 pm, pick up supplies and drop off finished work at Recovery Church,

March 2 and 4, Member Meetings, 7 pm Thursday on Zoom, 10 am Saturday in person and on Zoom

March 5, Quilting Together via Zoom, 10 am to 4 pm, links on page 11

March 9, Executive Committee Meeting, 10 am on Zoom

March 13, Quilting Together on Zoom, 10 am to 4 pm

March 16, Finance Meeting, 2 pm on Zoom

March 20 to 23, Spring Getaway, Camp Wapo

March 21, FLAP meeting, 1 pm

March 22, QFO work day, 10 am to 2 pm, Recovery Church

March 23, Executive Committee Meeting, 10 am on Zoom

March 25, Show Committee Meeting, 9 am on Zoom

March 27, Quilting Together on Zoom, 10 am to 4 pm

March 28, Board Meeting, 6 pm on Zoom

March 31, Quilters Mosaic, special event with Mary Kerr

April 13 and 15, Member Meetings, Bonnie Lundorff of Willow Wood Market in Bemidji with Crazy Quilting with Wool class following the Saturday meeting.

April 30, Workshop with Robin Long, 11 am to 5:30

May 4, Member Meeting, Japanese Yakuta Quilts

May 6, Garage sale

June 15 - 17, 2023, The Minnesota Quilt Show, River's Edge Convention Center, St. Cloud, Minnesota

More calendar information on the MQ website <http://www.mnquilt.org/.html>

Directions and a map to MQ are shown at <http://www.mnquilt.org/location.html>

DEADLINE for April Newsletter: Tuesday, March 7. Send newsletter articles and photos to editor@mnquilt.org. *Later submissions may be saved for the following month's newsletter.* The newsletter deadline is normally the Tuesday after the Saturday meeting. Send Show and Tell photos to showandtell@mnquilt.org. Include descriptions if you wish.

COVID-19 Guidelines for MQ meetings:

Minnesota Quilters, Inc. considers the health and safety of all our members, staff and guests to be our top priority. Our COVID policy is to follow guidance by city, state, and CDC. CDC Currently advises following guidelines by county, using the information at the link at the bottom of this notice.

At this time, COVID community levels for all counties in the Twin Cities Metro area are designated as low, and therefore, we recommend our members and visitors stay up to date with COVID-19 vaccines and get tested if they have symptoms. At this risk level, masks are optional. People may choose to mask at any time. People with symptoms, a positive test, or exposure to someone with COVID-19 should wear a mask. We will continue to monitor the county data published by the CDC in making ongoing determinations. If you have questions, CDC info can be found at the link below. <https://www.cdc.gov/coronavirus/2019-ncov/your-health/covid-by-county.html>

Thank you for your patience in this ever-changing environment.

Mission Statement (Our Purpose)

The mission of Minnesota Quilters, Inc. is to nurture the art and craft of quilting through inspiration and education, to support our communities through our craft, and to honor our quilting heritage.

Vision and Value Statements <https://mnquilt.org/aboutmq.html>

SignUpGenius: <http://www.signupgenius.com/go/minnesotaquiltersinc>

MQ needs your help. Please click on this link to see what help we need. Please take a look at the Show Volunteer needs to see if you are able to help.

The site lists volunteer opportunities. Save the link for additional ways to participate in MQ activities and volunteer often and in any capacity that you can.



The Minnesota Quilt Show
June 15 - 17, 2023
River's Edge Convention Center, St. Cloud

The Minnesota Quilt Show
How it's Progressing

Brenda Lyseng
showdirector@mnquilt.org

A few people have asked how the planning is going for the show. Since our January Reveal Meeting, you can't escape the fact that we are hosting our annual show June 15 through 17 in St. Cloud.

Behind the scenes there is a lot going on. We dropped off or mailed our marketing packets to 450 quilt shops and retreat centers; our full page ad in the All Minnesota and All Iowa Shop Hop magazines is being seen; our Facebook page dedicated to the show is picking up followers. The various websites related to the show are published and taking registrations and entries. Faculty, who have been lined up for months, are now seeing students registering for their classes. Banquet plans have been decided and in-kind donations are being made. Thank you to all the Show Committee members and the extra volunteers who have pitched in.

Advanced Registration is 10% above last year's numbers at this point and that is excellent news. Advanced registration is \$35 for members and \$45 for nonmembers. That is the way to go if you plan to be at the show more than a day, take a workshop, or attend the banquet. As I write this on February 8, two workshops are full and three almost full. Personally invite your quilting friends to join you.

Vendor registration is slower than it was last year. Other national shows are experiencing this as well. Many long-time vendors that went from show to show decided to retire or sell online only when the pandemic hit. We have all changed how we do business and buy our products, and that holds true for our vendors as well. Unfortunately, our show is the same weekend as the Kansas City Regional Quilt Festival, and because that show is every other year, some vendors have chosen that show. I've been in touch with the organizers and we are working to make sure our dates aren't the same again. On the positive side, this is a great time for a quilting-related business to try out our show. If you own a quilt shop, design patterns, sell quilting or fiber arts materials, give me a call. We are also open to having quilt shops share a booth. We do have many new vendors, and more vendors will continue to sign up through the spring. Check the list on the show website.

If you would like to join this behind-the-scenes planning, please watch for calls for volunteers in the Thursday Thimbleful and volunteer at SignUpGenius. We would love to use your talents.

Greetings from Show Coordinators

Rose Allen, Yvonne Curran, showcoordinator@mnquilt.org

It's March. Have you registered for The Minnesota Quilt Show yet? What classes are you taking? Have you made a hotel reservation? How is work progressing on the quilt you plan to enter?

To answer these questions and more, check out the Trip Planner Page on the show website. At mnquilt.org, click on Shows, then click on 2023 Show and then click on Trip Planner, or click this link: www.mnquilt.org/mq2023.

We have a fabulous lineup of classes. Here are a few.

- Want to up your skill quilting with a walking foot? Check out Christa Watson.
- Learn the ins and outs of bag construction with Barb Walster.
- Explore art quilting with Debra Boschert.
- Dye fabric with Sue Cortese.
- Make a miniature quilt with Cindy Erickson.
- Transform clothing into quilts with Luke Haynes.
- Make a t-shirt quilt with RaNae Merrill.

The list goes on. Classes are filling; claim your spot. Check out all the classes at: <https://cvent.me/rKydWQ>.

What would a quilt show be without quilts? We want to see your creations. Enter your quilts in Judged, Non-Judged, Youth or Challenge until April 18 at 2 p.m. See www.mnquilt.org/mq2023 for quilt entry information.

One more thing – help us get the word out about the show. Share your excitement with friends and family. Plan your carpool group. Get your guild buddies involved. Check out SignUpGenius to volunteer.

See you at the show.

Connecting with Local Quilt Guilds

Yvonne Curran, showcoordinator@mnquilt.org

We are excited to invite your guild to The Minnesota Quilt Show. The website, www.mnquilt.org/mq2023, has details about the classes, special exhibits, events, and more. From there you will find links for Quilt Entry, Vendors/ Sponsors and Chartered Bus Tours registration.

We would love to have your guild and guild members participate in our show.

- Pick a day to attend as a guild. Perhaps you'll even have matching outfits so we can identify you. One of the new features we are working on is a Sewcial Lounge, a space to keep working on your workshop projects or just to chat and meet other quilters. This could also serve as a meeting space for your guild.
- Join our Connect Table. This feature was successfully launched last year. The Connect Table is for quilt guilds to share information about their guild to show attendees. Sign up for one or two two-hour slots. Contact Yvonne at showcoordinator@mnquilt.org.
- Sign up for a workshop.
- Arrange a chartered bus for your guild to the show. See our website for added benefits and registration.
- Advertise in our Show Guide which is handed to all show attendees.
- We are available to present at your guild meetings. We can talk about features of the show or about Minnesota Quilters in general for five minutes or an hour, you decide. We will include a couple of door prizes as well, daily admission tickets to the show and vouchers for our monthly meetings.
- Join our Facebook page, The Minnesota Quilt Show.

Meet the Teachers 2023

Theresa Miedema, Maureen Ohland, faculty@mnquilt.org

If you missed seeing the teachers for The Minnesota Quilt Show via Zoom, you can watch the recordings on MQ's YouTube channel. As we've done in recent years, we hosted Zoom meetings where teachers presented their classes and discussed their styles. Viewers asked questions to determine which workshops were just what they'd enjoy. Three evenings had three instructors at each event. Please view as many Meet the Teacher sessions as you'd like. Each session was recorded and is available on our YouTube channel <https://www.youtube.com/@minnesotaquiltersinc>. Each session was sponsored by one or two quilt shops so you can learn about these shops as well.

First were Deborah Boschert, Luke Hayes and Christa Watson. This session of Meet the Teachers was sponsored by Quilted Dog Quilt Shop.

Next were Barb Walster, Sue Cortese, Barbara Kuklok and RaNae Merrill. This session was sponsored by Gruber's Quilt Shop.

Our third session had Susan Cleveland, Linda J. Hahn, Cindy Erickson and Jane Sassaman. This session was sponsored by Affinity for Quilts.

Classes are filling fast. A few are already sold out. Be sure you check the website and sign up for some of these amazing classes to create an art quilt, make a mini, or try to turn those old dungarees into a quilt to remember. Or purchase a lecture pass to learn about appraisals, judging or quilt preservation. The Minnesota Quilt show has something for everyone so gather your friends and join the fun.

If you decide to transfer into a different class, please call the office for assistance.

Bus Tours

Kathie Simon Frank, Margaret Lundberg, bustours@mnquilt.org

The wheels on many buses will go round and round to The Minnesota Quilt Show in St. Cloud this June.

Gas prices are up, our lives are busy, driving is a hassle, it's more fun to look at quilts than for a parking spot, and most importantly it's just plain fun to go to the quilt show with friends. The solution is to join a charter bus tour to the quilt show.

Or ask your local guild to arrange one.

Or why don't you arrange one for yourself and 20 or more of your friends.

Go to mnquilt.org, click on Shows, then 2023 Show. At the top of the page, click on Trip Planner for information about bus tours. Or contact Kathie or Margaret at bustours@mnquilt.org with your questions.

People to meet at the show:

2023 Quilter of the Year—**Karla Overland** and the Cherrywood Challenge

2023 Scholarship Recipient—**Samantha Ziegler**

Banquet Speaker—**Susan Cleveland**

Quilt Auction Donations

Elizabeth Murray, smallquiltauction@mnquilt.org

Quilt Auction is a highlight of The Minnesota Quilt Show. Quilt Auction provides quilt lovers with an opportunity to bid on a work of art or a cozy lap quilt either at the show or remotely through Silent Auction Pro.

The success of Quilt Auction depends on donations and bidders. This month we are focusing on donations.

What items have been popular with the bidding public? Any new or like-new item made by a quilter or sewist qualifies, including purses, bags or clothing. Wall hangings, table runners, and placemats are much appreciated, especially with seasonal themes like Halloween or Christmas. Last year we expanded our accepted sizes to include quilts up to twin bed size. These quilts were much appreciated, and most were sold at the auction.



We also seek smaller items for the Buy it Now table. Recent donations of potholders, pillowcases, pincushions, aprons (especially parent/child sets or just child) and zippered pouches may give you ideas of projects to create. This is a great way to use cute or seasonal prints.

Funds raised by contributions to Quilt Auction are donated to Minnesota Quilters, Inc., a 501(c)(3) non-profit, and are used to support our quilting community's mission of education, outreach and mentoring.



The Minnesota Quilt Show Masquerade Banquet ... at Best Western Plus Kelly Inn, St. Cloud

Terri Kryson, Jean Carr
banquet@mnquilt.org

Have you completed your registration and signed up for The Minnesota Quilt Show Masquerade Banquet? It's going to be epic.

We are revealing new details that will add to the fun and frivolity of the evening.

First, we are offering a new opportunity for you to support the Masquerade Banquet and get primo seating for you and nine of your quilting besties. Starting March 1, you will be able to log into Cvent to purchase a table of ten seats for \$50.

(You and your table besties must all be registered for the banquet (with meals selected) to take advantage of this offer.)

This will guarantee your seats at one of the best tables in the room. This option will be available on a first come and first served basis and is limited to only ten tables at this year's Masquerade Banquet. All other tables will be "festival seating" and open to all banquet attendees.

Our next reveal.....Quilters are the most creative in everything we do. So, we are challenging you to create a Masquerade Mask that captures your true self for the evening's festivities. We have a few options to make your quest easier through MQ's merchandise table at the monthly MQ Saturday meetings. You can purchase a mask form for \$5, or you can purchase a decorated mask for \$15 that you can wear and/or upcycle to expose the real you. There's always the option of making your own mask from papier mâché using a YouTube video, and there are plenty to choose from on that site alone. Envision walking into this beautiful room – will anyone recognize you?

Now that you're dreaming about how spectacularly magical you will arrive in your mask, our third reveal is the Mask Categories that will bestow beautiful prize baskets to the winners in each of these six categories:

- Most Outrageously Flamboyant
- Most Colorfully Conceived
- Most Beautifully Bedazzled
- Most Panache with Prairie Points and Precision
- Most per-SUEDED with Cherrywood
- Most Regaled by the Quilting Police

The stage has been set and the challenge revealed. This is your moment to embrace the beauty and mystery of the evening as you create your mask. We can't wait to meet the you you've chosen to reveal.

Judged Exhibit Entries

Kate Eelkema, Sarah Parker, judged@mnquilt.org

Are you busy working on the quilts you plan to enter into the Judged competition at The Minnesota Quilt Show in June? If you are not sure which category to enter, please contact us at judged@mnquilt.org so we can help you decide which category would be the best fit for your creation.

When you are ready to register your quilts, be sure to click the link to the worksheet and read it first so you can have everything ready when you begin to register. If you still need help, e-mail quiltentryhelp@mnquilt.org. Each person may enter up to two quilts, and each entry must be in a different category.

As mentioned in an earlier newsletter, two categories that usually do not have many entries are Wholecloth and Miniature, so entering either of these would increase your chances of winning a ribbon.

Wholecloth quilts do not have any piecing or appliqué; instead the quilting stitches themselves create the entire design of the quilt top. The quilting may be done by hand or by machine. This year we are allowing a minimal amount of bead or crystal embellishments on Wholecloth quilts, in case you want to add a little sparkle to your entry.

The Miniature category often has entries that are small wall quilts, but not miniatures. To be a true miniature, all aspects of the quilt must reflect a proportionally reduced scale of a full sized quilt. That means that if you enlarged every part of the miniature to a large quilt, each area would still look appropriately sized for that quilt. Here are two examples of true miniature quilts, both made by Amy Pabst. Thank you, Amy, for sharing your amazing work.



This schoolhouse quilt is 15" by 18" which means each of the schoolhouse blocks is only about 2". If you enlarged this enough to make a full sized quilt, the schoolhouse blocks would still look appropriately sized, as would the sashing and border strips.



This pineapple quilt is 10" by 11" so each block measures 1" by 1". If this were enlarged to 100" by 110", each block would be a 10" square, also a very appropriate size for that quilt.

2023 Challenge Packets

Karen Kopitzke, Pat Curtner, challenge@mnquilt.org

Challenge packs for 2023 are available until March 30 unless sold out by then. Choose Full Bloom or New Beginnings. The cost is \$20 (\$21.58 including sales tax). Each packet contains four fabrics, the rules for the 2023 challenge, and instructions for submitting your quilt, delivering it, and claiming it after the show. Packets may be purchased at in-person meetings or on MQ's online shop or when you register for the show.



Some of you have had your packets for quite a while and some of you are purchasing now. Here are a few reminders.

- Refer to the instructions in your packet.
- The packet includes your quilt receipt for you to fill out before delivery.
- The packet has two tags, one for your quilt and one for your quilt bag. If you are missing a tag, contact quilt-entry@mnquilt.org and we will mail one to you.
- The 2023 Challenge quilts are entered online like other quilt entries. You have already paid a registration fee by purchasing your packet so there is no charge.
- Entry deadline for all quilt exhibits is Tuesday, April 18, 2023.
- All entrants will receive an e-mail in early May with more information.

Now turn that fabric into an amazing entry.

Last year we asked members and show attendees to create twin-size quilts for Avivo Village, a remarkable collection of tiny homes sheltered within a larger warehouse space in Minneapolis. We set a goal of delivering one quilt for every bed in the village, and we expect to complete our promise during this year's show.

Option 1 – To continue our mission we ask you to create a twin-size quilt that will be exhibited at the Minnesota Quilt show in June after which it will be delivered to Avivo. Having served Minnesota since 1960, Avivo specializes in helping individuals and their families who face complex barriers to success – poverty, homelessness, unemployment, chemical addiction or mental health concerns. Avivo helps nearly 15,000 people each year to achieve recovery, employment and economic advancement.

Option 2 – Create a smaller quilt, lap-size or child-size, that can be donated to a location in Baxter, Minnesota. Why Baxter? Because it's the home of Karla Overland, this year's Quilter of the Year. Perhaps you'll decide to add a bit of Cherrywood fabric to that one but it's not required.

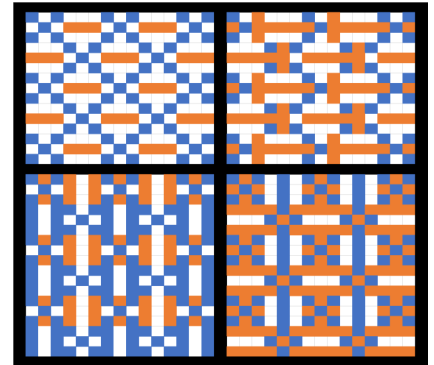
Here are the details. We're asking for two-block quilts, using no more than three colors. Ideally, we will receive quilts that work well for both male and female recipients. If you can, find two blocks that create a secondary pattern when placed next to each other. For example, if you use a nine-patch block in combination with a three-rail, you get secondary images that might look like these four examples.

The rules:

Two blocks, three colors, secondary pattern. Twin size or smaller.

Which two blocks will you use to create a secondary design?

Details for entering the President's MQ Invitational can be found on the show website. To donate your quilt, please drop it off at the MQ office 4 p.m. on May 31, or at the volunteer desk at the show on Monday, June 12, between 10 a.m. and 4 p.m..



Non-Judged Quilt Entries

Wanda Shelton, Diane Rose, nonjudged@mnquilt.org

The Non-Judged exhibit at The Minnesota Quilt Show is a delightful mix of quilts in a variety of styles and a rainbow of colors. Attendees marvel at the variety of themes expressed in fabric. Quiltmakers love to show their entries to family and friends. Every quilt looks stunning when hung vertically in a black-draped bay—it's much more impressive than when the quilt is turned down on a bed or lying across the back of a couch.

This exhibit is open to all MQ members with no charge for entering one or two quilts. The entry fee for non-members is \$15 per entry. Quilts in this exhibit are eligible for ribbons and prize money. Yours might win any of these:

- Viewer's Choice Awards, \$250 each for Large Quilt and Small Quilt winners
- Mayor's Award, chosen from quilts made by members of Minnesota Quilters
- Minnesota Award, a special recognition to quilts created entirely by Minnesota residents. The prize money was donated anonymously specifically for this award. First place \$250, second place \$175, and third place \$75.
- Special recognition ribbons are awarded by the MQ President, 2023 Show Coordinators, Show Faculty, Site Security Team, and St. Cloud Mayor. Non-Judged quilts are considered along with Judged quilts for these ribbons.

Quilt entry is done online. It must include a photograph of the quilt which we use to plan the layout of the exhibit. The photos can be casual shots of the quilt top and the quilts do not need to be finished in the photos.

Next month's newsletter will explain what happens to your quilt on its journey to the show, at the show and back to you. It will have tips on how to make the process easier for you and for our volunteers during quilt hanging and takedown.

Please complete your Non-Judged entries so all the show attendees can see the creative work of MQ members and others. We are looking forward to your quilts!

Important Dates for Cancellation of Advanced Registration

On or before February 15: 100% of all fees for classes, lectures, and special events will be refunded. No refund of registration fee or membership purchases.

On or before March 17: 80% of all fees for classes, lectures, and special events will be refunded. No refund of registration fee or membership purchases.

March 18 through April 21: 50% of all fees for classes, lectures, and special events will be refunded. No refund of registration fee or membership purchases.

After April 21: No refunds unless cancellation insurance has been purchased. No refund of registration fee or membership purchases.

From the President

Wynn Martin, president@mnquilt.org

I was recently asked to explain why MQ is different from other guilds. I answered that we have a broad mission to teach how to quilt, provide quilts to our greater community, and to celebrate the art of quilting through our show and other quilt documentation and education programs. This work is like other guilds but at a scale and scope that is well beyond that of other guilds.

Also, this year's budget for MQ is close to \$400,000 – one more sign that we are different from the average quilt guild. Most guilds have volunteer needs, but once again, we need more volunteer support. I know, it's tiresome. We ask for volunteers at every meeting. Here's a quick peek at why we need so many volunteers. As you read through the list, please think about how you can give back to our quilting community by volunteering either in person or virtually. We remain grateful for your support.

President: Wynn Martin (president@mnquilt.org)

Responsibilities: Provide strategic direction for the organization, supervise staff and special committees.

- Employee supervision: Office manager, bookkeeper and show director
- Minnesota Quilt Project: Carolyn Silflow (mqp@mnquilt.org)
- Quilting For Others: Diane Rose (qfo@mnquilt.org) and countless other volunteers
- Textile Center Liaison: Kathie Simon Frank
- Executive Committee: President, Past President, President Elect and Treasurer
- Select Textile Art award winner in Fine Arts category at Minnesota State Fair

Past President: Mary Tague (pastpres@mnquilt.org)

Responsibilities: Financial investing and board recruitment

- Standing Committee: Nominating Committee needs four volunteers with past experience on board or committees at MQ

President Elect: OPEN

Responsibilities: Fundraising, MQ grants, scholarship and parliamentarian

- Standing committees: Faculty Lectures and Programs (FLAP) and Strategic Planning

Treasurer: Marcy Huggins (treasurer@mnquilt.org)

Responsibilities: Liaison to CPA, credit card account and merchant account

- Finance Committee: Treasurer, President, Past President, President Elect, and Secretary

Communications Co-Directors: Pat Curtner and Karen Kopitzke (comm@mnquilt.org)

Responsibilities: Supervise and direct work of communications volunteers

- Electronic Communications: OPEN
- Newsletter: Wanda Shelton (editor@mnquilt.org)
- Public Relations/Media/Marketing: OPEN
- Technology Services: OPEN
- Website Coordinator: Needs two to three volunteers
- Special Committees: Needs four to five volunteers
- Grant Issuance: TV stations
- Facebook:
- Photographer:
- State Fair Booth: Sue Rutford (statefair@mnquilt.org)

Membership Co-Directors: Jan Schmidt and Mea Clift (membership@mnquilt.org)

Responsibilities: Grow membership (both individual and business members), make members feel happy to be part of MQ, promote volunteering, including activities that extend MQ's presence in greater Minnesota through interactions with guilds and businesses

- Business Membership Coordinator: OPEN
- Day and Evening Hospitality Coordinators:
- Day and Evening Membership Greeters: two to three individuals per meeting
- Volunteer Coordinator: Linda Wines, need two to three more coordinators

Show Director (Staff position)

Responsibilities: Show direction and management, budget management for show, fundraising for the show

- Show committee includes 15 subcommittees and two lead coordinators for each show
- Cvent coordinator: Need two to three individuals with ability to manage Cvent technology, year round

Education Co-Directors: Liz McHenry and Laura Nagel (ed@mnquilt.org)

Responsibilities: Develop, recruit, and schedule all non-show programming

- Special Committees: Four to six volunteers needed to assist with annual brunch, Block of the Month, Saturday coordinators and Zoom coordinators
- Fall Getaway: Dee Legvold
- Spring Getaway: Leah Doherty
- Historian/Librarian: OPEN

Operations Co-Directors: Reo Pratt and Kathie Simon Frank (ops@mnquilt.org)

Responsibilities: Meeting management/set-up, plus human resources, insurance, PCI compliance, state fair ribbons, space and equipment management, other business services (phone, Internet, etc.)

- We need two individuals to step forward for October 1, 2023

Thanks for volunteering.
Wynn Martin, President

SignUpGenius: <http://www.signupgenius.com/go/minnesotaquiltersinc>

Quilters Mosaic

Liz McHenry and Laura Nagel, ed@mnquilt.org

Friday, March 31, our next Quilter's Mosaic will feature Mary Kerr, an award winning quilter, teacher, speaker and author. Her 30-plus year career brings a depth of knowledge and inspiration to the quilting community. Join us as she shares her ideas on ways to work vintage textiles into new compositions that will honor both past and present quilting trends. During "Quilting Old Into Art," Mary will share quilts from her collections to illustrate how to expand your quilting skill set and create an original design in the process. This is a virtual presentation. Watch for registration invitation.

What is Quilter's Mosaic? According to the mission statement of Minnesota Quilters, Inc., we nurture the art and craft of quilting through inspiration and education, support our communities through our craft, and honor our quilting heritage.

Quilter's Mosaic was created to accomplish these goals. Three times a year, once each quarter (excluding summer when we have the annual quilt show), Education and Faculty, Lectures and Programs (FLAP) committees will seek a presenter to broaden our quilting horizons. These programs will be in addition to our monthly meetings and show offerings. Times will vary based on speaker's availability and time zone. When contractually possible, programs will be recorded to be viewed at a later time if the original time is inconvenient. Registration is required and will be e-mailed to our membership prior to the event.

We launched the series with Kathy Doughty's virtual visit from Australia. She is the owner and creator of Material Obsessions shop, patterns and fabric designs. Her presentation revealed her creative process, sources of inspiration, and examples of works in progress. Mary Kerr will be our second program. We welcome suggestions for future programs at ed@mnquilt.org.



April Meetings Preview

Soft Summer Blooms – Wool Crazy Quilting

Liz McHenry, ed@mnquilt.org



Happy Birthday to Minnesota Quilters! Our celebration on April 13 and 15 includes a program and workshop on crazy quilting with wool.

Bonnie Lundorff is coming, and she is all about wool applique. Join her as she teaches just how easy crazy quilt piecing with wool is as you create this 12" block. Her original design was featured in the magazine *Wool Works*. Learn Bonnie's unique tips and tricks for wool appliqué with the sweet little bouquet of flowers stitch onto the block. The block can be finished in a variety of ways that will be shown in class. See the MQ website to register.

The Thursday meeting will be Zoom only, and the Saturday meeting will be in person and on Zoom. We are setting up a Crazy Quilting with Wool class for Saturday afternoon. Details are coming later.

Bonnie's website is <https://www.willowwoodmarketdesigns.com/page/page/4237891.htm>.



February Meeting Highlights

Liz McHenry, Laura Nagel, ed@mnquilt.org

Robin Long was truly an inspiration to all who attended her lecture. She made the Mariner's Compass block, one of quilting's most intimidating blocks, accessible to all skill levels. Her unique ruler and strip piecing process allows quilters to make numerous sizes of accurate blocks with a variety of centers and settings. The patterns and quilts showed unlimited possibilities of using these blocks in traditional and modern settings. The best part – no paper piecing. Visit her website www.robinruthdesign.com for further details, product information, and online instruction. She is offering our members a 10% discount, code MQ10, until April 30. Robin will teach a virtual class on Sunday, April 30, from 11:30 a.m. until 5:30 p.m. Watch for the evite.



During the Saturday meeting break we celebrated Brenda Lyseng's 60th birthday with song and cookies, followed by announcements, show-and-tell, and door prizes.

Every month we see an increase in attendance at MQ meetings. Thursday evening's Zoom had 143 viewers, and Saturday's hybrid meeting had 54 in-person attendees and 41 people joining on Zoom. Thank you all for attending. Our tech crew is becoming more proficient in running the hybrid meetings and would still like to find one or two more volunteers to assist. Contact ed@mnquilt.com for more information.

The Minnesota Quilt Show promotion packets for quilt shops were available at the Saturday meeting. If you would like to visit a shop near you, or take a road trip, there are still packets remaining for various shops in state. You can also adopt a shop by donating \$3 postage to have one mailed. Our goal is to have these distributed before the All Minnesota Shop Hop which begins March 1.

What Do You Bring to an MQ Meeting?

Jeanne LaMoore

I recently cleaned out my MQ meetings bag and came across a note, my pre-Covid checklist for going to meetings. Here's what it included: nametag, hand project, camera, treats (and/or money), BOM stuff, and attitude

The list was from a few years ago, when I worked on Block Of the Month (BOM) and apparently didn't yet use my smartphone as my main camera. As I got ready to toss the list in the recycle bin, I wondered what my new list might look like.

I've already gotten in the habit of leaving my name tag in my MQ bag. I also keep a spare travel mug for coffee. Do I still pack my positive attitude? I now have a separate bag for Free Table items which reminds me to pick up anything I brought that hasn't gone home with someone else, so I haven't left cleanup work for other MQ members. It would be great if I included Bring a Sewing Friend or Finished Project to Share, but I try to be realistic. I may have to make a revised list ...but definitely one that includes treats. What's a meeting without treats?

Show and Tell Thank you to Maureen Ohland for these photos from Saturday's in-person meeting.



Candace Clemmons



Sharon Lawrence



Rita Culshaw



Jan Schmidt



Mary Ann Baraibar



The effort to distribute show information to shops, guilds and retreat centers throughout Minnesota and neighboring states. Happy birthday to Brenda.

Quilting for Others

Diane Rose, Merle Pratt, qfo@mnquilt.org

This month I would like to share stories. One of our frequent volunteers regularly drops off finished quilts at Tubman shelter in Maplewood. The staff member who received the quilts told her that recently a young man brought a female friend of his to the shelter to help her leave an unsafe situation at home. While she was being admitted in another room, the man told the staff member that he knew to bring her there because he had spent some time at Tubman as a young child with his mother and knew it was a safe place. He was very excited about the quilt that he had received as a child and said he still had it 20 years later. I was very moved by this story and how a quilt was able to impact a small child and many years later, help him to help a friend in need. Last year we donated 84 quilts to Tubman. We never know how our donated quilts help the recipients.

This week we got a call from Pam Plocek, a regular contributor to Quilting for Others. A friend of hers, Diane Goodman, was an active quilter but was moving to assisted living. She had a number of quilts that her family didn't want and she was going to bring them to Goodwill. Pam intervened and said QFO would be happy to have them and would make sure they went to people in need. So Pam loaded up her car and brought them to us, all 33 of them. They are all beautiful and many are hand-quilted. Many thanks to Diane for her generous donation and to Pam for helping to get the quilts to us.

We use a lot of batting and always need UPC labels from Hobbs batting packages. Because we are a nonprofit organization, Hobbs sells us rolls of batting at cost plus shipping plus five UPC codes per roll. Save your labels and mail them to MQ or bring them to a meeting. Thanks!

We are planning a work day the fourth Wednesday each month from 10 a.m. until 2 p.m. Clear your calendar and join us at Recovery Church on March 22.

Quilting Together on Zoom in March

Join fellow quilters for three days of sewing via Zoom. Click the links below to participate when your schedule allows. Get to know the regular attendees and become one of them. Sew on your project at your own pace and enjoy the conversations.

Monday March 6, 10 a.m. to 4 p.m.

<https://us02web.zoom.us/j/85998131671?pwd=RkxyckR4dFNGb08wMFJFWCtCL0piUT09>

Meeting ID 859 9813 1671 and passcode 663227

Monday March 13, 10 a.m. to 4 p.m.

<https://us02web.zoom.us/j/88305066116?pwd=QmpKRWIRa0ZrTyvSkoyUzdIRERDZz09>

Meeting ID 883 0506 6116 and passcode 355851

Monday March 27, 10 a.m. to 4 p.m.

<https://us02web.zoom.us/j/83640957227?pwd=ZytKUkpLcnk3ZVovZ29oc09QVmxzUT09>

Meeting ID 836 4095 7227 and passcode 396177

Clamp Lights for Sale

Brenda Lyseng
showdirector@mnquilt.org

Light up the dark corners of your sewing space, basement, or garage with handy clamp lights. Minnesota Quilters no longer needs these lights, so we are offering them for sale. The lamps have 8.5" metal shades and six-foot cords. They are for sale at MQ's online site or at monthly meetings. Pick up the lights at the office as shipping is not available. The cost is \$6.49 plus tax.



Bulletin Board

Now through July 1, 2023, **MAAHMG, the Minnesota African American Heritage Museum and Gallery**, Community Quilt Project exhibits 14 quilts expressing Black history, Black joy, love, family, racial justice, civil rights, Black liberation, gun violence, healing, and Juneteenth – freedom. There is also a quilt honoring Prince created during painting of the Prince mural. 1256 Penn Avenue N., Minneapolis. Tuesdays – Fridays 1 pm to 5 pm, Saturdays 10 am to 2 pm. Free admission. Contact Tina Burnside, Info@maahmg.org

March 1 – 31, **Modern Quilt Walkabout show, Lake Superior Modern Quilt Guild** at Duluth Pottery, 1924 W. Superior Street, Duluth, and Enger Lofts, 1832 W. Superior Street, Duluth. See lakesuperiormqg.com for information on hours and special events.

If you know of a quilt show or other quilting event scheduled in the next six months, e-mail details to editor@mnquilt.org. Include the event name, the organization producing it, dates, address, admission, contact and other details.

Thank you to these 2023 sponsors of The Minnesota Quilt Show.

~ ~ Gold Sponsors ~ ~



www.bernina.com

Aurora, IL

St. Cloud Sewing Center

St. Cloud, MN

320-251-6540

www.stcloudsewingcenter.com

Pine Needles Quilt & Sew

Rochester, MN

507-226-8480

www.pnqs.net



Country Loft Quilt & Design –
Innova

Forest Lake, MN

651 464 6260

www.countryloftquilt.com

~ ~ Silver Sponsors ~ ~



Cherrywood Hand-Dyed Fabrics

Baxter, MN

888-298-0967

www.cherrywoodfabrics.com



Just Sew Studio

Waite Park, MN

320-654-1580

www.justsewstudiomn.com



St. Cloud Sewing Center

St. Cloud, MN

320-251-6540

www.stcloudsewingcenter.com

Show Committee Meetings are generally the fourth Saturday of the month at 9 a.m. on Zoom. A few committees can take more members. Which one can you join?

Who's Who on the Show Committee

Show Coordinators (2) Rose Allen, Yvonne Curran

Admissions (2) Loretta Stone, Sharyn Resvick

Advanced Registration (2) Linda Wines, Mary Nelson

Banquet (2) Jean Carr, Terri Krysan

Bus Tours (2) Kathie Simon Frank, Margaret Lundberg

Challenge 2023 & 2024 (2) Karen Kopitzke, Pat Curtner

Equipment Manager (2) Jude Edling

Faculty (3) Theresa Miedema, Maureen Ohland

Judged Exhibit (2) Sarah Parker, Kate Eelkema

Learning Stage (2)

Marketing (2) Mea Clift, Tina Rohde

Merchandise (2) Louise Somers, Carrie Carlson

Non-Judged Exhibit (2) Wanda Shelton, Diane Rose

Photography (2) Linda Huntzicker

Quilt Auction (2) Elizabeth Murray

Quilt Entry Logistics (1) Sue Rufford

Quilting for Others (2) Diane Rose, Merle Pratt

Raffle Managers (2) Dorothy Sand

Signage (2) Mary Ann Baraibar, Rita Culshaw

Special Exhibits (2) Laura Nagel, Adrienne Lemberg

Vendors (2) Char Wenger, Jeanne LaMoore

Volunteers (2) Laurie Klinkhammer, Joseph Muehlbauer

Website (2) Karen Rainford

Youth Exhibit (2) Lisa Stene, Paulette Marini



MINNESOTA QUILTERS, INC.™

253 State Street
St Paul, MN 55107-1612

MQ News is the monthly newsletter for members of Minnesota Quilters, Inc.™, a nonprofit organization formed to find and unite quilters and quilt enthusiasts throughout the state of Minnesota and elsewhere. MQ News is published twelve times a year by Minnesota Quilters, Inc.™

The views expressed herein are not necessarily those of Minnesota Quilters, Inc.™ Although every effort has been made to provide timely and accurate information, Minnesota Quilters, Inc.™ shall have no liability to any person or entity with respect to liability, loss, or damage caused or alleged to be caused directly or indirectly by the information contained in this newsletter. This publication is intended to provide generalized information only and not to render professional advice. No part of this publication may be reproduced, stored in a retrieval system or transmitted in any form or by any means, electronic, mechanical, photocopying, recording or otherwise without prior written permission of Minnesota Quilters, Inc.™ © 2023. All rights reserved. *Deadline for submissions is the first of the month for the following month. Ads and articles may be sent to Minnesota Quilters, Inc.™ Editor, 253 State Street, St Paul, MN 55107-1612, or e-mail editor@mnquilt.org*

The mission of Minnesota Quilters, Inc. is to nurture the art and craft of quilting through inspiration and education, to support our communities through our craft, and to honor our quilting heritage.
Established April, 1978.

For a printable form from our website go to: <http://www.mnquilt.org/documents/PaperMembershipForm.pdf>



Minnesota Quilters, Inc.™ Membership Form

Member Information:	Payment Information:
Member name, or gift recipient's name (please print):	This membership is: New Renewing Gift
Address:	I would like to make an additional donation of \$
City: State: Zip:	Check Cash Visa MasterCard Discover
Home and/or cell phone:	Credit Card No:
Email: (needed to send you your newsletter and other MQ announcements)	Expire date: CVV2 3 digit code on back:
Membership Levels: Circle one. (all levels include free entry into general membership)	Name on credit card (please print):
\$45 Regular Access to all website features. Receive newsletter via email. Early registration for annual show. Textile Center Library privileges.	Phone:
\$20 Student Full time student. Access to all website features. Receive newsletter via email. Early registration for annual show. Textile Center Library privileges.	Signature:
\$75 Business Quilt-related business. Access to all website features. Link to your website. Receive newsletter via email. Textile Center Library Privileges.	I would like my newsletter: (check one) _____ Emailed to me in full color (Free!) or _____ Mailed to me in black and white for an additional \$20 per year.
\$20 Newsletter Postal Mailed Add to your dues price. Dues are not refundable.	

Please mail your completed form and payment to: Minnesota Quilters, Inc.™, 253 State Street, St Paul MN 55107 For questions call 651-224-3572