

Minnesota Quilters Meetings

Thursday, April 13, at 7 p.m. on Zoom

Saturday, April 15, 10 am in person and on Zoom

Bonnie Lundorff—Piecing and Working with Wool and Wool Crazy Quilting Workshop

**Liz McHenry, Laura Nagel, ed@mnquilt.org
Education Co-directors**

Bonnie Lundorff will show us how fun and easy it is to work with wool as she shares a trunk show of her many original designs. She will be sharing her special tips and tricks as she displays her creations.

Bonnie began her quilting journey 35 years ago when, as a young mother, she began designing small framed quilts that she sold in gift shops and galleries.

Twenty-six years ago she opened Willow Wood Market, a quilt shop and wool studio that is located just south of Bemidji. Her goal is to instill a love of stitching and quilting in her customers. She designs easy-to-create patterns for wool and cotton. She vends and teaches at quilt shows across the upper Midwest. Her designs have also been featured in national magazines.



Bonnie lives in rural Bemidji with her husband Tim. They have three grown daughters and five beautiful grandchildren.

Join Bonnie Saturday afternoon as she teaches a workshop and learn just how easy crazy quilt piecing with wool is to do. You will create a sweet little bouquet of flowers.



Thursday, April 13, via Zoom. Presentation: Piecing and Working with Wool
<https://us02web.zoom.us/join/mtE9G-txagWvVfROVjwtpONUjU>
Saturday, April 15, in person Trunk Show and Presentation at MQ (followed by Wool Crazy Quilting workshop, 1 to 4 p.m. at MQ). Register for Zoom presentation here:
https://us02web.zoom.us/join/tZYtduvvrjkrGtPMJcNW1YW6ngYeQ2bcl_fi

After registering, you will receive a confirmation email containing information about joining the meeting.

Register for Bonnie's workshop here: <https://cvent.me/edx8w>

Bonnie's website is <https://www.willowwoodmarketdesigns.com/page/page/4237891.htm>

Upcoming Class with Robin Long Strip Pieced Mariner's Compass Basics A Zoom Workshop Sunday, April 30, 11:30 a.m. to 5:30 p.m.

If you are not a fan of paper piecing or using tedious templates, then you will love this class for learning how to make 16-point compass blocks in 16 different sizes using Robin Ruth Design's rulers and strip-piecing method. Register here: <https://cvent.me/rQdvz2>

**Liz McHenry, Laura Nagel
ed@mnquilt.org**



The Minnesota Quilt Show

June 15 - 17, 2023

River's Edge Convention Center, St. Cloud

www.mnquilt.org/mq2023

Show Registration Deadlines

April 18 at 2 p.m. is the deadline for entering quilts in Judged, Non-Judged, Challenge and Youth categories.

By May 5 quilt entry information will have been mailed to entrants.

June 2 is the final day for Advanced Registration.

The next **Minnesota Quilters Day Retreat** will be Thursday through Saturday, May 11 to 13. Details are coming soon.

Board of Directors
Oct 1 2022 - Sept 30 2023

President

Wynn Martin
president@mnquilt.org

Past President

Mary Tague
pastpres@mnquilt.org

President-Elect

(Open)
preselect@mnquilt.org

Treasurer

Marcy Huggins
treasurer@mnquilt.org

Secretary

Colleen Backus
secretary@mnquilt.org

Communications Co-Directors

Pat Curtner, Karen Kopitzke
comm@mnquilt.org

Education Co-Directors

Liz McHenry, Laura Nagel
ed@mnquilt.org

Membership Co-Directors

Jan Schmidt, Mea Clift
membership@mnquilt.org

Operations Co-Directors

Reo Pratt, Kathie Simon
Frank
ops@mnquilt.org

Editor

Wanda Shelton
editor@mnquilt.org

MN Quilt Project Chair

Carolyn Silflow
mqp@mnquilt.org

MQ 2023 Quilt Show

Coordinators

Rose Allen, Yvonne Curran
mq2023@mnquilt.org

Employees

Show Director

Brenda Lyseng
showdirector@mnquilt.org

Bookkeeper

Amy Fennwald
bookkeeper@mnquilt.org

Office Manager

Debra Svedberg
quilter@mnquilt.org

Hard copies of the newsletter will be available for an additional \$20 at the time of membership renewal. This charge is to cover the cost of printing and postage. Cash and checks welcome.

Upcoming Events

Wednesdays, Quilting for Others, 11 am to 1 pm, pick up supplies and drop off finished work at Recovery Church, fourth Wednesday is a work day for QFO

March 31, Quilters Mosaic, special event with Mary Kerr

April 1, Show Committee Venue Walk-Through, St. Cloud RECC, 10 am

April 3, 10, 17, and 24, Quilting Together via Zoom days, 10 am to 4 pm, links on page 6

April 13, Executive Committee Meeting, 10 am on Zoom

April 13 and 15, Member Meetings, 7 pm Thursday on Zoom, 10 am Saturday in person and on Zoom with workshop following in person 1 to 4 pm

April 18, FLAP meeting, 1 pm

April 20, Finance Meeting, 2 pm on Zoom

April 25, Board Meeting, 6:30 pm on Zoom

April 26, QFO work day, 10 am to 2 pm, Recovery Church

April 27, Executive Committee Meeting, 10 am on Zoom

April 30, Workshop with Robin Long, 11:30 am to 5:30 pm on Zoom

May 4, Member Meeting, Japanese Yakuta Quilts, 7 pm

May 6, Garage sale, 10 am to 3 pm

June 15 - 17, 2023, The Minnesota Quilt Show, River's Edge Convention Center, St. Cloud, Minnesota

More calendar information on the MQ website <http://www.mnquilt.org/.html>

Directions and a map to MQ are shown at <http://www.mnquilt.org/location.html>

DEADLINE for May Newsletter: Tuesday, April 18. Send newsletter articles and photos to editor@mnquilt.org. *Later submissions may be saved for the following month's newsletter.* The newsletter deadline is normally the Tuesday after the Saturday meeting. Send Show and Tell photos to showandtell@mnquilt.org. Include descriptions if you wish.

COVID-19 Guidelines for MQ meetings:

Minnesota Quilters, Inc. considers the health and safety of all our members, staff and guests to be our top priority. Our COVID policy is to follow guidance by city, state, and CDC. CDC Currently advises following guidelines by county, using the information at the link at the bottom of this notice.

At this time, COVID community levels for all counties in the Twin Cities Metro area are designated as low, and therefore, we recommend our members and visitors stay up to date with COVID-19 vaccines and get tested if they have symptoms. At this risk level, masks are optional. People may choose to mask at any time. People with symptoms, a positive test, or exposure to someone with COVID-19 should wear a mask. We will continue to monitor the county data published by the CDC in making ongoing determinations. If you have questions, CDC info can be found at the link below. <https://www.cdc.gov/coronavirus/2019-ncov/your-health/covid-by-county.html>

Thank you for your patience in this ever-changing environment.

Mission Statement (Our Purpose)

The mission of Minnesota Quilters, Inc. is to nurture the art and craft of quilting through inspiration and education, to support our communities through our craft, and to honor our quilting heritage.

Vision and Value Statements <https://mnquilt.org/aboutmq.html>

SignUpGenius: <http://www.signupgenius.com/go/minnesotaquiltersinc>

MQ needs your help. Please click on this link to see what help we need. Please take a look at the Show Volunteer needs to see if you are able to help.

The site lists volunteer opportunities. Save the link for additional ways to participate in MQ activities and volunteer often and in any capacity that you can.

Quilter's Mosaic, Quilting Old Into Art with Mary Kerr

On March 31, Quilter's Mosaic featured Mary Kerr, an award winning quilter, teacher, speaker and author. Her 30-plus year career brought a depth of knowledge and inspiration to the quilting community. She shared ideas on working vintage textiles into new compositions honoring the past and present trends. During "Quilting Old Into Art," she shared quilts from her collections to illustrate expanding your quilting skill set to create an original design. Mary recently published *The Art of Make Do Quilting* in which she details working with vintage textiles.

This was a virtual presentation. If you registered but were unable to view the presentation live, your registration allows you to view the lecture on Friday, March 31, or Tuesday and Wednesday, April 4 and 5, depending on your schedule. Expect e-mail details after the presentation.



What's happening? President's Letter

Wynn Martin, President, president@mnquilt.org

At the beginning of March I was feeling a bit down. No specific reason, just minor stuff. You know how it is. In the past week I'd been in touch with a few members, and they had suggestions about what we could do to make MQ a better organization, and the ideas were good, and I wanted to see the changes, but I knew the answer would likely be "yes but..." It's a bandwidth issue. We want to see positive change, but every change requires legwork and time and possibly a bit of money.

So, there I was, Saturday morning, at the MQ meeting in March. The first bit of happiness was walking in and seeing Dawn Ronnigen's quilts. I saw the quilts on Thursday night via Zoom, but I was reminded about the fun of seeing a quilt in person. On screen, every quilt is the same size but in real life, you see the differences in scale. It was fantastic and I was so happy to have that experience.

Then Mary Ann Baraibar got up to talk about her desire to provide member access to an AccuQuilt Cutter. As she explained, the easiest option is to contact your local public library and ask if they offer crafting supplies on loan. Some of them do, so it's worthwhile to check it out. The second option is Textile Center, and the third option is to volunteer to coordinate fund-raising and volunteer time to make the AccuQuilt Cutter available at MQ. Call Mary Ann if you want to help.

I also spoke with Dee Legvold about our desire to have small groups at MQ where you can meet with anyone who shares a particular focus, such as vintage quilts, or paper piecing or applique. Once again, it takes at least one person to step forward on each activity. Dee stepped up to announce the formation of a small group that will alternate between applique and English paper piecing. I can't wait to hear more as this small group takes shape. Do you have a small group that you want to start? It doesn't matter where you live, just reach out to those near you and schedule a meet-up.

March was the second month for the "go to lunch" meet up. If you want to meet new friends, simply join us for lunch after the Saturday meeting. I went to lunch with Wanda Shelton, Paulette Marini, Ann Sommers, and Candice Clemmons. It was so much fun. That's all it took – one MQ meeting, a few volunteers and a great lunch with friends (old and new). I feel so much better!

PS: Thanks to a good friend who gave me a hug just cuz she knew I needed one. See you next month.

Minnesota Quilters Garage Sale Save the Date and Start Spring Cleaning

Liz McHenry, Laura Nagel, ed@mnquilt.org

Saturday, May 6, 10 a.m. until 2 p.m. (Clearance sale from 2 to 3 p.m.)

That's right, I'm advocating for a quilt studio decluttering – even if it frees up only a little room for your new purchases at the MQ show in June. In place of a meeting or program for the Saturday meeting time in May, we will have tables full of fabric, patterns, notions, tools, UFO's, and maybe even some furnishings and machines. We don't know what goodies you have hidden in your closets and are eager to part with.

Minnesota Quilters, MQ Merchandise, MQP and QFO will all have tables. If you would like your own eight-foot banquet table space, contact Laura Nagel at ed@mnquilt.org to reserve a spot. The fee is \$20, payable on the day of the sale.

Donations can be dropped off at the MQ office beginning Wednesday, May 3, through Friday, May 5, from 11 a.m. until 1 p.m. We are seeking quilting fabrics, notions, machines, batting, patterns and books. Fabric needs to be usable and clean. Pieces over one yard should be measured, with the a note of the amount attached with a safety pin; Post-It notes fall off. MQ will sell donated fabrics by the pound. No magazines or hand-quilting frames will be accepted.

Volunteers are needed for drop off days and on the day of sale from 9 a.m. until 4 p.m. If you can lend a hand, please contact volunteer@mnquilt.org.

On sale day there will be a \$5 bag clearance sale from 2 to 3 p.m.

Quilting for Others

Diane Rose, Merle Pratt, qfo@mnquilt.org

From time to time I like to check in with the organizations where we donate our quilts to make sure we are meeting their needs. When chatting with Terri from Minnesota Visiting Nurses Association, she mentioned there must be a baby boom as they are hardly keeping up with their goal of donating a quilt to each newborn they visit. She is always very appreciative of what we donate to MVNA and hates to ask for more. I told her it was no problem. The generous quilters of MQ love to make quilts and especially love to make baby quilts. QFO has loads of quilt tops, many of them are already matched with batting and backing. All they need is the last touch of magic that transforms layers of fabric and batting into a quilt: the quilting.

I often hear "Oh, I can't do that!" I like to think that QFO offers quilters a chance to grow and try something new. We are happy to walk you through the steps of basting, simple line quilting, and sewing bindings by machine. Think about it.

We are continuing to try to have a work day the fourth Wednesday of every month (when we don't get snowed out). We meet at Recovery Church from 10 a.m. until 2 p.m. Bring your machine if you want to sew, or plan to do some cutting. We provide all supplies. So bring a friend and your lunch and we will see you then. Next work day is April 26.



Volunteer Recognition Drawing Resumes

Jan Schmidt, membership@mnquilt.org

It has been a long time since we have had a drawing at a monthly meeting to recognize the contributions of our volunteers. Beginning with the Saturday meeting in April, we will have a basket and slips of paper for your name and how many hours you volunteered and in what capacity you did so.

Many groups in the organization already collect volunteer hours. We will not duplicate those efforts. If you have volunteered and did not report your hours, we will keep track of those hours. We appreciate our many volunteers – from holders and folders, photographers at the meetings for show and tell, the many contributions of quilting for others, the show committee, the board of directors, MQP, etc.

Our organization values its many volunteers. Thank you.

Bulletin Board

Through July 1, 2023, **MAAHMG, the Minnesota African American Heritage Museum and Gallery**, Community Quilt Project exhibits 14 quilts expressing Black history, Black joy, love, family, racial justice, civil rights, Black liberation, gun violence, healing, and Juneteenth – freedom. There is also a quilt honoring Prince created during painting of the Prince mural. 1256 Penn Avenue N., Minneapolis. Tuesdays – Fridays 1 pm to 5 pm, Saturdays 10 am to 2 pm. Free admission. Contact Tina Burnside, Info@maahmg.org

April 17, Northern Material Quilt Guild, Mike Ellingsen from Decorah, Iowa, presents his quilts. North Presbyterian Church, 2675 Highway 36 E., North St. Paul. 7 p.m. \$5.00 guest fee or you are welcome to join the guild.

April 17 - 21, **Textile Center, Pat Pauly's Design Camp** workshop, registration closes April 10 <https://textilecentermn.org/product/gta-pat-pauly-april2023/> April 20, Pat Pauly's One, Two, Many lecture, 5 p.m. <https://secure.givelively.org/event/textile-center-of-minnesota/art-speaks/art-speaks-one-two-many-with-pat-pauly>

If you know of a quilt show or other quilting event scheduled in the next six months, e-mail details to editor@mnquilt.org. Include the event name, the organization producing it, dates, address, admission, contact and other details.

A Quilter's Story—Pat Blazick-Peterson

Mitzi Wicklund, mqp@mnquilt.org

Pat, like a lot of quilters, learned to sew in 7th or 8th grade Home Economics. Her mother sewed, making Pat's clothing. However, Pat is the first in her family to quilt. Her adventure in the world of quilting began when she was in college creating an independent study class for her Art Education and Coaching degrees, subsequently teaching herself how to piece and quilt.

In the 70's when Pat began her independent study, all quilting patterns were traditional. She made her own templates, used a pencil to trace the template onto fabric, cut out the shape and sewed approximately 20 different patterns together by hand in small hot pad style quilts for her class. Of course, she earned an A. As a student, her funds for fabric were scarce so both backs and fronts of the small quilts were pieced. When she graduated from college, her independent study quilting class fed her desire to continue quilting. She found Gladys Raschka's shop and took a Drunkard's Path class from Pat Cox.

Now she loves to select a pattern and totally redesign it to her taste. She emphasizes how important accurate cutting and piecing are. Pat loves medallion quilts but did have an Amish quilt period liking the dark colors. She took inspiration from a stained-glass church window for the ones she made. Pat's proudest achievement, however, is an applique basket quilt she completed and donated to Methodist Hospital after a personal health crisis in the early 80's. To her delight, it is still on display within the hospital.

In 2017 after having had kids and a career Pat retired. She knew life was going to change moving into their seasonal northern Minnesota lake home for summers and purchasing a winter home in Tucson, Arizona. She went through her sewing accumulation as she packed for the transition and gave everything (except the double wedding ring quilt she started when she was getting married) to a former student who wanted to sew. Pat was positive she wouldn't be sewing or quilting any longer.

Surprise! The community Pat and her husband moved to in Tucson has a vibrant, prolific quilting club. She began attending and said she'd press for the group. Eventually she was told she needed to participate in the next project which was a wonky log cabin. She stated that the new terms, tools and techniques she needed to get used to were like learning a foreign language. Luckily, the club had a group sewing machine she could borrow as she jumped back into the changed yet familiar quilting world. Soon she bought a machine and now is the owner of several. Pat began taking classes to relearn techniques. She tried Celtic and Hawaiian quilting as well as needle-turn applique. Her love of McTavishing inspired her with a project from a Holly Ann Knight String and Story class she took. She is a prolific piecer and loves that she can make smaller projects, having realized that not everything needs to be bed size.

Pat still has a friend she met at a Minnesota Quilters fall getaway about 50 years ago. She loves the camaraderie and self-expression of quilting. She reflects that at one time in her life, her love of quilting kept her from working full-time. She did however return to full-time employment as an art teacher and coach.

Pat is a prolific quilter who encourages others in their quilting. She is as at home in the desert as she is at her Minnesota lake home sharing her talents and inspiring others to quilt.



Show and Tell Photo Collecting

Jude Edling, showandtell@mnquilt.org

We love to see your quilts at the meetings on Zoom or in person. Please share a photo of your quilts, your name and names of anyone who worked on the quilt, the quilt's size and any information you'd like to briefly share. Send it to showandtell@mnquilt.org to be included in a PowerPoint presentation during the meeting. Every quilt has a story. Please tell us a bit about your quilts.

March Meeting Highlights

Laura Nagel, Liz McHenry, Carolyn Silflow
ed@mnquilt.org, mqp@mnquilt.org

Charming is certainly the word for our March programs sponsored by Minnesota Quilt Project. Dawn Cook Ronnigen delighted the membership with her in-depth knowledge of antique to modern charm quilts and the who, what, where, when and why of the style which arose during Victorian times when collecting was a popular hobby. Quilters bought or traded for the hundreds or even thousands of unique prints that they included in a charm quilt.

A trunk show of charm quilts from Dawn's collection was beautifully photographed for our Zoom audience and was even more impressive at Saturday's in-person meeting. Still, no touching, but a very close inspection of fabrics and construction techniques was possible. Dawn answered several questions and went into more detail about fabrics from that period in her quilt study workshop immediately following the meeting. It gave students the opportunity to examine her charm quilts and tops in detail. After an introduction to resources and tools for quilt study, students looked for the variety of print patterns and colors that were typical of the latter half of the 19th century to the early 20th century time period.

For another opportunity to meet Dawn and see quilts from her collection, she is offering a quilt study session about Medallion quilts at the show. Thank you, Dawn, and MQP, for providing us with such an informative presentation.

As announced at Thursday's meeting, we will no longer be taking a break during the meeting as viewers have the freedom to mute and pause video to take care of any necessary tasks. Thanks to Loretta Stone for providing coffee and refreshments during our Saturday break.

Announcements included show information about sponsoring a front-row table at the banquet, purchasing exotic masks for the Masquerade Banquet, and additional volunteer opportunities. Education is especially looking for a few people to learn the 'Owl' technology for meetings. Training is provided, and it really is just a back-up time commitment in case one of our regular tech crew is not available. Please contact Laura or Liz at ed@mnquilt.org if you are interested or need more information for this opportunity.



Quilting Together on Zoom in March

Devote every Monday in April to quilting. Refuse other invitations and requests by saying, "Sorry, I have a Zoom today." Use the sewing time to finish your entries for the show, or to make other projects, or even to organize your quilting space. Enjoy a retreat day and the companionship of quilters without needing to pack your machine, projects and tools. Sew from your familiar work space at home and let your stash be your 'free table.' The regular attendees will welcome you and hope you become a new regular.

April 3, 10 a.m. to 4 p.m.

<https://us02web.zoom.us/j/87388081568?pwd=Y000clFmdmU0SEROBHV0I2RIIDdz09>

Meeting ID 873 8808 1568, passcode 082150

April 10, 10 a.m. to 4 p.m.

<https://us02web.zoom.us/j/89053743413?pwd=RHpBQnhhcFoyZ2VJMy9mK25zaHNUUT09>

Meeting ID 890 5374 3413, passcode 378148

April 17, 10 a.m. to 4 p.m.

<https://us02web.zoom.us/j/81019296346?pwd=MmtQTVo5K1llc1BXcFFUMGdmL2dOUT09>

Meeting ID 810 1929 6346, passcode 060062

April 24, 10 a.m. to 4 p.m.

<https://us02web.zoom.us/j/82747265102?pwd=eUQvakhJUDNLSTdYV3JMR2JHbDhLUT09>

Meeting ID 827 4726 5102, passcode 986969

MQ Board Meetings

Board@mnquilt.org

Did you know that any member can attend the monthly board meeting? Please call a board member if you want to participate, but anyone can attend. It's scheduled for the fourth Tuesday of the month at 6:30 p.m. From the bylaws:

Section 6. Regular Meeting. The regular meeting of the Board shall be held at such time and place as the Directors shall determine. Notice to the Directors and the general membership of the Corporation of such meeting shall be in the newsletter, and it shall be the responsibility of each Board Member to attend. All regular meetings shall be open to the general membership.

Please send a request to the office or a board member if you wish to attend and we'll provide a link to Zoom.



The Minnesota Quilt Show

June 15 - 17, 2023

River's Edge Convention Center, St. Cloud

www.mnquilt.org/mq2023

The Minnesota Quilt Show Invitation to the Show

Brenda Lyseng
showdirector@mnquilt.org

There are various phases to quilt show planning, and we are now deep in the marketing phase. Our main audience for the show is quilters, and so we are advertising where you find quilters: quilt shops and shop hops. More than 450 packets have been delivered to quilt shops in the five-state area. The packets include an invitation for the quilt shop to be involved in our show in a number of ways, plus brochures to give to their customers.

If you bought the All Minnesota Shop Hop magazine, you couldn't miss our full-page ad right in the center. We will also be in the All Iowa Shop Hop magazine. Our show is also listed on various quilt show websites and listings and, of course, we have our own Facebook page. Did you know that Minnesota Quilters is an underwriter for quilt-related programming on PBS?

Many of you are also members of local quilt guilds. Have you thought about sharing information with them? We are available to give a short presentation at your next meeting. Wouldn't it be fun to choose a day of the show to attend together and wear a fun hat or shirt to identify yourselves? A chartered bus would also be fun. A handful of guilds that have done that.

Our show is also aimed for the general public, especially those that appreciate the arts. We have a full page story in the St. Cloud Visitor's magazine which is available throughout the state at rest stops and hotels. We will have radio spots in the central Minnesota area. Ads will also be appearing in local papers. The show committee is working on some fun ideas.

But do you know what I think is the most effective marketing tool we have? You! Inviting a friend to come to the show with you or buying them an admission ticket can be so effective. I have some friends who quilt or sew but aren't members of MQ. I haven't been able to connect with them much since the pandemic, and this is a perfect opportunity to do that. My kids will also be getting tickets from Mom. Then there is the group at church that meets to make quilts – wouldn't the show be a fun outing for them? So what are you waiting for? Share the website www.mnquilt.org/mq2023, buy some admission tickets (call 651-224-3572), or even charter a bus bustours@mnquilt.org.

Getting Ready for The Minnesota Quilt Show

Rose Allen, Yvonne Curran
showcoordinator@mnquilt.org

It's April. Have you entered your quilts yet? The deadline for Judged, Non-Judged, Mystery, Youth and Challenge quilt entries is Tuesday, April 18, at 2 p.m. Don't miss the boat – we need to see your quilts at the show in June. If you need help with the entry process, Sue Rutford at quiltentryhelp@mnquilt.org is available.

One of the great parts of going to a quilt show is connecting with friends – perhaps someone you haven't seen in a while. This year we are providing a "Sewcial Lounge" for attendees. It will offer a place to gather, and there will be some learning opportunities. You can come to work on a project you started in a class. Hours, location and activities will be listed in the show guide.

Is your guild looking for new members or does it want a chance to display your work and community activities? Sign up for a time in our Connect Booth. Contact us at showcoordinator@mnquilt.org to set up a time for your guild to have a presence at the show.

We are also considering offering member demonstrations on the Learning Stage. If you have a short demo showing a quilting tip or a handy "how to," contact showcoordinator@mnquilt.org with your idea. The stage will have a projector and a document camera so you can use PowerPoint or show a hands-on method. This is perfect for anyone who has presented at Schoolhouse programs in the past. Come and share your tips and tricks at The Minnesota Quilt Show.

Minnesota Quilt Corner

Carolyn Silflow, mqp@mnquilt.org

Twenty adorable strawberry applique blocks were donated to the Minnesota Quilt Project for sale at the MQP auction at The Minnesota Quilt Show in June. You could make these beautifully stitched vintage blocks the basis of a quilt for a lucky young person. You are invited to stop by the MQP booth at the show to see and bid on these and many other vintage quilts, tops, blocks and other quilt-related items.

On the other hand, you may have quilt-related items you no longer need. The MQP group would welcome donated items for the auction. All proceeds are used to promote education and outreach activities of MQ. If you have items to donate, please contact mqp@mnquilt.org or call the MQ office.



Promote your Local Quilt Guild

Rose Allen, Yvonne Curran, showcoordinator@mnquilt.org

A goal of The Minnesota Quilt Show is to bring people together. Last year for the first time, quilt guilds were invited to participate in our Connect Booth highlighting their activities. Because this went so very well, we are again having the Connect Booth. These guilds have already signed up:

Ladies of the Lake
St. Cloud Heritage Quilters
Lakeshore Quilters
Chaska Quilt Club
Fargo Moorhead Quilters
South Minneapolis Quilters
Maple Grove Quilters
Quilt Dreamers Quilters
Deep Valley Quilters
Quilts For Kids - Thursday, Friday and Saturday all day
...and more to come

If your guild would like to participate, send a message to showcoordinator@mnquilt.org. When you are at the show, stop by the tables to meet the guild members who are there. Some guilds will be selling tickets for their raffle quilts.

Quilting for Others at the Show

Merle Pratt, Diane Rose, showqfo@mnquilt.org

We will have a lot of activities planned in the Quilting for Others area at the show this year. We will be in the Town Square area, but this year it may be located nearer the Learning Stage. Here is what will be happening:

- ♥ Collecting placemats for Meals on Wheels and Catholic Charities
- ♥ Sewing heartstring blocks
- ♥ Sewing blocks for our new quilt which includes both nine-patch and split rail blocks
- ♥ New this year is that each day we will have a jelly roll race. Bring a friend (or we can help find a new friend for you), come by the Quilting for Others area and sign up to participate in the race to make a quilt top using a jelly roll. We will have everything you need, and there are prizes.
- ♥ The machines at Quilting for Others are provided by various dealers and are for sale at a great price. Come and try them out if you are planning to purchase a new machine.
- ♥ When you spend some time sewing with us, you will receive a chance to win fun prizes in a drawing.
- ♥ Return often to check the progress of the quilts being made every day at the show. Look for the blocks you made.

Whether you have tired feet and need a rest, or you want to sew with friends, or you want to test new machines, or you want to be a part of giving quilts to others, Quilting for Others is a great place to include in your quilt show plans. Be a part of the community that Quilts for Others.

Garden Tour, Thursday, June 15, 7 p.m., \$15 per person

Munsinger Gardens and Clemens Gardens are two distinct but adjacent gardens on the banks of the Mississippi River in St. Cloud, Minnesota. From the show, you can enjoy a coach bus ride to the Munsinger and Clemens Gardens. Bring your friends. There is no limit to the number of tickets you can buy. Just modify your show registration to order the number of tickets you need. This is a good time to be with your friends and to make new friends.

Munsinger Gardens are informal with winding flower-bordered paths under tall pines. The gardens date from 1915 when the city purchased the site of a former sawmill as a park. The gardens themselves were constructed primarily in the 1930s by the Works Progress Administration. Projects from this period included planting trees and flower beds, building rock-lined paths, a lily pond and a fountain. The first greenhouse was built in 1938; it has subsequently been replaced. The gardens were refurbished and expanded in the 1980s.

The Clemens Gardens were developed primarily in the 1990s by Bill and Virginia Clemens, who then donated them to the City of St. Cloud. They include six gardens in a formal European style with American plantings and fountains:

Formal Garden	Perennial Garden
Trellage Garden	Virginia Clemens Rose Garden
Rest Area Garden	White Garden





The Minnesota Quilt Show Masquerade Banquet ... at Best Western Plus Kelly Inn, St. Cloud

Terri Kryson, Jean Carr
banquet@mnquilt.org

For this year The Minnesota Quilt Show Masquerade Banquet is coming together as a night you will forever remember.....full of excitement with an edge of mystery and a lot of quilting frivolity. The Masquerade Banquet holds surprises for all your senses as you immerse yourself in the wonders of “All things Susan Cleveland.” Honored as the Minnesota Quilter of the Year in 2010, Susan Cleveland has won the big awards and traveled the world inspiring students with her techniques and bestowing her highest award to all of her Piping Hotties. Every class, every lecture and every encounter with Susan reveals the enthusiasm to believe you can sprinkle a little Susan

magic into your work to raise it to the next level. Embrace the opportunity to steal an hour with Susan over dinner at our Masquerade Banquet and slip away with ideas and new possibilities racing through your imagination.

What can you do to be part of the fun?

- 1 Sign-up for this year's Masquerade Banquet. Seating is limited.
- 2 Opportunity to purchase a table opened March 1. Primo Seating is available for \$50 (per table) for up to 10 friends who are registered for the banquet.
- 3 Mask Forms and Decorated Masks are available at the Merchandise table at MQ monthly Saturday meetings. Undecorated mask forms cost \$5 and decorated masks cost \$15. Start creating your one-of-a-kind mask to win.
- 4 Mask Categories will provide beautiful prize baskets to the winners
 - Most Outrageously Flamboyant
 - Most Colorfully Conceived
 - Most Beautifully Bedazzled
 - Most Panache with Precision and Points
 - Most per-SUEDED with Cherrywood
 - Most Regaled by the Quilting Police

The Minnesota Quilt Show Masquerade Banquet will be a magical night you won't want to miss. So, take a minute now to sign up and join in the upcoming fun. It will be epic!

NACQJ Judges

Kate Eelkema, Sarah Parker, judged@mnquilt.org

What is the NACQJ, and why is it partnering with the Minnesota Quilt Show?

Back in the 1970's, the National Quilting Association (NQA) established programs to certify quilting teachers and quilting judges in order to provide quality learning and judging experiences for quilt guilds and quilt shows.

When the NQA ceased to exist in 2015, the quilt judges who had been certified by the NQA formed their own organization – the National Association of Certified Quilt Judges (NACQJ) to continue the judging certification program.

What is the advantage of having certified judges? Hiring certified judges ensures that specific procedures are followed from show to show to provide objective yet consistent evaluation of quilt workmanship and design. As stated on the NACQJ website, “certified judges believe in fairness, objectivity, a positive approach, and a very broad and very deep knowledge of quilting techniques, color, design, and history. These qualities allow all quilt makers to receive a consistent, meaningful critique as well as recognition of skill and achievement for the ribbon winners.”

A person interested in becoming a certified quilt judge must submit extensive paperwork on judging problems and techniques which has to pass a panel of three certified judges. That is followed by an oral panel review and judging demonstration with another three certified judges. An essential certification requirement involves volunteering during the judging process of at least two quilt shows judged by certified judges. This used to happen at the annual NQA show, but after that organization folded, the NACQJ began to partner with quilt shows around the country to offer that important experience to quilt judging candidates.

The NACQJ partnered with Minnesota Quilters in 2017, and that was such a great experience that the organization was anxious to partner with MQ again in 2023. The Minnesota Quilt Show attracts amazing quilts, which makes it an excellent learning opportunity for judging candidates, plus the many different classes, lectures and special activities offered after the judging process is completed make it an exceptional show to attend.

Important Dates for Cancellation of Advanced Registration

March 18 through April 21: 50% of all fees for classes, lectures, and special events will be refunded. No refund of registration fee or membership purchases.

After April 21: No refunds unless cancellation insurance has been purchased. No refund of registration fee or membership purchases. If you bought cancellation insurance and need to cancel before 2 p.m. June 2, you will receive a full refund for classes, lectures and special events. If you cancel after then and before 11:59 p.m. June 13, you will receive a credit toward the next MQ event you register for. To cancel, you must contact the MQ office or staff@mnquilt.org.

It's time to enter your quilts in the Non-Judged exhibit which also includes any 2022 MQ mystery quilts you wish to enter. The deadline for entry is Tuesday, April 18, at 2 p.m. Please don't wait until the last day to enter. Minnesota Quilters members can enter one or two Non-Judged quilts at no charge as well as a 2022 MQ mystery quilt. The fee is \$15 for non-member entries.

What happens to your quilt along the way? How is it handled and stored? What can you do to make the process safer for your quilt and easier for the volunteers who will be working with it? Here's the story of a Non-Judged entry.

The journey of a Non-Judged quilt begins after the final stitch has been made in the binding, the label has been sewn to the back, and a sleeve has been sewn along the top edge. Find sleeve instructions at <https://www.mnquilt.org/documents/HangingSleeve.pdf>. Or scroll to the bottom of the mnquilt.org page, type the word sleeve into the search box and click Go. If the sleeve fabric contrasts with the backing fabric, it's easier for volunteers to quickly find the sleeve and insert the hanging rod.

The online entry process requests information about the maker and the quilt, including a photo of the quilt, and instructions as to where the quilt will be delivered and retrieved after the show. Detailed information is on the show website. From mnquilt.org, click on the Show tab, then on 2023 Show, and scroll to click on Enter Your Quilt in the Show. The page includes a Help button just in case you need it. Quilts do not need to be finished by the deadline, but they must be finished for the show.

Online entry ends on April 18, and committee volunteers become very busy organizing the data from all the entries. By early May the committee volunteers will mail an informational letter, a duplicate receipt and two tags to each entrant.

If you chose to deliver your quilt to a participating shop, then during the week of quilt drop-offs, you will carefully remove any loose threads or lint from the quilt, use a safety pin to attach one tag to the back of the quilt and fold it to fit into a cloth bag.

The ideal bag for your quilt would be:

- Large enough to comfortably hold the quilt
- Made of fabric easily recognized by you
- Have a closure, such as Velcro, safety pins, a zipper or a fabric tie attached to the bag
- Lined with slippery fabric for quick removal and repacking after the show.

If your bag is identical to others, such as the blue zippered bags that MQ sold years ago, make yours easy to identify by sewing a strip of colorful fabric around the gusset of the bag, not just by tying a scrap of yarn onto the strap. At quilt pickup time after the show closes you will easily see your unique bag in a stack of other blue bags.

Deliver the quilt in its bag, the other tag, the completed duplicate receipt and two safety pins to the shop you chose as the drop off location. A shop employee will sign the duplicate receipt. Keep one copy and pin the other copy to the outside of the bag; you need the saved copy to claim your quilt after the show. Do not expect the shop to provide their safety pins; bring your own. Last year several entries arrived with straight pins, and that was a dangerous hazard for volunteers as they unpacked and sorted quilts.

After quilt drop-off week the committee volunteers will drive to each shop and collect the quilts. They are taken to the Minnesota Quilters office to be packed into large blue IKEA bags with Non-Judged entries from the other shops. The quilts may also be sorted into categories: large, small, mystery and youth. Then all are taken to a secure off-site storage unit where they await being loaded on the truck for the drive to St. Cloud at the beginning of show week.

Some entrants chose to deliver their quilts to River's Edge Convention Center on Monday, and volunteers deliver them to the Non-Judged exhibit area.

In the weeks after quilt entry closed, the committee has drawn an exhibit layout and planned where each quilt will be hung. **On hanging day** the equipment, supplies, quilts and volunteers are gathered for a day of work. Volunteers consult the layout to deliver each quilt to its bay. Working in teams, they remove the quilt from its bag, verify that it is the correct quilt for the bay, insert the hanging rod into the sleeve, and use lanyards to adjust the height of the quilt. The bag is folded and placed on the floor by the quilt. Later the bags are collected bay by bay so they can be distributed in the same order for takedown at the end of the show. Volunteers then clip gallery cards of information by each entry.

During the show the quilts hang in their bays and listen to comments from the viewers. Many get their pictures taken again or have a volunteer show their beautiful backs. Some are awarded ribbons and money and get official photos taken for the slide show at the Friday night banquet.

When the show closes on Saturday, the bustle of takedown begins. It takes all day to hang the quilts but only a few hours to take down the exhibit. Volunteers deliver the bags to each bay, and they begin taking down the quilts. The first priority quilts are ones going back to shops which were vending at the show. Next priority are the quilts for people who are picking them up at the show, and finally volunteers pack the quilts which will be delivered to shops which are not at the show.

Continued on next page

The teams carefully lower each quilt, slide the hanging rod from the sleeve and fold the quilt. They pack the gallery card with the quilt and put it in the bag.

This is when **the ideal bag** is so appreciated. The volunteers do not have the luxury of slowly and carefully folding each quilt on a horizontal surface and measuring whether it should be folded in thirds or quarters to fit the bag. Instead, they are folding it in the air while hoping it'll slide easily into the bag and that they won't have to search inside the bag for a loose tie to close the bag.

When several quilts have been packed, a volunteer takes them to the pickup area outside the show floor. Which plain blue bag or white pillowcase was yours? Or can you easily identify it by fabric? Volunteers work as quickly as possible; they want to get the job done and head home, just as the entrants do. The RECC workers are quickly taking down the pipes and drapes that created the bays where the quilts hung, so we volunteers don't have time to go slowly, yet we must ensure that each quilt is packed in the correct bag and placed in the right location for pickup.

We thank you and appreciate your willingness to offer your quilts for the exhibit. Viewers enjoy seeing all of them. Only two quilts win the Viewer's Choice (large and small) awards, but many, many quilts get multiple votes from the viewers. Others win ribbons from faculty, show chairs, RECC security or even from the St. Cloud mayor. Please enter your quilts this year and make more for future quilt shows.

How else can you help?

When you understand the amount of work that goes into creating the entire show, or even the details of one small committee, you may want to participate by volunteering to make the workload smaller. Now is a good time to choose a committee and become acquainted with the duties involved. Shadow the current volunteers and know that written reports are available from each committee's work in past years. When planning begins for the show in Duluth, you will be confident that you can step into the role of a co-committee member and have the satisfaction of taking part in making The Minnesota Quilt Show the best it can be.

Consider Sponsoring a Charter Bus to The Minnesota Quilt Show

Kathie Simon Frank, Margaret Lundberg,
bustours@mnquilt.org

Charter Buses are a great way to come to The Minnesota Quilt Show

- + No Driving ~ Arrive Rested
- + No finding and paying for parking
- + Lots of Laughter and Networking
- + No Standing in Line
- + Discounted entrance fee
- + Snooze on the way home



Total number of people on the bus and admission payment must be completed by May 31. Perhaps your local guild, church or apartment would like to charter a bus. Charter buses should register online by going to www.mnquilt.org/mq2023.

Thursday and Friday

Admission per person

- fewer than 25 on the bus \$16
- 25-39 people \$14
- 40 people and more \$13

Saturday

Admission per person

- Up to 39 people \$12
- 40 people and more \$11

Youth Quilt Entries

Lisa Stene, Paulette Marini, youth@mnquilt.org

We invite all youth quilters and sewers, ages 18 and younger, to enter their quilts, large or small, in our upcoming quilt show. We appreciate your willingness to display your quilt projects in our show and to celebrate yourself and your accomplishments. Youth quilts are a source of pride for adult teachers and the youth students, creating a connection to pass on our love of fabric, sewing and community, while learning the skills of quilting.

We encourage all youth to attend the show and have their pictures taken standing next to their quilts. Then e-mail the photo to Debra at quilter@mnquilt.org. Your photo will be published in our monthly newsletter after the show. A full-color paper copy of the newsletter will be mailed to the registrant. All youth quilt entrants will receive a ribbon, and their names are entered into a drawing for a prize.

Faculty at the Show

Maureen Ohland, Theresa Miedema, faculty@mnquilt.org

We are seeing the effectiveness of Meet the Teachers (MTT) and the three YouTube videos in our enrollment numbers which are up 10% from last year. Viewings of our Minnesota Quilters channel have averaged 120 views since the beginning the MTT event. See them at https://www.youtube.com/results?search_query=minnesota+quilters.

Yet we are looking for more people to register for our Wednesday and Saturday workshops. Invite your friends, families and acquaintances to take a class with you to learn precision cutting and piecing, to make a beautiful bag, and to try new techniques for a quilt with modern flair. Purchase a lecture pass to hear about shibori stitching, appraisals, and so much more.

Cindy Erickson joins as a judge and will be teaching two classes with a focus on cutting and piecing with accuracy. The Mini Flying Goose is a 12" quilt created with many small pieces. Her Flying Goose class is a 12-inch block that is template-free and teaches the precision needed for a judged quilt. She will also be presenting a lecture/trunk show "Mad for Minis" which highlights all the tips and techniques for creating these little masterpieces.

Barb Walster is an experienced bag maker and will be teaching two classes. These are beautiful tote bags with multiple pockets and easy zippers. They can be completed by the end of each class. The bags are fun to make, and you will want to show off the results as you tour the show floor.

Linda Hahn is an exuberant teacher joining us for a week of classes. Her style is a bright, beachy and electrified foundation piecing done with just one pin. As well, she will be teaching how to use one block in a variety of colorways to create a quilt of extreme beauty. Her lecture "New York Beauty State of Mind" will highlight her quilting and publishing journey.

Faculty members have been sent their travel information and are all looking forward to The Minnesota Quilt Show. Let us fill their classes and lectures and have some fun.

MQ President's Invitational Quilts

Wynn Martin, president@mnquilt.org

Last year we asked members and show attendees to create twin-size quilts for Avivo Village, a remarkable collection of tiny homes sheltered within a larger warehouse space in Minneapolis. We set a goal of delivering one quilt for every bed in the village, and we expect to complete our promise during this year's show. Avivo is interested in twin-size quilts.

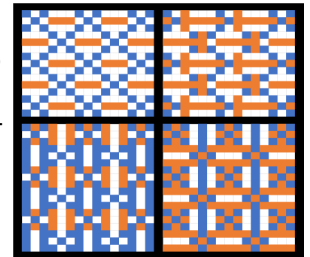
In addition, we are gathering quilts for another charity, yet to be named, in Baxter, Minnesota. Why Baxter? Because it's the home of Karla Overland, our 2023 Quilter of the Year. Perhaps you'll decide to add a bit of Cherrywood fabric to that charity quilt, but it's not required. Create a smaller quilt, lap-size or child-bed size.

Deliver your quilts to the Minnesota Quilters office by June 7, on Wednesdays only, between 10 a.m. and 4 p.m. Or bring your quilts to the volunteer desk at River's Edge Convention Center on Monday, June 12, or Tuesday, June 13, between 10 a.m. and 4 p.m.

Here are the details.

We're asking for two-block quilts, using no more than three colors. Ideally, we will see quilts that work well for both male and female recipients. If you can, find two blocks that create a secondary pattern when placed next to each other. For example, if you use a nine-patch block in combination with a three-rail block, you get secondary images that might look like the pictures of the nine-patch and split rail blocks. Which two blocks will you use to create a secondary design?

The recipient organization, Avivo Village, has been serving Minnesota since 1960. It specializes in helping individuals and their families who face complex barriers to success – poverty, homelessness, unemployment, chemical addiction or mental health concerns. Avivo helps nearly 15,000 people each year to achieve recovery, employment and economic advancement.



Special Exhibits Not to be Missed

Laura Nagel, Adrienne Lemberg
specialexhibits@mnquilt.org

Cherrywood Graffiti Challenge

Using the multicolor eight- fabric palette in the 2022 Cherrywood Challenge, participants were challenged to create their own 20" by 20" quilt using this graphic art form to represent themselves, their community, or the world around them. Minnesota Quilters, Inc. is proud to showcase the East collection which includes entries from many of our Minnesota quilters.



Storybook Quilts

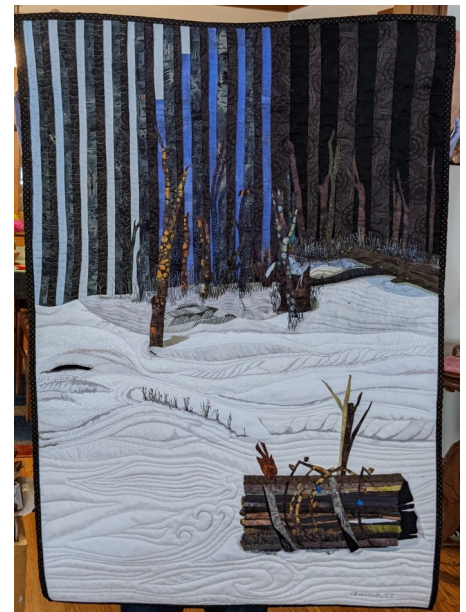
The prolific quilters of "Really Hard Quilts that Took a Long Time to Make" fame have been busy again. This year each one adopted a children's book about a quilt and rendered that quilt in cloth, making the story and characters come to life. Each quilt will be exhibited with the book it is based on, and a schedule of book readings will be posted for the enjoyment of young and old alike.

Cedar Creek Reserve

Cheri Stockinger spent 2019 as Artist in Residence at Cedar Creek Reserve and created a series of quilts depicting the unique story of the field station and Eleanor Lindeman, wife of the man who set the stage for modern ecology. Discover the history of how energy flows through aquatic ecosystems through the eyes and needle of a quilter. There will be a gallery walk as well as a lecture.

Poetic Imagery Materialized

Carol Hancuh has been busy stitching poetry into art. She has selected several poems that **invoked** an artistic image in her mind and has given them voice in her newest collection. This is an interactive exhibit. Not only will you view the quilts and read the poem, but by scanning a QR code, you will also be able to listen to the poem.



Helen Kelley Retrospective

It will be a privilege to admire once again the work of Minnesota's 2008 Quilters Hall of Fame recipient, Helen Kelley. Helen was a founding member of Minnesota Quilters and the 1998 Quilter of the Year – only a few of the many accolades bestowed on this internationally acclaimed quilter. On loan from family and personal collections, this is a rare opportunity to enjoy her imaginative and creative quilts. Few quilters have accomplished the body of work and had as much impact on the quilting community as Helen.



Charm Quilt Challenge

A sampling of vintage and recent charm quilts from personal collectors will complement MQP's booth display, including a Y2K quilt with 2,000 pieces.

Line

Minnesota Contemporary Quilters challenged themselves to Line. A simple concept. But is it? Edouard Manet says, "There are no lines in nature, only areas of color, one against another." Hmm. Is a line not a real thing but just an idea? A path between two points? Paul Klee says, "A line is a dot that went for a walk." How fun! Whether it is in line, over the line, the bottom line, a dance line or the party line, lines are everywhere in our language and ideas. Here's how quilters used the concept of line as their inspiration for stunning quilted creations.

Migrant's Alphabet

Inspired by a book from 1846 called "The Anti-Slavery Alphabet" of illuminated characters and accessible poetry, Bridgeport, Connecticut, artist Jane Davila started the Migrant's Alphabet project to bring awareness, education and conversation to the current crisis of migration in the United States and around the world. Leading mixed media and fiber artists from all over the U.S. created 12-inch square works of art for each letter of the Migrant's Alphabet, among them a number of first-generation immigrants. Using the technique of their choice, artists illustrated their assigned letters and wrote a short poem to accompany their work.



Additional Exhibits include quilts from A is for Applique, Minneapolis Modern Quilt Guild, and St. Cloud Heritage Quilters.



Luke Haynes

Believing quilts are sculptural objects that can be displayed both in gallery settings and out in the world, Luke has been creating public art quilt installations since 2013. He is a featured instructor at this year's show, so be surprised by his artistic expression and affirmation quilts, which have ignited an international response, #affirmationquilt.



THE Cutting Edge Quilt Shop

The Cutting Edge Quilt Shop (formerly Fabric, Fashion and More) in Rush City, MN.

*** New owner ***

Same location and creative and knowledgeable staff!

485 S. Dana Avenue ~ Rush City, MN 55069

320-358-3693 ~ Rush2quilt.com

Hospitality

**Sharon Lawrence
Kathy Loomis**

Now that we have in-person meetings again, it would be great if members would bring snacks for the Saturday meetings. Any foods such as cookies, bars, fruit, etc. are welcomed during the coffee break at the Saturday meetings. Thank you.

Conveniently located just one mile east of Interstate 35 – turn south just before the railroad tracks.



Business Members Please show your support for these businesses as their memberships support Minnesota Quilters. To see the web sites and e-mail addresses of our business members, go to mnquilt.org, click Members tab, then Business Members.

Bernina Pine Needles Quilt & Sew
1300 Salem Road SW Ste 350
Rochester MN 55902

Blue Ribbon Stitchin' LLC
4632 Tree Farm Road
Pequot Lakes MN 56472

Cabin Quilts
4779 126th St N
White Bear Lake MN 55110-5910

Dianne Pidde's Custom Quilting
1619 Lake Johanna Blvd
Arden Hills MN 55112-3668

Endless Quilting
556 W Annapolis St
Mendota Heights MN 55118-1001

Eye of the Beholder
2324 Carriage Dr
Milliken CO 80543

Flying Heart Quilting, LLC
6241 170th Ave NW
Anoka MN 55303

Just a Little Something
2617 Daybreak Ct SE
Rochester MN 55904

Lake House Crafts LLC
11037 Able St NE
Blaine MN 55434

Marie's Memory Quilts
6401 225th St W
Farmington MN 55024-9630

Momma Mo's Quilt Shop
2 Enterprise Ave NE Ste 1A
Isanti MN 55040

Monarch Retreat and Oasis LLC
39744 Hwy 58 Blvd
Goodhue MN 55027

Perkins Dry Goods
PO Box 386351
Bloomington MN 55438

Prairie Quilting LLC
11682 Mount Curve Rd
Eden Prairie MN 55347-2924

Quilting by Jill
5529 30th Ave S
Minneapolis MN 55417

The Quilting Page
1964 Rahncliff Ct #700
Eagan MN 55068

Rosie Girl Quilting
6025 Halifax Avenue N
Brooklyn Center MN 55429

Textilis Conservation
1481 Van Buren Ave
St Paul MN 55104

The Cutting Edge Quilt Shop
485 S Dana Ave PO Box 516
Rush City MN 55069

The Quilted Loon
2511 15th St N
St Cloud MN 56303

Valley Quilting
6639 County 18
Hokah MN 55941

Wishingwell Quilts
15742 Hershey Ct
Apple Valley MN 55124-7147

Woodland Ridge Retreat Dye Candy
PO Box 27
Downsville WI 54735-0027

Who's Who on the Show Committee The MQ members are producing The Minnesota Quilt Show for 2023. If you are interested in serving on a committee, this is an excellent time to contact current committee members. Have a front row seat to the action and be in a good position to co-chair a committee on the next show. New volunteers are welcomed and bring fresh ideas. Some committees have more work than others, but all are doable. Volunteering is a great way to meet members and support the guild. Please consider joining the ranks of show committee volunteers.

Show Director Brenda Lyseng - showdirector@mnquilt.org
Show Coordinators (2) Rose Allen, Yvonne Curran - showcoordinator@mnquilt.org
Admissions (2) Loretta Stone, Sharyn Resvick - admissions@mnquilt.org
Advanced Registration (2) Linda Wines, Mary Nelson - registration@mnquilt.org
Banquet (2) Jean Carr, Terri Krysan - banquet@mnquilt.org
Bus Tours (2) Kathie Simon Frank, Margaret Lundberg - bustours@mnquilt.org
Challenge 2023 & 2024 (2) Karen Kopitzke, Pat Curtner - challenge@mnquilt.org
Equipment Manager (2) Jude Edling - equipment@mnquilt.org
Faculty (3) Theresa Miedema, Maureen Ohland - faculty@mnquilt.org
Judged Exhibit (2) Sarah Parker, Kate Eelkema - judged@mnquilt.org
Marketing (2) Mea Clift, Tina Rohde - marketing@mnquilt.org
Merchandise (2) Louise Somers, Carrie Carlson - merchandise@mnquilt.org
Non-Judged Exhibit (2) Wanda Shelton, Diane Rose - nonjudged@mnquilt.org
Photography (2) Linda Huntzicker - photography@mnquilt.org
Quilt Auction (2) Elizabeth Murray - smallquiltauction@mnquilt.org
Quilt Entry Logistics (1) Sue Rufford - quiltentryhelp@mnquilt.org
Quilting for Others (2) Diane Rose, Merle Pratt - showqfo@mnquilt.org
Raffle Managers (2) Dorothy Sand - raffle@mnquilt.org
Signage (2) Mary Ann Baraibar, Rita Culshaw - signage@mnquilt.org
Special Exhibits (2) Laura Nagel, Adrienne Lemberg - specialexhibits@mnquilt.org
Vendors (2) Char Wenger, Jeanne LaMoore - vendors@mnquilt.org
Volunteers (2) Laurie Klinkhammer, Joseph Muehlbauer - showvolunteers@mnquilt.org
Website (2) Karen Rainford - showwebsite@mnquilt.org
Youth Exhibit (2) Lisa Stene, Paulette Marini - youth@mnquilt.org

Show and Tell Quilts Thank you to Carolyn Silflow for these photos from Saturday's in-person March meeting. For a presentation of show and tell quilts at the Thursday Zoom meetings, please send a photo and information about your quilt to showandtell@mnquilt.org. Jude Edling will create a PowerPoint presentation to showcase your work.



Dee Legvold



Faye Bodenhamer



Mary Ann Baraibar



Molly O'Dea



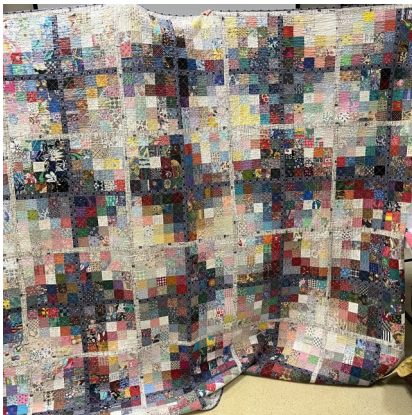
Mary Ann Baraibar—four quilts



Molly O'Dea



Laura Nagel



Mary Tague—quilt and details



Thank you to these 2023 sponsors of The Minnesota Quilt Show.

~ ~ Gold Sponsors ~ ~

BERNINA

made to create

www.bernina.com

Aurora, IL

St. Cloud Sewing Center

St. Cloud, MN

320-251-6540

www.stcloudsewingcenter.com

Pine Needles Quilt & Sew

Rochester, MN

507-226-8480

www.pnqs.net



Country Loft Quilt & Design –
Innova

Forest Lake, MN

651 464 6260

www.countryloftquilt.com

JANOME

Reliability by Design

Sew With Me

Lake Elmo, MN

651-600-3258

www.sewwithwi.com



1st Sewing Center

Bloomington, MN

www.elna.com

~ ~ Silver Sponsors ~ ~



St. Cloud Sewing Center

St. Cloud, MN

320-251-6540

www.stcloudsewingcenter.com



Cherrywood Hand-Dyed Fabrics

Baxter, MN

888-298-0967

www.cherrywoodfabrics.com

~ ~ Bronze Sponsor ~ ~

Rosie Girl Quilting

Brooklyn Center MN 55429

www.rosiegirlquilting.com



Just Sew Studio

Waite Park, MN

320-654-1580

www.justsewstudiomn.com



Minnesota
Quilters inc

MINNESOTA QUILTERS, INC.™

253 State Street
St Paul, MN 55107-1612

MQ News is the monthly newsletter for members of Minnesota Quilters, Inc.™, a nonprofit organization formed to find and unite quilters and quilt enthusiasts throughout the state of Minnesota and elsewhere. MQ News is published twelve times a year by Minnesota Quilters, Inc.™

The views expressed herein are not necessarily those of Minnesota Quilters, Inc.™ Although every effort has been made to provide timely and accurate information, Minnesota Quilters, Inc.™ shall have no liability to any person or entity with respect to liability, loss, or damage caused or alleged to be caused directly or indirectly by the information contained in this newsletter. This publication is intended to provide generalized information only and not to render professional advice. No part of this publication may be reproduced, stored in a retrieval system or transmitted in any form or by any means, electronic, mechanical, photocopying, recording or otherwise without prior written permission of Minnesota Quilters, Inc.™ © 2023. All rights reserved. *Deadline for submissions is the first of the month for the following month. Ads and articles may be sent to Minnesota Quilters, Inc.™ Editor, 253 State Street, St Paul, MN 55107-1612, or e-mail editor@mnquilt.org*

The mission of Minnesota Quilters, Inc. is to nurture the art and craft of quilting through inspiration and education, to support our communities through our craft, and to honor our quilting heritage.
Established April, 1978.

For a printable form from our website go to: <http://www.mnquilt.org/documents/PaperMembershipForm.pdf>



Minnesota
Quilters inc

Minnesota Quilters, Inc.™ Membership Form

Member Information:

Payment Information:

Member name, or gift recipient's name (please print):	This membership is: New Renewing Gift
Address:	I would like to make an additional donation of \$
City: State: Zip:	Check Cash Visa MasterCard Discover
Home and/or cell phone:	Credit Card No:
Email: (needed to send you your newsletter and other MQ announcements)	Expire date: CVV2 3 digit code on back:
Membership Levels: Circle one. (all levels include free entry into general membership)	Name on credit card (please print):
\$45 Regular Access to all website features. Receive newsletter via email. Early registration for annual show. Textile Center Library privileges.	Phone:
\$20 Student Full time student. Access to all website features. Receive newsletter via email. Early registration for annual show. Textile Center Library privileges.	Signature:
\$75 Business Quilt-related business. Access to all website features. Link to your website. Receive newsletter via email. Textile Center Library Privileges.	I would like my newsletter: (check one) _____ Emailed to me in full color (Free!) or _____ Mailed to me in black and white for an additional \$20 per year.
\$20 Newsletter Postal Mailed Add to your dues price. Dues are not refundable.	

Please mail your completed form and payment to: Minnesota Quilters, Inc.™, 253 State Street, St Paul MN 55107 For questions call 651-224-3572