

**Minnesota Quilters January meetings are BOTH in person and on zoom.**  
**Thursday, January 4, 7 p.m.**  
**And Saturday, January 6, 10 a.m.**

## The Minnesota Quilt Show: YOU are Invited to The Big Reveal

January is the month that we reveal all the exciting news about our show: faculty and workshops, quilt entry information, and new features designed to help you connect with other quilters.

Our show website goes live in early January:  
[www.mnquilt.org/mq2024](http://www.mnquilt.org/mq2024)

Registration opens for members on January 16 at 10 am (nonmembers can register beginning February 1).

Everyone is invited to our January membership meetings at no cost – you don't have to be a member, you don't have to live in Minnesota, and you don't even have to be a quilter! You can attend in person at Recovery Church, 253 State St., St Paul (just south of downtown) OR you can attend via Zoom.

There are two date options: Thursday, January 4, 7 p.m. and Saturday, January 6, 10 a.m. Come or join half hour early for socializing. View the samples from our faculty. Stay for the door prizes which are related to the show. Invite a friend that has never been to our show - it's a great way to spread the word!

Register for the Zoom meetings using the links below. Once you register you'll get a link from Zoom. No need to register for the in-person option.

[Thursday, January 4, 7 p.m.](#)

[Saturday, January 6, 10 a.m.](#)



A key advantage to coming to Saturday's meeting is that you can bring scissors, rotary blades, and knives to be sharpened!

Edge Mobile Sharpening will be there to give you a sharp edge to help with your new year projects.

See the prices at this [link](#).

**Board of Directors**  
**Oct 1 2023 - Sept 30 2024**

**President**

Wynn Martin  
president@mnquilt.org

**Past President**

(Open)  
pastpres@mnquilt.org

**President-Elect**

Mea Cliff  
preselect@mnquilt.org

**Treasurer**

Marcy Huggins  
treasurer@mnquilt.org

**Secretary**

Deb Norsten  
secretary@mnquilt.org

**Communications Co-Directors**

Karen Kopitzke, Regina Zedell  
comm@mnquilt.org

**Education Co-Directors**

Liz McHenry, Sarah Parker  
ed@mnquilt.org

**Membership Co-Directors**

Karen Root, Wendy Kieser  
membership@mnquilt.org

**Operations Co-Directors**

(Open) Can you volunteer?  
ops@mnquilt.org

**Volunteers and Employees**

**Editor**

(open) Can you volunteer?  
editor@mnquilt.org

**MN Quilt Project Chair**

Carolyn Silflow  
mqp@mnquilt.org

**MQ 2024 Quilt Show**

**Coordinators**

(Open) Can you volunteer?

**Show Director**

Brenda Lyseng  
showdirector@mnquilt.org

**Bookkeeper**

Amy Fennwald  
bookkeeper@mnquilt.org

**Office Manager**

Debra Svedberg  
quilter@mnquilt.org

**Ongoing Events:**

**Wednesdays, Quilting for Others**, 11 am to 1 pm, pick up supplies and drop off finished work at Recovery Church. Keep an eye out for email and FB announcements that the 4th Monday of the month is a workday at MQ to get quilts and kits made.

**Mondays, Zoom Bee Sewing Days**, January 8, 15, 22 and 29; 10 am to 4 pm, Click to join:

<https://us02web.zoom.us/j/82747265102?pwd=eUQvakhJUDNLSTdYV3JMR2JHbDhLUT09>

Meeting ID 827 4726 5102 with passcode 986969 is valid for all 2024 Zoom Bee quilting days.

**MQ's 2024 Online Mystery Quilt!** From January 1 to August 1, click for [more details and/or to register](#).

**Calendar of Events:**

**January 4 and 6, 2024, Member meetings**, Quilt show preview, both meetings are in-person and on Zoom

**January 18-20, Day Retreat** at MQ. Sold out. Get on the wait list by starting registration at <https://cvent.me/4LX724>

**February 1 and 3, Member meetings**, Brita Nelson and Bess Casey Wilke

**March 7 and 9, Member meetings**, Minnesota Quilt Project

**March 18—21, Spring Getaway**, See info and registration: <https://cvent.me/0O0kmD>

**March 24, Class with Tracy Trevethan** Details and registration coming to your inbox soon.

**April 4 and 6, Member meetings**, Saturday, Wendy Richardson

**April 18—20, 2024, April Day Retreat** at MQ. Details and registration coming to your inbox soon.

**May 2 and 4, Member meetings**, Kristie Naranjo and Lori Adamietz

**June 13-15, 2024, The Minnesota Quilt Show**, DECC, Duluth

The MQ website has the complete calendar of events.

<https://mnquilt.org/eventschedule/>

**DEADLINE for February Newsletter:** Tuesday, January 9. Send newsletter articles and photos to [editor@mnquilt.org](mailto:editor@mnquilt.org). *Later submissions may be saved for the following month's newsletter.* The newsletter deadline is the Tuesday after the Saturday meeting. Send Show and Tell photos to [showandtell@mnquilt.org](mailto:showandtell@mnquilt.org). Include descriptions if you wish.



**Minnesota  
Quilters inc**

# The Minnesota Quilt Show

June 13 - 15, 2024

Duluth Entertainment Convention Center, Duluth



## The Minnesota Quilt Show: Your January Checklist

Let the show committee worry about all the planning and details! Here's **your** short list for the month of January:

- ◇ Fill in your 2024 calendars!
  - January 16: Registration starts for members
  - February 1: Registration starts for non-members
  - April 16: Quilt Entry deadline
  - June 1: Advanced Registration deadline
  - June 13 – 15: Show Time at the Duluth Entertainment Convention Center
- ◇ Obtain or print a copy of the Registration Guide (attached to this email and available at the Big Reveal)
- ◇ Plan the general framework of your attendance.
  - If you are taking workshops and want to attend the Friday banquet, then you will do Advanced Registration. This also gives you admission to the show floor all 3 days.
  - If you want to see the quilts, vendors, and attend a lecture but no workshops, you can purchase a Daily Admission Ticket or a Multiday Ticket. Daily Tickets are available now at the Minnesota Quilters online store ([www.mnquilt.org/mq-store](http://www.mnquilt.org/mq-store)) and can be used for any day of the show. If you purchase tickets now they are \$2 off! Daily and Multiday tickets can be bought at the show.
- ◇ Decide which workshops and lectures you want to attend using the Registration Guide and the show website. For each workshop you will find information about the faculty, a description and photo, whether or not a sewing machine is needed, the supply list, and the fees. Note that members get a reduced fee for workshops. Not a member? You can join when you register!
- ◇ If you are a member watch for an email on January 16 from Minnesota Quilters. Use the link in the email to register so you will get the member rates.
- ◇ Make your hotel reservation. MQ has discounted blocks at 7 hotels.  
[www.mnquilt.org/mq2024](http://www.mnquilt.org/mq2024)



## The Minnesota Quilt Show

June 13 - 15, 2024

Duluth Entertainment Convention Center, Duluth



# Why do I pay for Advanced Registration?

Karen Knoll & Linda Wines [registration@mnquilt.org](mailto:registration@mnquilt.org)

Registering in advance for the show allows you to register now for: ► Workshops ► Lectures ► Lecture Pass (good for any and all lectures), plus ► Banquet on Friday night. You'll also receive a name badge at the show that gives you access to the vendors and quilt exhibits all three days of the show.

Advanced registration for the Show is \$35 for MQ members and \$45 for nonmembers.

If you are registering for classes, register early to ensure you get into the classes of your choice. On the show website ([www.mnquilt.org/mq2024](http://www.mnquilt.org/mq2024)) you'll find all the workshop and lecture information along with photos and supply lists. Waitlists are available for the classes that fill.

Registration for MQ members opens on Tuesday, January 16th, and opens to the general public on Thursday, February 1st. Members should watch for an email that will have a link just for YOUR registration.

Nonmembers can join MQ anytime [at this link](#). Then you will be able to register as an MQ member, getting the member prices for show registration, any classes, lectures, quilt entry, along with regular member benefits. If you join by January 15 you will receive the email inviting members to register on January 16.



← Look for this sign at the Show to pick up your name badge, any tickets you purchased, etc.



Minnesota  
Quilters inc

## The Minnesota Quilt Show

June 13 - 15, 2024

Duluth Entertainment Convention Center, Duluth



# What's New for the 2024 Show?

- Outreach to other fiber artists! We know many of you explore other fiber arts besides quilting – or you may be curious. We are inviting 'quilt adjacent' organizations to join us at The Connection to demonstrate their craft. We are seeking vendors that sell beyond the quilting supplies.
- Daily ticket prices for nonmembers have been dropped to \$15. Lecture prices have been reduced to \$10 for members and \$15 for nonmembers. Show hours on Thursday and Friday have been shortened to 9—5.
- Advanced registration for workshops and quilt entry registration will be combined! When you register for your workshops, you can also enter your quilts. OR you can just sign up for workshops. OR you can just enter quilts. Whatever you decide, it will be one registration and one confirmation number. Signing up for workshops now but not sure if you will enter a quilt? No problem! You can modify your registration later.
- Introducing a logo exhibit: I'm MQ, Are You? How can you represent the new logo in fabric, yarn, ribbon, etc.? No rules!
- Revamping the MQ Challenge: we have added a new dimension of shortening the time frame to purchase your packet in January and exhibit it in June! You can do it!
- Sell your exhibited quilt! When you enter your quilt, you will have the option to indicate it is for sale. We will connect potential buyers with you.
- Add a sound clip to your quilt gallery card! Add another sense to the viewer's experience. Youth especially are encouraged to explain their creative process.
- No Quilt Auction this year—we are exploring other venues in order to offer items to non-quilters.



Louise Somers, Ann Somers and Jeanne LaMoore



Minnesota Quilters inc

## The Minnesota Quilt Show

June 13 - 15, 2024

Duluth Entertainment Convention Center, Duluth



## CONNECT at The Minnesota Quilt Show



### Set Sail for The Minnesota Quilt Show Annual Banquet

Tina Rhode and Colleen Shaskin [banquet@mnquilt.org](mailto:banquet@mnquilt.org)

On Friday evening, June 14, we will host our annual banquet. Hoist the Sails social hour will start at 5 p.m. Bring one or more of your orphan block/s. Find a new home for your block on Treasure Island, Fantasy Island or Castaway Island. A cash bar will be available. No ticket is required.

At 6:30 p.m. we will board the ship and be seated for the banquet and program. Tickets are \$45 for members and \$50 for non-members. You need to register for the show to purchase tickets and choose your meal. Dinner options are:

Artichoke Chicken (gluten free)

Pan-Fried Walleye

Pork Tenderloin (GF)

Spicy Sesame Zoodles (Vegan, GF)

The evening's featured speaker is Maria Shell. She will share her story, "Stitching Towards Discovery - An Improv Story". For added fun on the high seas there will be a design challenge using Maria Shell's Kitchen Sink Quilting – The Art of Making Do technique. Along with Maria we will add two more sailors to have three artists create quilts using the orphan blocks in a design challenge. After the show the quilts will be completed and donated to the Quilting for Others program.

Wait there is more! We have the opportunity for you to become captain of your own ship (table). There are ten tables that you can pay \$50 to reserve a table for 8 banquet ticket holders to sit at. As captain you will be able to select your crew to occupy your table. Like last year, all other tables are open seating—first come, first serve.

Don't miss out on the fun and we guarantee smooth sailing.

Table Names:

Storm at Sea

Snail Trail

Compass Star

Blockade

Drunkard's Path

Goose in a Pond

Leap Frog

Ocean Waves

Storm Signal

Watered Ribbon



## Quilting For Others at the Show

Aileen Lively [showqfo@mnquilt.org](mailto:showqfo@mnquilt.org)

Come join us at the Quilting for Others (QFO) area at the show. It's a great place to relax and do what all of us love to do, chat and sew.

Last year in St. Cloud, we had many visitors who came to see what we were doing, and sew a new block or one of our popular heartstring or string star blocks. We collected enough blocks to make almost two heartstring quilts, and nearly enough for a string star quilt.

For 2024, we have set a goal of making as many or even more in Duluth. We hope, thanks to our generous vendors, to have more machines to test out and use. All sewers of any ability including kids and grandkids are welcome, and we will help get you started or guide you through the entire process. Hope to see you there!



There are so many opportunities to learn something brand new to you or to find an easier way to create your works of art. You can sign up for a workshop, attend a lecture, or sit in at the Learning Stage.

Workshops: Workshops begin on Wednesday, June 12 and continue through Saturday, June 15. They are either 3 hours or 6 hours in length. We have a special series this year just for beginners! Rose Allen is offering 4 one-hour hands-on demonstrations to share tips and allow for practice on cutting, piecing, quilting, and binding. Helen Smith Stone is offering a full day workshop from start to finish on a 9 Patch quilt - also for beginners! There are workshops about piecing, applique, art quilts, design theory, handwork, and quilting.

Our faculty this year are: Rose Allen, Ruth Ann Berry, Vicki Conley, Maday Delgado, Gyleen Fitzgerald, Gwen Hanvy, David Owen Hastings, Page Johnson, Kathie Kerler, Brandi Maslowski, Karlee Porter, Kyra Reys, Maria Shell and Helen Smith Stone.



**Want to know  
what these  
workshops are  
called and  
who is  
teaching  
them?**

**Come to the  
January  
meetings!**





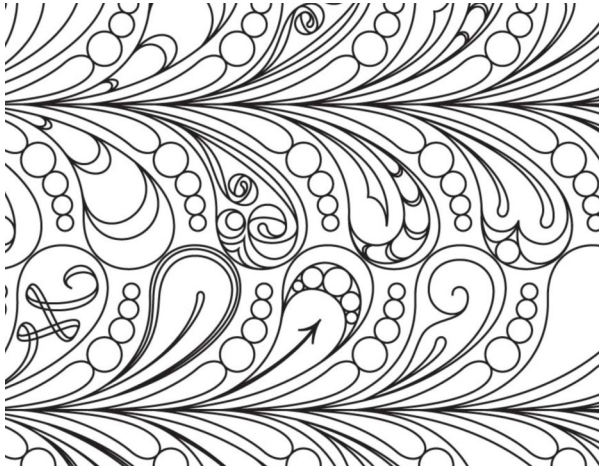


# The Minnesota Quilt Show

June 13 - 15, 2024  
Duluth Entertainment Convention Center, Duluth

Minnesota  
Quilters inc

## LEARN at The Minnesota Quilt Show



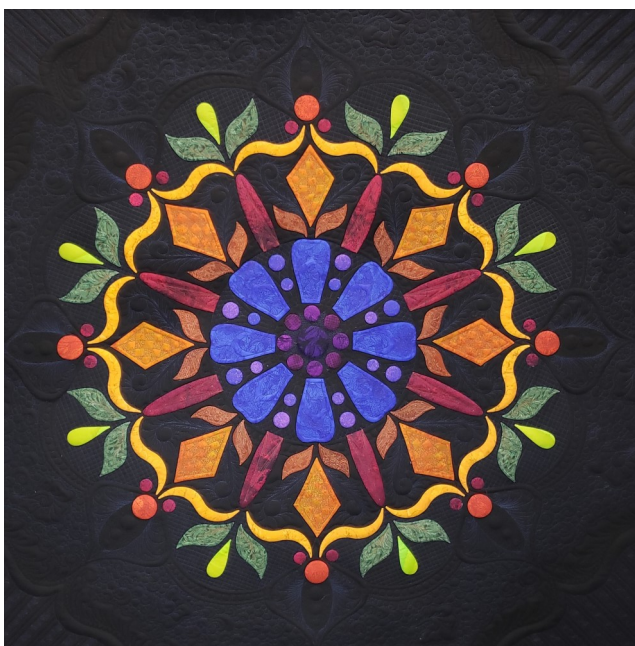


Minnesota  
Quilters inc

## The Minnesota Quilt Show

June 13 - 15, 2024  
Duluth Entertainment Convention Center, Duluth

## LEARN at The Minnesota Quilt Show



Member fees for workshops range \$44 - \$68 for 3-hour workshops and \$85 to \$130 for 6-hour workshops. Nonmembers pay \$14 - \$22 more for workshops. You do need to pay the registration fee to sign up for workshops by using Advanced Registration.

### Lectures:

Many of our faculty are also offering lectures – from trunk shows to peeks into their studio to yoga for quilters! The 12 lectures are Thursday – Saturday. We have a goal to increase our attendance at the lectures and so we have cut the price for individual tickets to \$10 for members and \$15 for nonmembers. A lecture pass is also available for the price of 4 lectures. Individual tickets and passes can be purchased during registration or at the show.

### Learning Stage:

Jeanne LaMoore [learningstage@mnquilt.org](mailto:learningstage@mnquilt.org)

The Learning Stage has become a wonderful place for vendors, teachers, and quilters just like YOU to share a skill, technique, some history, or a new idea to a wider audience. Last year we saw a range of presentations that were interesting and informative.

Some quilters seek out the Learning Stage to ...learn! Others just use it as an opportunity to sit and rest while they are informed and/or entertained. Presenters have access to a laptop, projector, document camera and microphone. Some brought handouts and others did a "Show & Tell" style presentation.

Think about what quilting tidbit you would love to share with others. Just like with MQ's September School House, many of us are teachers. If you have an idea you'd like to share on the Learning Stage in June, contact Jeanne LaMoore at the email above. We look forward to seeing you in Duluth at the Show!

## ADMIRE at The Minnesota Quilt Show

### Special Exhibits

Adrienne Lemberg and Laura Nagel [specialexhibits@mnquilt.org](mailto:specialexhibits@mnquilt.org)

Special Exhibits are really special this year. We have a few of your favorite contributors as well as some new entries.



Carol Hancuh "And the Beat Goes On"



Cherrywood Monarch Challenge

Our anchor exhibit is the Monarch Cherrywood Challenge with vibrant shades of orange and green echoing nature's beauty. (picture above right)

Quilt artist Carol Hancuh has a delightful group of quilts that pay homage to your favorite tunes from the 60s with "And the Beat Goes On." (picture left) Even if you weren't around for that era, I bet you'll be able to hum a few bars after listening to the audio that accompanies each quilt.

The Daystitchers of Prior Lake have been busy with their latest challenge called "Blue Ribbon Quilts." While they have not all won blue ribbons, each quilt is required to incorporate a 'blue ribbon' block as part of its design.

Award-winning long arm quilter Page Johnson and her group have revived and restored several orphan blocks and quilt tops. The fabulous results called "Rescue Quilts" will be on display and discussed in her lecture.

# ADMIRE at The Minnesota Quilt Show

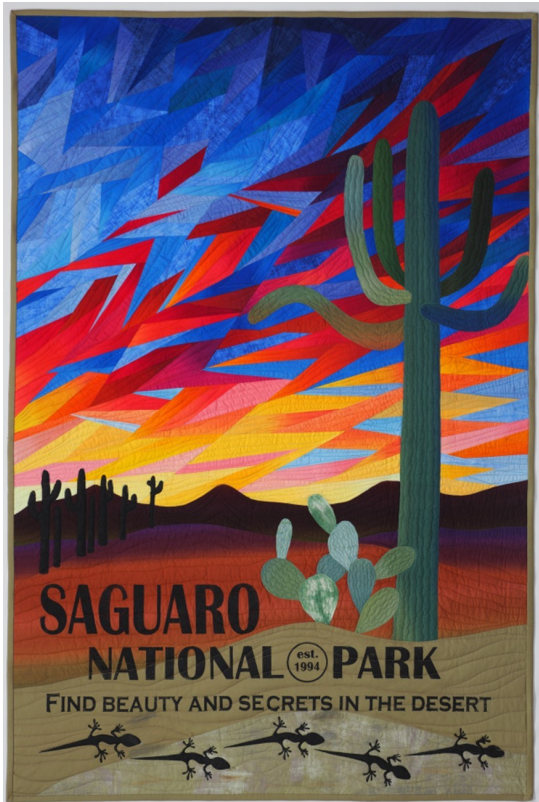
## Special Exhibits

Adrienne Lemberg and Laura Nagel [specialexhibits@mnquilt.org](mailto:specialexhibits@mnquilt.org)

Vicki Conley will whet your appetite for travel as she entices viewers with her National Parks collection. The Mahtomedi Evening Star Quilters are bringing 25 Awesome Chickens to roost in the exhibit hall - quilts, that is.

And the metro SAQA group, Studio Art Quilt Associates, will present their latest challenge using a piece of African fabric for inspiration.

All eras and styles will be represented, from American Quilt Study Group's (AQSG) "19th Century Blues: It's More Than Indigo", to Minnesota Contemporary Quilters' "Harmony" challenge, Minneapolis Modern Quilt Guild's "What is a Modern Quilt?," and the "Community Quilt Project" initiated by the Minnesota African American Heritage Museum and Gallery.



Vicki Conley National Parks



25 Awesome Chickens

Representing the Zenith City are two accomplished Duluth quilters. Claudia Clark Myers will enchant us with her most recent work, and Helen Smith Stone with the assistance of Northern Lights Quilt Guild (NLQG) will once again adorn the DECC rotunda with an array of quilts made from patterns by Minnesota designers.

This is just one aspect of the 2024 Minnesota Quilt Show not to be missed. Mark your calendars, register for classes, buy admission tickets, and join the state's largest quilting community for a spectacular quilters week in Duluth.



## 2024 Quilt Entry Information!

You have a lot of options for entering quilts this year – so start planning!

- Judged – you can enter 2 quilts but they need to be in different categories. These quilts do receive feedback from nationally certified judges
- Non-judged – you can enter 2 quilts
- 2023 MQ Mystery Quilt – if you signed up for this, time to finish up!
- President's Challenge—Placemat Blocks.
- Maple Island BQ Nation Challenge – enter your variation of BQ5 or BQ5 Encore patterns
- MQ 2024 Challenge – purchase your packet now and enter 1 quilt
- Youth – 18 or younger only!
- I'm MQ, Are You? Logo Exhibit – enter 1 item

Members will register their quilts using their personalized link emailed on January 16. Nonmembers can register through [www.mnquilt.org/mq2024](http://www.mnquilt.org/mq2024) on that same date. Entry Deadline for all exhibits is Tuesday, April 16.

All quilt entries can now be mailed to or dropped off at MQ between Tuesday, May 28 and Friday, May 31. In addition, quilts other than those in Judged, can be dropped at specific quilt shops between Tuesday, May 28 and Saturday, June 1 or even at the show on Monday, June 10 between 11 and 4.

Why can't judged quilts be dropped off at quilt shops or the show? Because we need to sort them into the judged categories, repackage them, and that requires extra time.

And then we do the reverse and get your quilts back to you! Quilt pick at the show begins at 5:30 on Saturday, June 15. You will also have the option of picking up your quilt at MQ on June 19 and 20, picking up at the quilt shops, or having us mail them back. *Continued on next page.*



Mike Ellingsen My Small World



Faye Bodenhamer won Viewer's Choice last year called Road to Bellingham.



## 2024 Quilt Entry Information!

When you enter your quilt, you'll get more information about preparing your quilt, and options for drop off and pick up. If you have any questions about the registration process, please contact [quiltentryhelp@mnquilt.org](mailto:quiltentryhelp@mnquilt.org).

Thanks to these participating shops for quilt drop off and pick up:

**Cherrywood** - Baxter

**Just Sew Studio** - Waite Park

**Pine Needles Quilt and Sew** - Rochester

**Sew With Me** - Coon Rapids

**Sew With Me** - Lake Elmo

**Four Seasons Quilts** - Maple Grove

**McTavish Quilting Studio & Fabrics** - Duluth

**Quilters Haven** - Rosemount

**Sew With Me** - Duluth

If you have questions, please contact:

Dianne Conner or Carolyn Davidson

Nonjudged Quilt Committee

[nonjudged@mnquilt.org](mailto:nonjudged@mnquilt.org)

Sarah Parker and Susan Kiester

Judged Quilt Committee

[judged@mnquilt.org](mailto:judged@mnquilt.org)

Paulette Marini and Lisa Stene

Youth Quilt Committee

[youth@mnquilt.org](mailto:youth@mnquilt.org)

Pat Curtner and Karen Kopitzke

Challenge Committee

[challenge@mnquilt.org](mailto:challenge@mnquilt.org)

Sue Rufford

Quilt Entry Logistics

[quiltentryhelp@mnquilt.org](mailto:quiltentryhelp@mnquilt.org)



## Yes, YOU can Enter Your Quilt into the Judged Exhibit!

[judged@mnquilt.org](mailto:judged@mnquilt.org)

The Judged Quilts are a key part of The Minnesota Quilt Show. Believe it or not, there are people who come to the show just to look at the quilts and we want them to be wowed.

Consider entering a quilt or two into the Judged Quilt portion of the show. Here are the categories that you can choose:

- Applique—Large
- Applique—Small
- Art
- Group
- Mixed Techniques—Large
- Mixed Techniques—Small
- Modern
- Other Techniques
- Pieced—Large
- Pieced—Small
- Upcycled Quilts
- Workmanship

There is an exciting new category this year:  
**Upcycled quilts.**

This includes quilts that are made with materials which were previously used for something else. This may include fabric used for clothing, upholstery, bags, napkins, placemats, tablecloths, or other cloth objects. It may also include old quilts that are reimagined into a new configuration.

The quilt can be of any style (pieced, applique, mixed, modern, art, pictorial) but must include at least 50% upcycled material on the front of the quilt. This should be a flat quilt, not a freestanding sculpture or garment, with 3 layers consisting of a top, batting and backing.

The usual judging criteria will apply but special consideration will be given to creative use of materials.

For those who love to make miniatures, those quilts should be entered in the existing category based on the primary construction technique. The judges will review all the miniatures and award a ribbon for best miniaturization.



Mary Kerr "Quilt as desired"

## Youth Exhibit

Paulette Marini & Lisa Stene [youth@mnquilt.org](mailto:youth@mnquilt.org)

Part of Minnesota Quilters' mission statement is "to nurture the art and craft of quilting". So with this in mind, our annual quilt show is expanding our youth exhibit.

We are spending countless hours going to every quilt show (any excuse to go to another quilt show), to every quilt shop to talk with owners ("Oh my, must I really go to another quilt shop?"), and looking for all those hidden gems that our young people have made.

We are asking every grandmother, grandfather, mother, father, aunt, uncle and friendly neighbor to help us. Please report any possible entries to us. Thanks!



Wanda Shelton taught Maddie how to quilt and Maddie entered youth.

Did you know?

- Youth don't enter their quilt directly but YOU can enter on their behalf as part of your registration process. You can enter up to 3 youth quilts.
- Youth that enter a quilt receive free admission to The Minnesota Quilt Show and have their name entered in a special drawing.
- We would LOVE to have our youth make an audio recording about their quilt. A QR code will be added to their gallery card so we can listen in!



Pat Basch with her students Paige Poppinga, Anissa Jones and Sarah Kerr





## Challenges

### President's "Favorite Block" Challenge

Wynn Martin [president@mnquilt.org](mailto:president@mnquilt.org)

Every year we announce the president's challenge. This year's challenge is focused on creating placemats for Meals on Wheels. The challenge is quite simple: Pick your favorite quilt block, make 2 matching placemats. We will exhibit the placemats at the show and then deliver them to Meals on Wheels in Duluth. Why make two? We believe that meals are often delivered to homes with two residents, so it makes sense to provide a matching set.

Here are the guidelines:

1. Pick your favorite block pattern. Make two 12.5" blocks using the same pattern and fabric.
2. Add a side panel that measure 6.5 x 12.5" to the left edge. You can keep it simple or fancy; whatever makes you happy.
3. Add batting, backing and quilt as needed. Add a bound edge and it's done.

Finished size will be 12" x 18". Directions for submitting your finished placemats will be provided on the show website.

As an entrant you will be entered in a drawing for a \$50 gift card to your favorite quilt shop. The more placemats you submit, the more chances to win a gift card.

### MQ Logo Exhibit: I'm MQ, Are You?

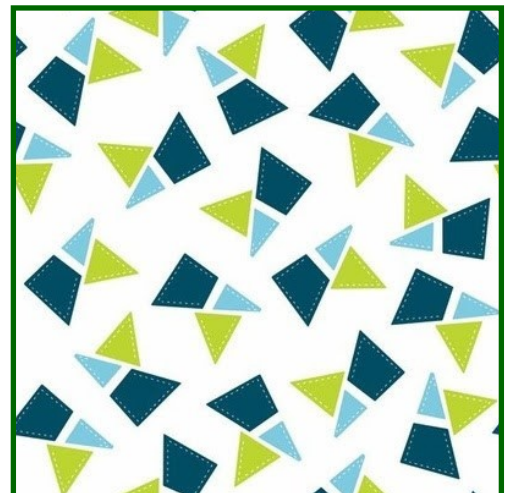
[challenge@mnquilt.org](mailto:challenge@mnquilt.org)

Last year, Minnesota Quilters unveiled a new logo as well as a new show name, The Minnesota Quilt Show.

We want to celebrate a successful roll out by inviting each of you to enter this exhibit at our 2024 show.

Here are the details:

- ◇ Features the MQ Logo or logo colors
- ◇ No other rules!
- ◇ It doesn't even have to be a quilt! We would love to see items made in other creative ways.
- ◇ We are offering fabric featuring the logo as well as two pattern options designed by Margaret Lundberg and Rebecca Ruth Anderson. Shop at MQ's store: <https://quiltshow.square.site/>
- ◇ No entry fee for MQ members, \$15 for non-members
- ◇ Enter your item using the quilt entry registration process
- ◇ Vote for your favorite at The Minnesota Quilt Show!



## 2024 MQ Challenge

Karen Kopitzke, Pat Curtner [challenge@mnquilt.org](mailto:challenge@mnquilt.org)

There is a whole new look to this year's challenge. A whole new challenge perspective. The challenge is to create a flat, small quilt using items that appear to have no relationship to one another. It can be any type of quilt: landscape, abstract, traditional, collage, you name it. Try a technique that is new to you or one that you have been wanting to give a try. Set yourself free!

**Packets**—Your 2024 Show Challenge packet is a collection of items that seem to have no relation to each other. The packet contains: (fabric, elastic and yarn sizes are approximates)



- 4" by 6" focus fabric featuring a bird.
- 4" by 6" black fabric with brightly colored lines in a geometric pattern.
- 18" piece of round orange elastic.
- 18" piece of light green/silver yarn (purchased just for you in Nantes, France)
- A one-inch honeycomb paper template.

Packets will be available from January 5, 2024, to April 17, 2024. Acquire packets at in-person membership meetings, during your Advance Registration, and through the Minnesota Quilters, Inc. Online Shop. Packets ordered through Advance Registration or the MQ shop will be mailed to you within ten business days.

**Prices**—each packet costs \$5. Registering your quilt during Quilt Entry costs \$20.

**Awards**—1st place \$100, 2nd place \$75, 3rd place \$50.

### Rules:

- Use any fabrics you like so long as you include bits of the two fabrics and the two embellishments on the front of your entry.
- These bits must be large enough to be easily seen.
- You must use the honeycomb (in fabric, of course) at least once on the front of your entry.
- Keep it small. The perimeter of your entry must be equal to or less than a total of 64".
- The item must consist of three layers - top, batting and backing. The three layers must be secured with quilting or tied.
- Any technique or securely attached embellishments may be used.

### Important Dates:

January 4, 2024: Packets will become available for purchase at meetings.

February 1 through April 16, 2024: Time frame to register your entry into Cvent.

June 10, 2024, 11 a.m. to 4 p.m.: Absolute last minute to get your registered entry to the Duluth Entertainment Convention Center.

## SHOP at The Minnesota Quilt Show

### VENDORS! VENDORS! VENDORS!

Char Wenger & Jeanne LaMoore [vendors@mnquilt.org](mailto:vendors@mnquilt.org)

Bernina—Diamond Sponsor  
Cherrywood Fabrics—Silver Sponsor  
Country Loft & Design—Gold Sponsor  
Elna—Gold Sponsor  
Eye of the Beholder Quilt Designs—Bronze Sponsor  
From My Heart to your Hand  
Hawaiian Moon  
Ilene Bartos Designs  
Janome—gold Sponsor  
Jeri's Quilt Patch—Silver Sponsor  
Just a Little Something  
Kristen Aune Textiles— NEW VENDOR  
Liberty Homestead  
Maggie the Massage Pillow

Martelli Enterprises  
Patterns on the Prairie—NEW VENDOR  
Pine Needles Quilt & Sew  
Purple Pineapple Studio  
Quarry Quilts & Yarn  
Quirky Quilt Shop—Bronze Sponsor—NEW VENDOR  
Redfern Enterprises  
Reproduction Fabrics  
Sallie Tomato—NEW VENDOR  
Sticky Roller  
The Howells Nest  
Tracey's Tables—NEW VENDOR  
Villa Rosa Designs  
Whoopsa Daisy Farm

The 2024 MQ show already has 28 vendors signed up to attend our show in Duluth and the list grows every day. There will be something for everyone! We will be highlighting some of these vendors in future issues of the newsletter. We hope you see some of your favorites and some that are new and you are intrigued about! Please let us know about vendors from other fiber arts—knitting, embroidery, etc. – as we would like to expand the variety.





## Minnesota Quilt Project

Carolyn Silflow [map@mnquilt.org](mailto:map@mnquilt.org)

At the MQ show in June, the Minnesota Quilt Project booth will offer for sale vintage quilts, tops, and blocks that have been donated. The funds generated from the sale are used for education and outreach activities of MQ. Shown here are items we have received: a star quilt and a wedding ring variation top made from fabrics of the 1940's era.

If your stash includes vintage items that you no longer need, please consider making a donation! To make a donation you can e-mail [map@mnquilt.org](mailto:map@mnquilt.org) and/or you can drop off items at MQ on Wednesdays between 11 am and 1 pm.



Two bottom pictures from previous shows.



## SUPPORT The Minnesota Quilt Show

Laurie Klinkhammer, Rhende Hagemeister [showvolunteers@mnquilt.org](mailto:showvolunteers@mnquilt.org)

Are you curious about volunteering for The Minnesota Quilt Show? Great! Volunteering is important, offering essential help to worthwhile causes, people in need, and the wider community. Many organizations and charities rely on the generosity of volunteers as they're often only partly funded and cannot afford to pay salaries for all their staff. Many organizations depend almost solely upon teams of volunteers to help them thrive and do their work. Minnesota Quilters, Inc (affectionately referred to as MQ) is one such organization.

You may have a few questions about volunteering... Are the jobs hard? Is training needed? When and where do I signup? The good news is volunteer jobs are not hard, training varies by the volunteer position and is usually provided at your assignment, and we're gearing up for signup via Signup Genius. Here are some of the ways many hands make light work and have fun whilst doing so.

**Setup Helpers.** Help with show setup at the venue: vendor move in, the banquet, and displaying the quilts – special exhibits, challenge, non-judged, judged

**Equipment Helpers.** Help loading and unloading the truck near the MQ office and at the venue.

**Judged Helper.** Help with quilt intake at the MQ office; during show week with quilt judging, hanging, take down and return; after the show with quilt return.

**Booth Helpers.** Help during the show at various booths: QFO (Quilting for Others) – trimming & assembling blocks; MQP (Minnesota Quilt Project) - purchases & keeping things tidy; Admissions, Advanced Registration, and Merchandise.

**Classroom Helpers.** Help with attendance and as needed by teachers. Must be registered for the class.

**It's a Wrap! Helpers.** Help after the Show with taking down and packing up, vendors, and returning quilts.

Show Committees Co-Chairs determine their volunteer needs that are then made available to volunteers through Sign Up Genius. Pre and After Show volunteering takes place primarily at the MQ Office in St. Paul, MN. Show Week volunteering is at the show venue this year being the Duluth Entertainment Convention Center (DECC) located on the waterfront steps away from Canal Park and near Duluth's famous Aerial Lift Bridge.

Current Pre-Show Volunteer signups are here:

[https://www.signupgenius.com/go/2024\\_Pre\\_Show](https://www.signupgenius.com/go/2024_Pre_Show)



Most volunteer jobs do not require muscles even though Tom Lyseng and Jeanne LaMoore are showing off theirs!

## Running the Show

Claudia Myers ©

In 1997 and 2001, I was co-chair for the large and prestigious Minnesota Quilt Show. This is a state guild show with, at that time, about 350 members and a show turn-out of upwards of 2,000 people. It takes at least a year to plan and put together each annual show, which gives you and the 12 committees plenty of time for contention, temper tantrums, disasters and happenings that threaten to derail the show itself (which really never happens.) The show goes on with or without numerous hitches. The doors open, the classes are taught, the quilts compete for ribbons and prize money, the quilters spend their "show money" at the vendors, somebody wins the raffle quilt, the show closes, the quilts are returned, everybody goes home and starts their new quilt projects. Amen. All in, all done. Until next year.

In 1997, Shirley Kirsch was my co-chair. Everybody knew Shirley, she had started the North Country Quilters in Duluth and it was said that Shirley taught most every quilter in our area to piece and hand-quilt. No one in the quilt world had ever heard of me. I had attended the Minnesota Quilter's Show in St. Cloud in 1994 and when I came home, my son-in-law, who was CFO of the DECC at that time, asked me why MQ never held their show at the DECC-the Duluth Entertainment and Convention Center. How would I know? So, I asked someone on the Minnesota Quilters Board of Directors and she said "because we can't get anyone to chair it from that area." My mouth opened, my brain disconnected and I said "I can do that". MQ immediately took me up on it and I immediately broke out in hives.

At that point in my life, I had been the backstage go-to person for The Minnesota Ballet, St Scholastica Theater productions and the Baltimore Opera Company. I rationalized to my self "How different could it be? A show is a show is a show". Right?

Wrong. This show was run by volunteers. The largest show in the U.S. to be completely run by volunteers. Mostly volunteer women. A large GROUP of women, two to a committee plus a Treasurer, Secretary and two chairmen, all crammed into a small meeting room, all talking, laughing, arguing, taking turns bringing coffee and snacks, taking turns giving their committee reports. Twenty-eight women. As the saying goes, "Like herding cats". I had never run meetings before, never stood up in front of a large group and had actual common sense come out of my mouth. In fact, I would warn people at the beginning of the meetings that if I hyper-ventilated and slid under the table, I'd appreciate someone retrieving me. One committee member stood up and said she certainly wouldn't be buying any tickets for the Show raffle quilt. What?! We had chosen to do a quilt with a number of "Compass Roses" on it. That is a Mariner's Compass with a cut-out and appliqued rose in the very center-a very old, very traditional block. But, that person didn't care for our choice, so, no tickets for her! And so it went.

*Continued on next page.*

About the third meeting, however, I realized that if I didn't give the committees too many choices, things went much more smoothly. They didn't have to take sides and debate the fact that a tote-bag for a quilt show should be large enough to carry at least fifteen pounds of newly-purchased fabric. But what if a 54-year-old 125 pound woman couldn't carry it around? It took half the meeting to settle that storm!

To facilitate matters, I would say "Listen up, committees, here we have some things to sell at the show in our MQ Merchandise booth. We have Show logo T-shirts in red and navy blue (never mentioning the green, orange and black ones.) Which ONE shall we sell? Okey! The red one it is!"

As I said, Shirley Kirsch was my co-chair and she knew everybody who could be called a quilter. So she was in charge of recruiting and hiring the teachers for the quilt classes that we were offering. We both wanted a stellar line-up. We wanted teachers that quilters who didn't travel to the big quilt shows might not have an opportunity to learn from. Teachers that we, ourselves, would like to take from. Those people are usually booked out way in advance, so we started contacting our choices two and a half years before the show. One woman responded with "Well, Shirley, I'm 83 now. I'm not sure I'll still be here in two and a half years". To which Shirley replied, "That's okey, Blanche. If you're not, don't come."

We jokingly said the other Shirley thing was the weather during the four-day show. That came about because of Duluth's reputation for changeable conditions and the fact that the show was in June and a few years back, there had still been ice in the harbor in June. So Shirley fretted and lost sleep, worrying that no one was going to come to our show.

Well, that didn't happen. We had over 2,500 members, local people and visitors attend the show and after the numbers were all in, the DECC catering department reported that Minnesota Quilters now held the dubious record of having consumed the most gallons of ice cream in a four-day period. Ever.

And Shirley heaved a big sigh of relief.

*Pat Cox and Claudia Myer at the 2001 Minnesota Quilt Show.*





# The Minnesota Quilt Show

June 13 - 15, 2024  
Duluth Entertainment Convention Center, Duluth

Minnesota  
Quilters inc



# Our Show Committee

Admissions	<a href="mailto:admissions@mnquilt.org">admissions@mnquilt.org</a>	Karen Root, Jan Schmidt
Advanced Registration	<a href="mailto:registration@mnquilt.org">registration@mnquilt.org</a>	Linda Wines, Karen Knoll
Banquet	<a href="mailto:banquet@mnquilt.org">banquet@mnquilt.org</a>	Tina Rhode, Colleen Shaskin
Bus Tours	<a href="mailto:bustours@mnquilt.org">bustours@mnquilt.org</a>	Margaret Lundberg
Challenge	<a href="mailto:challenge@mnquilt.org">challenge@mnquilt.org</a>	Pat Curtner, Karen Kopitzke
Equipment Manager	<a href="mailto:equipment@mnquilt.org">equipment@mnquilt.org</a>	Jude Edling
Judged Exhibit	<a href="mailto:judged@mnquilt.org">judged@mnquilt.org</a>	Sarah Parker, Susan Kiester
Learning Stage	<a href="mailto:learningstage@mnquilt.org">learningstage@mnquilt.org</a>	Jeanne LaMoore
Marketing	<a href="mailto:marketing@mnquilt.org">marketing@mnquilt.org</a>	Jennifer Viedma, Susan Panelli
Merchandise	<a href="mailto:merchandise@mnquilt.org">merchandise@mnquilt.org</a>	Louise Somers, Mary Willard
Non-judged Exhibit	<a href="mailto:nonjudged@mnquilt.org">nonjudged@mnquilt.org</a>	Carolyn Davidson, Dianne Conner
Photography	<a href="mailto:photography@mnquilt.org">photography@mnquilt.org</a>	Peggy Stockwell
Printing	<a href="mailto:printing@mnquilt.org">printing@mnquilt.org</a>	Linda Wines
Quilt Entry Logistics	<a href="mailto:Quiltentryhelp@mnquilt.org">Quiltentryhelp@mnquilt.org</a>	Sue Rufford
Quilting for Others	<a href="mailto:showqfo@mnquilt.org">showqfo@mnquilt.org</a>	Diane Rose, Aileen Lively
Raffle Managers	<a href="mailto:raffle@mnquilt.org">raffle@mnquilt.org</a>	Dorothy Sand, Margaret Pidde
Ribbons	<a href="mailto:ribbons@mnquilt.org">ribbons@mnquilt.org</a>	Kathie Simon Frank
Signage	<a href="mailto:signage@mnquilt.org">signage@mnquilt.org</a>	Donna Rockette
Special Exhibits	<a href="mailto:specialexhibits@mnquilt.org">specialexhibits@mnquilt.org</a>	Laura Nagel, Adrienne Lemberg
Vendors	<a href="mailto:vendors@mnquilt.org">vendors@mnquilt.org</a>	Char Wenger, Jeanne LaMoore
Volunteers	<a href="mailto:showvolunteers@mnquilt.org">showvolunteers@mnquilt.org</a>	Laurie Klinkhammer, Rhende Hagemeister
Youth Exhibit	<a href="mailto:youth@mnquilt.org">youth@mnquilt.org</a>	Paulette Marini, Lisa Stene
Show Director	<a href="mailto:showdirector@mnquilt.org">showdirector@mnquilt.org</a>	Brenda Lyseng

Wondering how this is all possible?

Ask these people what their role is and how you can help!



Above: MQ Bookkeeper, Amy; "The copier guy"; and Office Manager, Debra. To right: Wanda Shelton.





Due to the high volume of donations last year to the Quilt Auction for the show, we had a dilemma: what to do with the remaining items? An idea that has been percolating for a while is to switch our audience from fellow quilters to the general public. We have used an online auction software that did allow people to make bids without being at the show but we wanted to try another tactic: sell to the public at a fall boutique.

We took a first step by participating in an annual holiday boutique at Dakota Hills Middle School in Eagan on December 2. THANK YOU to our volunteers: Louise Somers (coordinator), Deb Norsten, Mary Tague, Jeanne LaMoore, Debra Heymans, Cathy Hinrichs, Karen Root, and Rose Allen. We also had the items available during the Friday Frenzy on December 8.

Was it successful? Yes!

- ◇ Publicity for MQ and the quilting world
- ◇ New homes for over 100 items: wall hangings, stockings, 3 project bags, special items, a queen size heartstring quilt, and a vintage full size quilt
- ◇ After taxes, fees for Square, and space fee, we had a net profit of over \$750

Does this idea intrigue you? Would you like to run with this idea? We still have some items for sale! Contact Brenda at [showdirector@mnquilt.org](mailto:showdirector@mnquilt.org).



"The devil is in the details" or "The difference between something good and something great is attention to detail" by Ludwig Mies Van Der Rohe and Charles R Swindoll, respectively. Close ups of 2023 Judged Entries [L] Mary Gerken "My Place or Yours" and [R] Marge Lawrence "That Town and Country".



## December Meeting Recap

Sarah Parker & Liz McHenry [ed@mnquilt.org](mailto:ed@mnquilt.org)

The December meeting was a very interesting presentation of Red and Green Quilts from the Poohs collection by Lori Lee Triplet . She gave a fascinating recap of some early dying techniques as well as why these colors were used in the quilts. She showed some fabulous quilts and the history behind them including information on the quiltermaker and the symbols contained within the quilts.



Quilt & Textile Collections

## Quilting for Others

Diane Rose [gfo@mnquilt.org](mailto:gfo@mnquilt.org)

QFO held their monthly workday early and called it Friday Finish-up Frenzy. About a dozen merry quilters came together to work on their own projects or to do some work for QFO. We also had a couple of zoomers at home busy working on beautiful projects (Hi Linda and Marie!).

Two tops were completed (see Five and Dime picture, pattern available on our [webpage](#).) and many more were started. Some were cutting out kits for people to sew at home. Wynn did a quick demo on an easy but beautiful fabric star ornament and shared fabric so people could make some there. There was even a free table with fabric and patterns for all. We shared a delicious potluck lunch (thanks Loretta for being our potluck mom!) and had a few door prizes to give out. All in all, it was all about what many quilters like best: sewing with friends, sharing food, free fabric, and learning a new skill!

Also on Friday a load of 150 beautiful Christmas stockings, along with a box of toothbrushes, tooth paste, and mini tissue packs, plus \$85 cash was delivered to Catholic Charities. They bring these donations to homeless shelters so kids will get a filled Christmas stocking. Thanks to all who helped in this worthwhile project!



**MQ's Day Retreats have been an exciting success!** Debra Svedberg [quilter@mnquilt.org](mailto:quilter@mnquilt.org)

The Day Retreats we've had so far have been fantastic! If you haven't been to one, it's three days of sewing here at MQ's location, but you go home to sleep. We book them for Thursday, Friday and Saturday. For \$45 for members and \$60 for non members you get one of the 8' long banquet tables for yourself. You bring whatever you want to work on. When you arrive coffee and hot water will be ready; donuts arrive sometime later in the morning. Meals are on your own, bring bag lunches and dinners, or go out, or order in. Get your projects done, see some old friends and make some new ones!

For the January 18-20, 2024 Day Retreat I only sent the email out to members once, and it's sold out. If you want to get on the waiting list, you can click [this link](#) and start registration and it will tell you it's closed and ask if you want to put yourself on the waiting list. Follow the prompts. Some registrant's schedules change the week of the retreat and openings become available.

The next Day Retreat will be April 18-20, 2024 and the invite will be emailed to members in January. If it doesn't fill up, non members receive the invite a week later.

I need 2 hosts to run things for me, one that opens everything in the morning and make coffee, and one that closes up every night. In exchange you also get to sew, and register for FREE! Email Debra if you're interested in hosting a future Day Retreat.



## Spring Getaway 2024!

Education Directors: [ed@mnquilt.org](mailto:ed@mnquilt.org)

MQ's Spring Getaway is at Camp Wapo in Amery WI, and starts Monday March 18 and ends on Thursday March 21. Enjoy 4 days/3 nights of sewing with 30+ other quilters working on whatever you want!

The "deets":

- We love being in the Crossfire Building for sewing with full windows on 3 sides to all the nature and the lake outside (pictured below—a summer picture. You'll be looking at a winter scene).
- Each quilter gets a table and chair. Bring whatever you want to work on, this is a very laid-back Getaway!
- We put 4 quilters in each large bedroom, where there are 4 bunkbeds, (we only expect you to use the bottom bunk). Each room has 3 separate spaces, one has 2 sinks, one is a private toilet room, and one is a private shower room. You'll need to bring your own towels, and bed linens or a sleeping bag.
- About a block's distance away is a dining hall where we will be provided with 6 meals: Monday night's dinner, Tuesday and Wednesday's brunch and dinner, and Thursday's breakfast only, all served buffet style.
- Cost is \$203 for MQ members and \$225 for nonmembers.
- Leah Doherty is your host. You can ask her questions at [doher001@umn.edu](mailto:doher001@umn.edu)

Join the fun!

Click on this link to see even more details and/or register: <https://cvent.me/000kmD>



## MQ Needs a Newsletter Editor

Wanda Shelton, [jouwan2420@gmail.com](mailto:jouwan2420@gmail.com)

Minnesota Quilters needs a newsletter editor. I know this because I recently resigned. I have been diagnosed with metastatic cancer, and the treatment leaves me with too little energy and stamina to continue many of the activities I enjoy.

Being newsletter editor is the best job in any quilt guild. I know that because I've done it for many quilt guilds (and other organizations) in many states since the late 1970's. Let me talk you into considering this assignment.

What are the benefits to you? First, you provide a valuable service to the guild. Each newsletter sets the tone for how the guild presents itself to the world. Second, you get to know the members in charge of running the guild and learn what is coming down the pipeline, eventually. Third, you get to know the committee members and the volunteers who have the actual day-to-day interactions that make MQ the guild that it is. Fourth, people get to know you. "You're the new newsletter editor! Congratulations; you'll do great." A wonderful way to meet people.

Looked at like that, it's a great job for an introvert (which I am). People are supposed to contact you.

What skills do you need? Typing, mostly. Software like Word or Publisher or similar programs in Apple computers are geared toward publishing. Remember when *desktop publishing* was a thing decades ago? Suddenly everyone was an editor. You probably are, too, with Facebook, Instagram, etc.

I used Word and Publisher for text, and for photos I used Word and the simple program called Paint. There are more sophisticated programs, but the basics are fine. No extraordinary skills are needed.

While I don't have energy to do the newsletter itself, I can be a resource for you as you settle into the process in the first months. I can also copy-edit (proofread) your issues and offer advice and background. Before long, you'll be a skilled and experienced newsletter editor.

If you are ready to sign up, contact Debra at the office, [quilter@mnquilt.org](mailto:quilter@mnquilt.org) or 651-224-3572. If you have questions and want detailed answers, call me, 651-487-7197, and together we'll find that final, gentle nudge that gets you started. Thank you and best wishes.

### Bulletin Board

**January 5–7, 2024, Plum Creek Quilters Quilt Show**, Friday – Sunday, 9 am to 4 pm, hosted by Sargent's Nursery, 3352 N. Service Drive, Red Wing, Minnesota. Quilts, vendors, door prizes. \$5 admission.

**March 27—April 19, Dakota County Star Quilters Quilt Show**, at the Dakota County Historical Society Museum, 130 3rd Ave N, South St Paul, MN. Wednesday and Friday 9 am to 5 pm, Thursday 9 am to 8 pm, and Saturday 10 am to 3 pm. Donation of \$5 to Museum. April 9 at 1 pm and 7 pm presentation by Carol Hancuh. [www.dcsq.org](http://www.dcsq.org)

**May 3-4, Maple Grove Quilters Spring Fling Quilt Show**, Maple Grove Community Center, 12951 Weaver Lake Road, Maple Grove, Minnesota. Friday 10 am to 7 pm, Saturday 9 am to 4 pm. Quilts, award-winning raffle quilt, challenge, boutique, vendors, demonstrations. \$7 admission.

**There is still time to jump in!** Karen Root and Wendy Kieser [membership@mnquilt.org](mailto:membership@mnquilt.org)

2024 will be packed with quilting adventures for beginners to experienced quilters. Time to update your membership, or sign-up for the first time, and get ready for what lies ahead. Beyond the monthly group meetings (Zoom on Thursdays / in-person and Zoom on Saturdays), there are retreats and getaways plus quilt challenges and a quilt mystery planned.

The Minnesota Quilt Show will be held this June in Duluth – do not miss this! There are also charity quilting opportunities (Quilting for Others), historical study (Minnesota Quilt Project), and State Fair quilting demonstration outreach. Truly something for everyone. Read all about it in the monthly newsletters.

Try – Learn – Grow – Expand    Dare to jump in and see where you land!



Teryl Rosas put the binding on her ballerina quilt at the November Day Retreat. In person this quilt is absolutely stunning!  
Prima Ballerina Quilt Pattern by Veruschka Zarate of Pride and Joy Quilting.

## Important facts:

### MQ Board Meetings

[Board@mnquilt.org](mailto:Board@mnquilt.org)

Any member can attend the monthly board meetings. Meetings are scheduled for the fourth Tuesday each month at 6:30 p.m. Zoom links are on the MQ events calendar at <https://mnquilt.org/eventschedule/> or request it from a board member.

### Minnesota Quilters on YouTube:

Minnesota Quilters has several videos online; catch up on the ones you missed or revisit ones you'd like to see again.

<https://www.youtube.com/@minnesotaquiltersinc>

### SignUpGenius:

Linda Wines and Laurie Klinkhammer [volunteer@mnquilt.org](mailto:volunteer@mnquilt.org)

MQ needs your help. Please click on this link to take a look at the Volunteer needs to see if you are able to help. The site lists volunteer opportunities. Save the link for additional ways to participate in MQ activities and volunteer often and in any capacity that you can.

<http://www.signupgenius.com/go/minnesotaquiltersinc>

### Instagram

Have you been on MQ's Instagram? <https://www.instagram.com/mnquilters/>

### Show and Tell for the Meetings

Jude Edling [showandtell@mnquilt.org](mailto:showandtell@mnquilt.org)

Please share your quilts, your gifting quilts, your quilty gifts, all quilt related things gifted and received! Also, if you have any photos from the 2023 show or from past Duluth shows, especially photos of volunteers and people at the show, please share the photos and the stories. Our stories build community. As always, send photos to [showandtell@mnquilt.org](mailto:showandtell@mnquilt.org), thank you!

### 2024 Mystery Quilt—Venetian Piazza

Suzy Webster has designed a mystery quilt for Minnesota Quilters once again. Register at the link below. The first clue will be sent in January 1, 2024.

\$36 for members and \$46 for nonmembers.

The quilt's title is Venetian Piazza, and it has nothing to do with pizza. If you register for the Mystery be sure to join the MQ mystery quilt Facebook page to interact with other quilters who are making the same quilt.

To register and join the fun: <https://cvent.me/XR5DQe>.





# Thank you to these 2024 sponsors of The Minnesota Quilt Show

## Diamond Sponsors

# BERNINA

*made to create*

[www.bernina.com](http://www.bernina.com)

Sew With Me  
Duluth, MN

[www.sewwithwi.com](http://www.sewwithwi.com)

Pine Needles Quilt & Sew  
Rochester, MN

[www.pnqs.net](http://www.pnqs.net)

## Gold Sponsors



Country Loft Quilt & Design – Innova  
Forest Lake, MN

[www.countryloftquilt.com](http://www.countryloftquilt.com)



[www.elna.com](http://www.elna.com)

1st Sewing Center  
Bloomington, MN

[www.firstsewingcenter.com](http://www.firstsewingcenter.com)

# JANOME

Reliability by Design

Sew With Me  
Duluth, MN

[www.sewwithwi.com](http://www.sewwithwi.com)



Minnesota  
Quilters inc

Members of the Board of Directors

Silver Sponsors



Cherrywood Hand-Dyed Fabrics  
Baxter, MN  
[www.cherrywoodfabrics.com](http://www.cherrywoodfabrics.com)



Jeri's Quilt Patch  
Norway, MI  
[www.jeriquiltpatch.com](http://www.jeriquiltpatch.com)



Threads & Ewe  
Magnolia, TX  
[www.threadsandewe.com](http://www.threadsandewe.com)

Bronze Sponsors



*original applique patterns inspired by the world around us*

Eye of the Beholder Quilt Design  
Milliken, CO  
[www.eobquilt.com](http://www.eobquilt.com)



Quirky Quilt Shop  
Cushing WI  
[www.quirkyquiltshop.com](http://www.quirkyquiltshop.com)



Whether you watched on zoom or came to meetings in person, 2023 was a great year!

We had Robin Long, Bonnie Lundorff, Dawn Cook Ronningen, Patricia Belyea, a garage sale, a fabulous, successful Quilt Show, Meg Cox, School House, Tracy Trevethan, Diane Harris, Lori Lee Triplett, many Day Retreats, Get-aways, and I've probably missed quite a few things.



2024 is going to be full of more classes, lectures, retreats, get-aways, sewing days and a fabulous time with old friends and making new quilt buddies!

## Thank you to our Business Members for supporting Minnesota Quilters!

Barb's Designs  
29150 142nd St NW  
Zimmerman MN 55398

BERNINA  
Pine Needles Quilt & Sew  
1300 Salem Rd SW, #350  
Rochester MN 55902

Cabin Quilts  
4779 126th St N  
White Bear Lake MN 55110

Diane Pidde's Custom Quilting, LLC  
6241 170th Ave NW  
Anoka MN 55303

Eye of the Beholder Quilt Design  
2324 Carriage Dr  
Milliken CO 80543

Flying Heart Quilting, LLC  
6241 170th Ave NW  
Anoka MN 55303

Jeri's Quilt Patch  
703 Brown St  
Norway MI 49870

Just a Little Something  
2617 Daybreak Ct SE  
Rochester MN 55904

Lake House Crafts, LLC  
11037 Able St NE  
Blaine MN 55434

Marie's Memory Quilts  
6401 225th St W  
Farmington MN 55024

Perkins Dry Goods  
14525 Village woods Dr  
Eden Prairie MN 55347

Pine Needles Quilt & Sew  
1300 Salem Rd SW, #350  
Rochester MN 55902

Prairie Quilting, LLC  
11682 Mt Curve Rd  
Eden Prairie MN 55347

Purple Daisy Quilt Designs  
18315 Exodus Ct  
Farmington MN 55024

Quilt Appraisal  
19403 Pointe Trl  
Park Rapids MN 56470

Quilter's Clinic  
11533 Merrett St PO 114  
Fife Lake MI 49633

Quilting by Jill  
5529 30th Ave S  
Minneapolis MN 55417

Quilting Page, The  
1964 Rahnclyff Ct, #700  
Eagan MN 55122

Quirky Quilt shop  
2673 240th St  
Cushing WI 54006

Textilis Conservation  
1481 Van Buren Ave  
St Paul MN 55104

The Cutting Edge Quilt Shop  
485 S Dana Ave PO Box 516  
Rush City MN 55069

The Quilted Loon  
2511 15th St N  
St Cloud MN 56303

Valley Quilting  
6639 County 18  
Hokah MN 55941

Villa Rosa Designs  
12438 Loma Rica Dr, #A  
Grass Valley CA 95945

Whoopsa Daisy Farm  
5401 Samuelson Rd  
Duluth MN 55811

Wishing Well Quilts  
15742 Hershey Ct  
Apple Valley MN 55124

Woodland Ridge Retreat—Dye  
Candy  
PO Box 27  
Downsville WI 54735

Busy Day Retreat quilters sewing. Left, center, right: Sandra Johnson, Michele Keppen, and...I can't tell who it is from the back!



