

THE MINNESOTA QUILT SHOW – YOUR SHOW - IS ALMOST HERE!



The Minnesota Quilt Show is returning to the Duluth Entertainment Convention Center (DECC) June 13 – 15. The quilting scene in Minnesota is vibrant with quilt shops, guilds, and shows throughout the state. The Minnesota Quilt Show connects quilters in the largest quilt show in the state and is presented by Minnesota Quilters, Inc. The show not only has quilts, classes, and vendors, it also has some extra features: quilt appraisals, scavenger hunt, Sewcial Lounge, Meetups, and a chance to contribute to charity quilts at the Quilting for Others area. The show is open 9 – 5 on Thursday and Friday with admission \$15 and 9 – 4 on Saturday with admission \$12.

Come to the show to have fun!

Let's talk quilts! While they may all fit the definition of a quilt, the pieces on exhibit range from designs using traditional quilt blocks to abstract designs to pictorial renderings. Anyone can enter a quilt in The Minnesota Quilt Show - from across the state and beyond, to master quilters and youth that are just beginning. 417 quilts were entered – about 100 more than last year! The Judged Exhibit has different categories including a new one: upcycled in which the quilt is made from materials that were previously used for something else such as clothing, tablecloths or old quilts. Nationally certified judges critique quilts in this exhibit with over \$20,000 in prize money awarded. The non-judged exhibit also offers a wide range of styles as well as the results of the 2023 Mystery Quilt-along. And not to be missed are the youth quilts!

Continued on next page.

Continued from previous page.

Quilt for Sale! When you see this green card next to a quilt, that means the quilt is for sale and could be yours. These quilts are entered in a variety of categories and selling in a wide range of prices, from Claudia Clark Meyers' Nine-Patch Puzzle, a 72" x 72" quilt that was one of 18 finalists in the National Quilt Museum's "Nine Patch" challenge New Quilts From Old Favorites for \$1,800, to Amy Fennewald's entry for the 2024 Challenge quilts for \$125. Whether you're looking for a gift or something to hang on your wall (we won't tell non-quilters to look at the label to see who made it!), we're sure you'll find something to delight you. Some or all of the proceeds from each quilt sale will benefit Minnesota Quilters, so we're hoping you'll be as excited by this new opportunity as we are. Support local artists!



THIS QUILT IS FOR SALE!

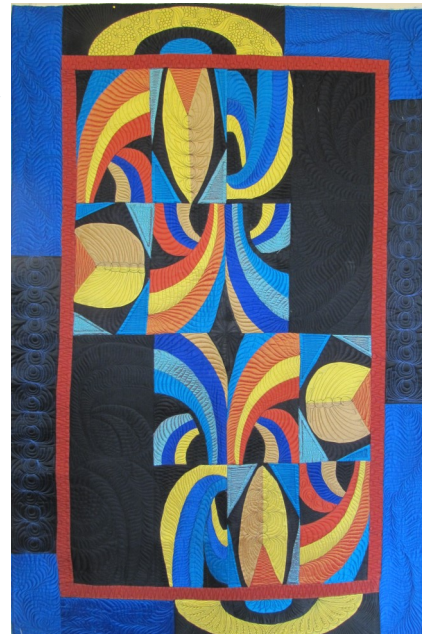
This unique creation is offered for sale by its maker.

Price: \$ _____ Quilt Number _____
Quilt Name _____

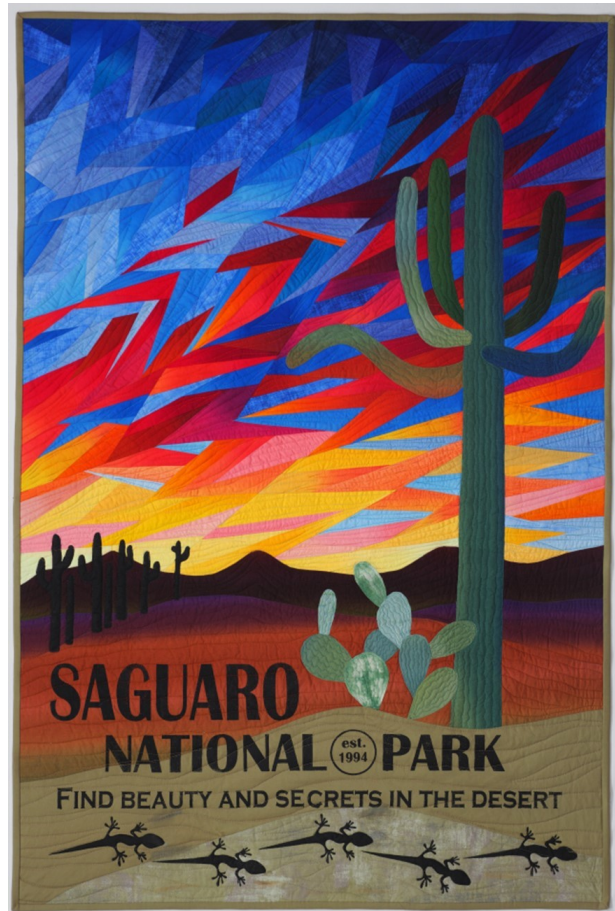
If you would like to own this quilt

1. Note the information on this card (or take a photo of it)
2. Come to the Information Table in the Edmund Fitzgerald room (food court) to pay for it
3. Decide how you would like to receive it after the show.

All sales are final!



Special Exhibits are brought in from across the country although the most well-known one originates right in Minnesota. Each year Cherrywood Hand-dyed Fabrics from Baxter, MN sponsors a challenge focused on a theme and using a limited color palette, inspiring quilters from around the world to create a 20" x 20" original quilt. This year's theme is Monarch with an array of oranges, greens, and black and white. From 472 entries, the following quilters from Minnesota were selected to have their quilts travel throughout the country for the coming year: Lori Adamietz (Judge's Choice award), Terri Bahn, Patricia Basch, Jude Edling, Enid Gjettlen Weichselbaum, Kim Klocke, Jennifer Kornbaum, Shari Lauren (Honorable Mention), Laura Nisi, Izabela Pokora, Shelli Ricci, Helen Smith Stone (also Minnesota Quilter of the Year), Susan Stevenson, and Cindy Wilson. Ninety of these quilts will be on display. Other special exhibits not to be missed are Vicki Conley's *Inspired by the National Parks*, Carol Hancuh's *And the Beat Goes On*, and the *Community Quilt Project* created during events hosted by the Minnesota African American Heritage Museum and Gallery.



Lectures Are offered throughout the show with topics including studio design, quilting ephemera, pattern designing, and English Paper Piecing. Tickets are available at the show for \$15. Dozens of workshops are available including a schoolhouse series on Thursday designed just for beginners. You can sign up for those at the show and supplies and kits will be available. You can also take a full day workshop and learn all the steps for making a Disappearing Nine-Patch quilt.

More inspiration can be found in our **vendor booths**. There will be over 65 vendors including 20 new ones selling sewing machines, fabric, patterns, thread, tools, yarn, furniture, and more! Be sure to make a shopping list and plan to test drive some machines and long-arms! Test drive ALL of them!

Visit our website for more information, to register for workshops, and to volunteer www.mnquilt.org/mq2024.



Things to do at The Minnesota Quilt Show!

Check out these fun things to do and connect with other quilters and fiber artists enthusiasts!



- **Sewcial Lounge, located in Gooseberry Falls 2 ▲**

Open 8 am – 9 pm on W, Th, and F; and 8 am – 4 pm on Sat.

This space is dedicated to informal sewcialing or even sewing! Gather with your friends or guild members or drop in on your own. There will be an ironing station set up and you are welcome to bring in your machine and keep working on your project from workshops. If you are interested in landscape and art quilt, drop in Thursday at noon for a Meet-Up.

- **Exchange Hub – NEW!, located in Edmund Fitzgerald**

Fiber arts includes so much more than quilting! Experience other fiber arts and organizations at this hub. You might watch a demo of weaving, spinning or rug hooking. The schedule will be in the show guide.

Continued on next page

- **Connect Table, located in Edmund Fitzgerald** ▶

Looking for a guild located in your area of the state or that focuses on the same style that you enjoy? You may just find them at The Connect Table. This is also the spot to find fabulous raffle quilts! Check out the quilt made a couple of decades ago that featured the locations of guilds in the state back then.

- **Scavenger Hunt**

Fun for kids and adults, can you find quilts that fit the clues! Pick up at the Board of Directors table in Edmund Fitzgerald. Complete the hunt for a fat quarter of fabric. ▶

- **Appraisals**

What does appraisal involve and why appraise? Allison Rainboth is returning and will be appraising quilts during the show. Find her on the show floor.

- **Learning Stage, located in Paulucci Hall**

Demos and speakers are scheduled throughout the show – see the show guide for the schedule.

- **Raffle Baskets, Edmund Fitzgerald**

Ooooo – wait ‘til you see what we have! Purchase as many \$1 tickets as you want and you may win!

- **MQ Town Square, located in The Link**

Another hub for activity is the MQ Town Square!

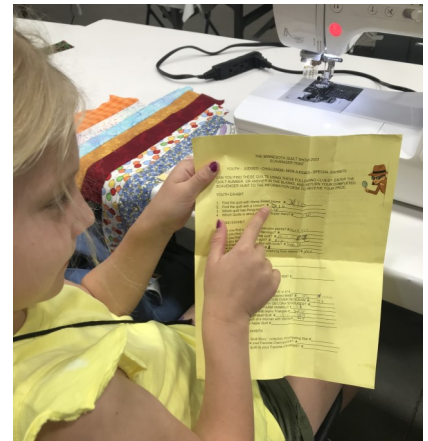
1. Quilter of the Year: meet Helen Smith Stone and see her amazing collection of quilts!
2. Quilting for Others: Itching to sew? Sit down and make a block for a charity quilt! ▶
3. Minnesota Quilt Project: vintage, vintage, vintage! Opportunities to learn and buy!
4. MQ Mercantile: new shirts, water bottles, stickers, and window clings!
5. Pattern Designer Showcase: find us in the MQ Mercantile Booth

- **Quilting For Others**

Diane Rose and Aileen Lively qfo@mnquilt.org

What are you going to do when at the Minnesota Quilt Show when your feet hurt and your credit card has reached its limit? You are going to go to the Quilting for Others booth in the Town Square in the “Link”!

Why do I want to go there? At the QFO booth you can sit and sew! We have machines on loan from sewing machine vendors and simple projects you can work on while chatting with your friends. It takes 80 blocks to make a twin sized quilt but you know what they say! Many hands make light work. The machines are also for sale so if you really like the machine, you can purchase it for a good price.



Continued on next page

Continued from previous page.

Who else is there? You can come with your friends or make a new friend while sewing for charity. Win-win! Speaking of winning, when you are done sewing, you can draw for a chance to win a door prize!

When is QFO open? We are open the same hours as the Show, except we are closed during the Wednesday evening preview event.

The Minnesota Quilt Show: Preparing for your Trip

I am absolutely a checklist person if you haven't figured that out. Here's my checklist for getting ready for traveling to the show!

- Final changes to advanced registration must be made by June 1. Any workshops or lectures to add? Banquet tickets? Project bags?
- Workshops:
 - Print out the supply list and start gathering your items.
 - Do you need to bring your own sewing machine? Your supply list will let you know if a machine is needed. Some classrooms have machines provided and you would have received an email about that. This information is also on the show website. Do you need a ¼" foot or walking foot? Do you have your power cord?
 - Is there a kit? You'll be paying the faculty member directly during the class so bring check or cash in case the faculty member isn't equipped for credit cards.
 - Schedule: When are your workshops and lectures? Check the website for the Learning Stage schedule and other events you want to attend. Sign up to volunteer.
- Purchase Daily Tickets if needed via MQ's online store (www.mnquilt.org/mq-store) by June 3 or at Duluth area Quilt Shops. Daily and Multiday tickets can be bought at the show.
- Make a pair of placemats for the President's Challenge. Bring them to MQ by June 6 or turn in at the Board of Directors table at the show. Thank you!
- Shopping List
 - What fabrics do I need for projects? Notions, tools, thread, patterns?
 - What am I looking for in a new sewing machine?
 - What new techniques do I want to explore and need supplies for?
 - See the Vendor List on the show website if you want to drill down further!
- Prep and drop off your entered quilt! By the time you read this, most of you will have completed this task.
- Get some dollar bills for the bag check and raffle (no credit cards allowed). For the raffle, print out labels with your name, email, and phone number.
- Bring your phone charger. Practice doing a QR code with your phone.

Maps and parking information are on the show website, www.mnquilt.org/mq2024, Planning your Trip.

- If you are staying at a hotel in Canal Park, use the blue footbridge by the William Irvin boat and enter the DECC at Entrance G. You'll be in the Harbor Side section. Take the escalator or elevator up to the 2nd floor and follow signs to the City Side section. You'll take the elevator or stairs down to the 1st floor. There isn't a sidewalk along the vehicle entrance off Harbor Drive so this is safer.

Continued on next page.

Continued from previous page.

- Once you arrive, be sure to get a Show Guide. Use the map inside to get the lay of the land. The Edmund Fitzgerald room will be a hub of activity: food, raffle baskets, Connect Table, Volunteer Check in, Bag Check and more! The show floor will be both Pioneer and the Arena. Classrooms are on both the first and second floor. We are not using the Harbor Side classrooms. If you registered, get your packet. Included will be your workshop list and locations, tickets, and name badge.

Pack a great attitude! Be ready to help others, compliment the vendors on their selection, congratulate quilters on completing and exhibiting their quilts, and thank the many volunteers for making this show possible!

What's New at the MQ Mercantile?

We will have new items for you in the MQ Mercantile at The Minnesota Quilt Show - and if you miss the show, you'll be able to purchase online and at membership meetings afterwards. Have you found your window cling to not be so clingy plus it has the old logo? Are your MQ clothes clingy and you want to get something better fitting? Are you finally drinking more water? Are you getting organized - truly? Then you'll be interested in our water bottles, storage bags, window clings, stickers, and new T-shirts and denim shirts. The MQ Mercantile is part of the MQ Town Square and will be located in the Link on the show floor. Pictured is some of the new merchandise.

T-Shirt with new design and Denim shirt w/ logo (guy not included); tumbler, 5" white circle of logo window cling (black is not part of window cling), colored zipper bags in assorted sizes and green zipper bags with black logo.



Signing up for Lectures and Workshops while at the Show

Arriving at The Minnesota Quilt Show and realizing that you should have signed up for a lecture or workshop? No worries - we've got you! You can buy individual lecture tickets and lecture passes at the show at either Advanced Registration or Daily Tickets. Want to add another workshop to your schedule? You can modify your existing registration until the very end of the show. Haven't registered for any workshops at all? Advanced Registration can help you with that as well. They will have supply lists for all the workshops so you can see if it is going to be possible for you to take a workshop. Many of our workshops will have sewing machines provided or don't need a machine and there is a full vendor hall with all the supplies you might need.

We especially want to encourage beginning quilters to sign up for our Schoolhouse Series on Thursday taught by Rose Allen. There are 4 sessions and you'll learn about preparing your fabric, piecing for success, quilting with your walking foot, and binding. Each session is only \$15. Another option is Friday's Quilt-making for Beginners - Disappearing Nine-Patch with Helen Smith-Stone.

Continued on next page.

Continued from previous page.

The following workshops still have plenty of spaces:

Dorset Wheels - Buttons with Kathie Kerler on Wednesday (full day)

Sunny Side Up with Gyleen Fitzgerald on Thursday (full day)

Chiffon Scarf Collage with Kathie Kerler on Thursday (full day)

Breaking the Code with Vicki Conley on Thursday morning

Inspired by Art with David Owen Hastings on Friday (full day)

Freestyle Bargello Landscape with Brandy Maslowski on Friday (full day)

Free-motion Hexagons with Karlee Porter on Friday afternoon

Seams Out Pillow with David Owen Hastings on Saturday (full day)

Whole Lotta Hexies with Brandy Maslowski on Saturday (full day). AccuQuilt has donated a Go-System to use during this class and Brandy will give it away as a prize at the end of class!

Behind the Scenes: The Final Countdown!

Just some snippets of what's happening in the couple of weeks before the show:

temporary storage locker being filled with supplies and quilts

planning of quilt displays using the photos submitted

adding new merchandise items to the cash register system

creating signs for the quilt exhibits and vendor booths

getting volunteers signed up

preparing packets for those that did advanced registration

printing tickets, show guides, and more (we actually have a schedule for our printer!)

lining up AV equipment for classrooms and events

training on using the cash register system

organizing raffle baskets

planning layout for banquet

finalizing the Learning Stage schedule

stocking up on merchandise to sell

making sure camera equipment is ready for the judging room

organizing ribbons

gathering special exhibit quilts

staying in contact with our vendors about moving in, paperwork, name badges, etc.

checking in with our security team

making sure our faculty have everything they need

fielding lots of questions and remembering things in the middle of the night!



Take the MQ Bus to the Show!

There may still be room on the MQ Show Bus on Thursday, June 13. It will be leaving Minnesota Quilters (253 State St., St. Paul) at 7:30 am. You'll arrive at the show at 10 am and leave at 5:15 pm. The bus will get back to MQ around 7:45 pm. Cost is \$70 for members and \$75 for nonmembers. [More info here.](#)

Events to add to your Quilt Week!

Quilt Walk! Tuesday evening, June 11 ►

Join the Show Committee for a stroll around Canal Park as we kick off our version of Quilt Week! Drape a quilt around your shoulders and let Duluthians know we are in town. Meet at 5 pm at the parking lot of the Maritime Visitor Center by the Pier. We have a room reserved at The Social House for dinner afterwards. Thanks to Lake Superior Modern Quilt Guild for hosting this event for us!

Preview Night! Wednesday, June 12, 7 – 9 pm

A festive evening is in store with music by BrassZilla! We will have an Awards Ceremony at 7:00 announcing the winners of the Judged Exhibit and the door prize drawing. Meet the Teachers: our faculty will be available to answer questions and sell their books and patterns. Vendors will be open for power shopping as well. Thank you to our sponsor: Juki. Tickets are \$12 at the door.

Social Hour and Banquet! Friday, June 14, starting at 5 pm

“Board the Ship” Annual Banquet



On Friday evening, June 14, we will host our Annual Banquet. June 1, 2024 is the last day to buy banquet tickets through online registration.

If you can't make it to the banquet, you can still join us for the “Hoist the Sails” social hour will start at 5 p.m. Everyone is welcome. Bring one or more of your orphan block/s. Find a new home for your block on Treasure Island, Fantasy Island or Castaway Island. A cash bar will be available. No ticket is required for Social Hour.

Continued on next page.

Continued from previous page.

At 6:30 p.m. we will “board the ship” (figuratively speaking) and be seated for the banquet and program. Tickets are \$45 for members and \$50 for non-members and must be purchased by June 1. You need to register for the show to purchase tickets and choose your meal.

The evening's featured speaker is Maria Shell. She will share her story, “Stitching Towards Discovery - An Improv Story”. For added fun on the high seas there will be a design challenge using Maria Shell's Kitchen Sink Quilting – The Art of Making Do technique. Along with Maria we will add two more sailors to have three artists create quilts using the orphan blocks in a design challenge. After the show the quilts will be completed and donated to the Quilting for Others program.

There will be drawings for door prizes including a Bernina sewing machine, a box loaded with quilting goodies and more. We know some of you enjoy costumes/dressing up and we encourage it! Don't miss out on the fun and we guarantee smooth sailing.

Questions? Email Tina Rohde and Colleen Shaskin at banquet@mnquilt.org

More events to check out! Sponsored by area quilts shops and guilds

Mini Shop Hop to Hannah Johnson Fabrics, The Quilted Dog, and Creations Quilt Shop. Thursday, June 13 at 9:30 am and 2:00. Very limited seating, \$40, reserve by calling The Quilted Dog at 218-879-3577

Quilt Exhibition on Superior Street, Thursday, June 13, 10 am – 3 pm. 4511 East Superior Street across the street from Hannah Johnson Fabrics. Brought to you by local quilters.

Modern Outdoor Quilt Show, Saturday, June 15, 10 am – 3 pm. 1831 East 8th Street, McTavish Quilt Studio & Fabrics. Brought to you by Lake Superior Modern Quilt Guild.

Quilt Entry

Those that entered quilts through registration should have now received their information packet and instructions. They were mailed out by May 10. If you did not receive yours, *email the committee(s) that you entered your quilt(s) in RIGHT NOW:* judged@mnquilt.org, non-judged@mnquilt.org, or challenge@mnquilt.org

Judged Quilt Committee:

Sarah Parker and Susan Kiester judged@mnquilt.org

This year we have 160 quilts that were entered into the various categories of the “Judged Quilts” Here are some tips to consider before sending or bringing in your quilts to MQ or McTavish:

1. Use a lint brush or roller to remove any pet hairs or any loose threads. DO NOT add any type of sprays or perfumes to your quilt that can cause allergy sensitivities.
2. Make sure you have added the required sleeve on the back noting the placement if you have a larger size quilt. These sleeves are used to hang the quilts at the show.
3. Confirm that your label is on the back in the proper location noting Title, Name of Creator and Quilter and then Date (year) the quilt was finished.
4. Put blue painter's tape over this label so it will be ready for the judging process. This tape will be removed after the judging process is finished.
5. Attach one of the tags to the bag to assist with the check in process.
6. Fold or roll your quilt into a cloth bag that has a closure at the top. We are hoping to have extra bags at the MQ location for a minimal fee if you are in need of one.

Continued on next page.

Continued from previous page.

7. Attach the second tag that was mailed to you onto the cloth bag.
8. Bring in your signature form that was mailed to you when you drop off your quilt. We will sign and return one part of it to you. You will need this form to pick up your quilt. If you are sending it in, please keep the one part designated for your receipt.

Final Step is to get ready for the exciting show ahead of you and for the excitement of seeing your quilt proudly displayed for all of us to appreciate!!

You never know who will be inspired by your quilt.

Thank you for entering your quilts. After looking at them in pictures in registrations, the Judging Committee is looking forward to seeing them in person. Enjoy the show!!!!

Non-Judged Committee: Carolyn Davidson and Dianne Conner nonjudged@mnquilt.org

We hope you are looking forward to the show as much as we are. The non judged area will be bustling and lots of opportunity to vote for your favorites. We have our regular area of quilts to view and some special groupings.

We have the MQ mystery challenge, always great fun to see the differences. We are hanging a mystery challenge from the Wood City Quilters (Cloquet) looking forward to seeing the exhibit.

Small wall hanging grouping of a Hawaiian pattern made by students of Pat Cox.

Maple Island quilts BQ Challenge is also being hung. The pattern designer gifted MQ some patterns which we raffled off inspiring some of us to jump in and make the design.

Come to the show to be inspired by colors, patterns, and fabric creativity.

Raffle Baskets are back this year and are again FABULOUS! Margaret Pidge raffle@mnquilt.org

Work is well underway for this year's Raffle Baskets. Many donations have been promised and they are coming in. The items will be put into 12-15 Baskets and there will be a designated ticket canister for each Basket. The estimated value of each Basket will also be shown on its attached list of contents.

The Raffle Booth will need to be staffed the entire time raffle baskets are displayed. Several volunteers have already signed up but we could use more. Even short term help to allow for breaks, meal time and the like would be appreciated. Friday and Saturday are especially thin.

Tickets purchased can be used for any item — one of the many Baskets or any of the three special offerings. We follow regulations per the state of MN, including payment is cash or check only.

All earnings from these ticket sales support the Quilt Show and other Minnesota Quilters projects.

The three special donations include:

a **Juki TL15** (pictured on right)

a **Quilt**

a **Retreat at A Place to Sew for 2 nights/10 people**



Continued on next page.

Here are the details of the 3 featured donations.

► **The Quilt** - "In Memoriam to Wanda Bush" created in 2008 by Wanda Bush, Rocky Fork, Tenn. Donated by an anonymous member, here is the note she sent when I asked her for the story of this quilt:

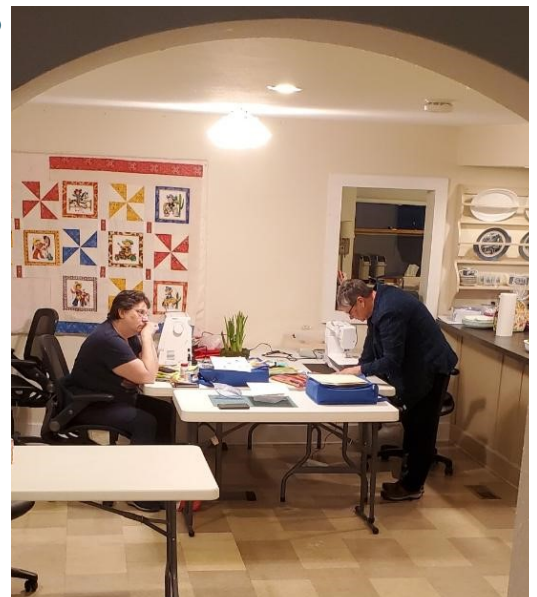
"This is the lady that created the quilt. She was elderly at the time and we needed a quilt for a fundraiser for the nursing home that my Mother-in-law resided in so that they could have [funds for] "Happy Hour Fridays". My mother-in-law contacted me to see if I could get one done in time but I couldn't. So another lady at the nursing home came up with this one. She had been quilting since she was a teenager. She used all of the fabrics that she had in her stash and she loved gardening-hence the flowers. The rest represented her starting block that she had learned from her Mom when she made her first quilt. I got to meet her and she was one amazing quilter. She had so much knowledge that she shared with me. It brings tears to my eyes because she is no longer with us. I wanted to donate this quilt because of her love of being a quilter and her passion to teach others. She touched my heart in such a special way and that passion needs to be shared. Now it is my turn to share. I ended up winning the raffle to my surprise-God's blessings to me! I have enjoyed it for several years. Now it is my time to share that passion and love of quilting! That is what this show is all about, isn't it?"



The Juki TL-15 Midarm — generously donated by vendor, **Country Loft Quilt & Design**, a Gold Sponsor. Details available at jukihome.com/products/TL-15, and it is pictured on page 10. From their website: "The JUKI TL-15 is a high-performance sewing and quilting machine. Continuing the TL straight-stitch sewing machine legacy, the TL-15 is packed with features to ensure industrial-quality sewing. These features include a drop feed for free motion sewing, an industrial subtension system for perfectly straight stitches, a variable speed control slider, a large work area, and six presser feet."

Retreat at A Place to Sew in DeSoto, WI, Gift Certificate for up to 10 people for 2 nights.

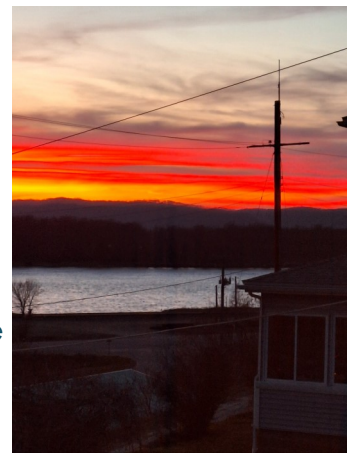
A personal story from last year's winner, my sister, of this same raffle prize: I am the oldest of 12, six of us sisters, who take a weekend every year to "be" together. Two of those sisters are also quilters who attend the MQ Quilt Show; one of whom won this raffle donation last year! She shared her Gift Certificate with all of us sisters. So, I enjoyed my annual Sisters Weekend at A Place to Sew with my five sisters, Feb 29-Mar 3 a few months ago. Two of us brought sewing machines (in pic below), two brought handwork (crocheting and embroidery) and the two who are avid jig-saw puzzlers brought their saved up stash of puzzles. The workspace allowed all of us to share the same room when we wanted to. There is a separate dining area which we used for dining and other activities, so we could leave our sewing projects and puzzles spread out overnight. *Continued on next page.*



Continued from previous page.

There are even 2, maybe 3 design walls which we put to good use. As shown in the pictures on the website (aplacetosew.com), the kitchen is adjacent to the project room, so those of us doing meal prep were right there and didn't miss anything.

DeSoto, WI is a VERY small town, near Prairie du Chien, WI (just across the Mississippi from Iowa, just south of the MN border - right where the three states come together on the map). It is about a 3 hour drive from downtown Minneapolis. We normally don't drive that far for our sisters weekends, but it was well worth it. We had beautiful, dry sunny days and were able to get out and enjoy walks in the neighborhood. There is a typical small town diner within walking distance. The Retreat Cottage is perched on a hill, and the views out over the Mississippi were amazingly restful and beautiful, even in the grey/brown of winter. ► The sunset view over the river from the cottage is pictured on the right. I imagine they would be magnificent with fall colors.



I'll be putting some of my raffle tickets in the Retreat canister this year as well! And, a reminder to those who love to enter raffles - bring along some address labels for the tickets you purchase, with your name, phone number and email!



Quilt Show Volunteering
Laurie Klinkhammer & Rhende Hagmeister
showvolunteers@mnquilt.org

There are lots of opportunities to help during the Show. Signups are organized by date for show week (Sun, June 9 to Sat, June 14). Pre Show signup covers everything before show week; Post Show the week following.

You'll most likely be looking for volunteer opportunities when you aren't in a class, attending a lecture or shopping so signups are by date and time.

During the Show stop by the Volunteer Booth at any time to see if there are any volunteer needs you could help with.

Check in Volunteer Booth on your way to your volunteer shift. Check in is your ticket to the door prize drawings for Volunteers.

Here are some of the ways many hands can help in the signups found at this link [2024 Quilt Show:](#)

Set Up & Check In Helpers. Help with show set up at the venue – Mercantile, MQP, Vendors, Banquet, Judging room, Classrooms.

Equipment Helpers. Help load and unload the truck near the MQ office and at the venue.

Judging Helper. Help in the judging room in a variety of ways – stacker, scribe (handwriting or laptop), reader, holder, folder, awards, runner and photography.

Quilt Hanging Helpers. Help hang Challenge, Judged, Non Judged, Special Exhibits and Youth quilts.

Booth Helpers. Help Admissions process admissions, Advance Registration distribute registration packets, Mercantile keep the booth tidy and with purchases, MQP (Minnesota Quilt Project) keep the booth tidy and with purchases, QFO (Quilting for Others) trimming and assembling blocks, and Raffle sell tickets.

Classroom Helpers. Assist faculty as needed, take attendance, replace waste paper bags if needed. Must be taking the class.

Faculty Buddy. Be a buddy to a faculty member during the show. Greet them at the registration desk when they arrive for their first class, assist getting supplies to their classroom, check in on them and be liaison with the Show Director who will connect you to the faculty,

Lecture Helper. Take tickets and tally attendance.

Wrap Up Helpers. Help after the Show take down and pack up Mercantile, Vendors, Classrooms, and Quilts – Challenge, Judged, Non Judged, Special Exhibits and Youth.

Quilt Helpers. Help with quilt drop off and pick up at the MQ office and venue.

Please note: Show volunteering requires volunteers to have an admission ticket obtained at the admissions booth, with advanced registration, or as a member meeting door prize. Classroom helper additionally requires class registration. MQ membership is appreciated but not required to volunteer at the show.



Admissions	admissions@mnquilt.org	Karen Root, Jan Schmidt
Advanced Registration	registration@mnquilt.org	Linda Wines, Karen Knoll
Banquet	banquet@mnquilt.org	Tina Rhode, Colleen Shaskin
Bus Tours	bustours@mnquilt.org	Margaret Lundberg
Challenge	challenge@mnquilt.org	Pat Curtner, Karen Kopitzke
Equipment Manager	equipment@mnquilt.org	Jude Edling
Judged Exhibit	judged@mnquilt.org	Sarah Parker, Susan Kiester
Learning Stage	learningstage@mnquilt.org	Jeanne LaMoore
Marketing	marketing@mnquilt.org	Jennifer Viedma, Susan Panelli
Merchandise	merchandise@mnquilt.org	Louise Somers, Mary Willard
Non-judged Exhibit	nonjudged@mnquilt.org	Carolyn Davidson, Dianne Conner
Photography	photography@mnquilt.org	Maureen Ohland
Printing	printing@mnquilt.org	Linda Wines
Quilt Entry Logistics	Quiltentryhelp@mnquilt.org	Sue Rufford
Quilting for Others	showafo@mnquilt.org	Diane Rose, Aileen Lively
Raffle Managers	raffle@mnquilt.org	Dorothy Sand, Margaret Pidde
Ribbons	ribbons@mnquilt.org	Kathie Simon Frank, Linda Huntzicker
Signage	signage@mnquilt.org	Donna Rockette
Special Exhibits	specialexhibits@mnquilt.org	Laura Nagel, Adrienne Lemberg
Vendors	vendors@mnquilt.org	Char Wenger, Jeanne LaMoore
Volunteers	showvolunteers@mnquilt.org	Laurie Klinkhammer, Rhende Hagemeister
Youth Exhibit	youth@mnquilt.org	Paulette Marini, Lisa Stene
Show Director	showdirector@mnquilt.org	Brenda Lyseng

Board of Directors**Oct 1 2023 - Sept 30 2024****President**Wynn Martin
president@mnquilt.org**Past President**(Open)
pastpres@mnquilt.org**President-Elect**(Open)
preselect@mnquilt.org**Treasurer**Marcy Huggins
treasurer@mnquilt.org**Secretary**Deb Norsten
secretary@mnquilt.org**Communications Co-Directors**Karen Kopitzke, Regina Zedell
comm@mnquilt.org**Education Co-Directors**Liz McHenry, Sarah Parker
ed@mnquilt.org**Membership Co-Directors**Karen Root, Wendy Kieser
membership@mnquilt.org**Operations Co-Directors**(Open)
ops@mnquilt.org**Volunteers and Employees****Editor**Debra Svedberg
editor@mnquilt.org**MN Quilt Project Chair**Carolyn Silflow
mqp@mnquilt.org**Show Director**Brenda Lyseng
showdirector@mnquilt.org**Bookkeeper**Amy Fennewald
bookkeeper@mnquilt.org**Office Manager**Debra Svedberg
quilter@mnquilt.org**Ongoing Events:****Wednesdays, Quilting for Others**, 11 am to 1 pm, pick up supplies and drop off finished work at Recovery Church. Keep an eye out for email and FB announcements that the 4th Wednesday of the month is a workday at MQ to get quilts and kits made.**Mondays, Zoom Bee Sewing Days**, June 3, 10, and 24; 10 am to 4 pm, Click to join:<https://us02web.zoom.us/j/82747265102?pwd=eUQvakhJUDNLSTdYV3JMR2JHbDhLUT09>

Meeting ID 827 4726 5102 with passcode 986969 is valid for all 2024 Zoom Bee quilting days.

Calendar of Events:**June 13-15, 2024, The Minnesota Quilt Show**, DECC, Duluth**July 11 and 13, Member meetings**, Thursday we have Debby Kratovil on Zoom. Saturday we have Susan Stein speaking in person and then an indoor picnic! More details next month.**July 18-20, Day Retreat**. Jennifer Schultz and Karen Knoll host. Email invitation has been sent.**August 1 and 3**, Sue Heinz is our speaker.**August 22-24, Day Retreat**. Loretta Stone and Kimberly Werner host. ***September 5 and 7**, Thursday has a great plan but not all the details have been confirmed! Saturday will be "Winners!".**September 15**, Scrappy Applique Workshop with Kristie Naranjo, 11:30 am to 6:00 pm CST. [Special Zoom Workshop!](#)**September 19-21**, Day Retreat. Loretta Stone and Liz McHenry host. ***September 25 to 29**, Fall Getaway!**October 3 and 5**, Thursday Jenny Lyon tells us how "Quilting is a Contact Sport" and Saturday is TBA.**October 17 to 19**, Day Retreat. Loretta Stone and Jennifer Schultz host. ***November 7 and 9**, Thursday with Lisa Thorpe.**November 21 to 23**, Day Retreat. Loretta Stone and Denise Mike host. ***December 5 and 7**, Thursday: a lecture called "Writing a book is like making a quilt: Common threads in the creative process" with Marie Bostwick. Saturday we will be together for a free sewing day.

The MQ website has the complete calendar of events.

<https://mnquilt.org/eventschedule/>

* Regarding Day Retreats, Loretta Stone only signed up to make sure we have the retreats, because without 2 volunteers they will not happen. She doesn't want to hog them all! If you would like to take her place at any of the months she is listed above contact volunteers@mnquilt.org. You get to attend for free in exchange for being a host.

DEADLINE for June Newsletter: Tuesday, June 18. Send newsletter articles and photos to editor@mnquilt.org. Later submissions may be saved for the following month's newsletter. The newsletter deadline is the Tuesday after the Saturday meeting.

July 11th at 7 pm: **Debby Kratovil** on zoom.

Turning 60 - The Joys of Hex: What's that - gasp? For the better part of 22 years I have revisited my favorite angle and 60 degree ruler (which I call my Power Tool) and have created dozens of traditional and innovative quilts. I will explain how to cut out many 60 degree shapes with ONLY your generic 60 degree triangle ruler. I introduce working with border prints, fussy cutting motifs - and share a LOT of quilts and samples to check out up close. Be prepared to be surprised, and enjoy every minute of it! Oh, and did I say that we don't use "no stinkin' y-seams"? ▶▶



To come to either or both of these meetings for free, in person or on zoom, join MQ for \$45 a year.

Join by clicking [here](#) and filling out the right side of the page and follow membership instructions.

July 13 at 10 am: **Susan Stein** in person and on zoom. ▲▲

Sampler Adventures: Susan started quilting in 1977 and doing surface design on fabric around 2003. She has been president and show co-chairman for Minnesota Quilters; has written six books and contributed to numerous others; was Minnesota Quilter of the Year in 2003; has taught many classes locally and out of state; was awarded the Spun Gold Award from Textile Center in 2011; and has made hundreds of quilts, wall hangings, and garments for publication, store samples, public buildings, and personal use. She co-owned a quilt shop from 1980-85 and owned Colorful Quilts and Textiles from 1995-2009. Currently her interests are mixed media art quilts and all kinds of surface design- painting, printing, discharging color, layering, adding digital elements, and writing on fabric. Sampler Adventures includes over two dozen quilts that show these old favorites going from predictable traditional to innovative contemporary. New settings will illustrate the endless possibilities for showing off block designs as well as surface design techniques, memories, themes, fabric collections, and more.

Join us for our second annual **Picnic Potluck** following the Saturday meeting. MQ will provide utensils, lemonade, plates and paper goods. Plan to bring a dish to share. We will use SignUpGenius for food needed. Stay tuned for details.

Looking for Local Talent We are always looking for local talent to present in person at our Saturday meetings. Do you know someone who teaches locally or offers a textile related presentation? Maybe that person is YOU. Please forward any suggestions on to the education@mnquilt.org

Quilting for Others has a workday once a month, usually the last Wednesday of the month. There is always lots of activity with people busy sewing, cutting, sorting fabric, or whatever else needs to be done. This time of the year there is also lots of activity related to the Minnesota Quilt show. And of course, we also are running our usual Wednesday pick up and drop off donations. Phew! That's a lot of stuff happening all at once! It is also a chance to sit down and enjoy eating lunch together. There are always treats, plenty of conversations and lots of laughter! In April, we had two large quilt donations from members Pam Plocek and Cheryl Holz. Many beautiful baby quilts were received and will make some new mother smile with delight. You do not need to be a member of MQ to join in the fun!

In May we are mixing things up a little with the dates. There will be no QFO on May 22 as the workers take a break for a retreat. Our work day will be moved to the next week, May 29 from 10-2. There will be no QFO on June 12 as we will all be in Duluth at the Show, taking QFO with us. Come look for us in the Town Square in the arena.

▼ Below Pam Plocek and Merle Pratt







Continued from page 13

Coming up:

If you enjoyed **Kristie Naranjo's** May presentation and want to learn more about the Scrappy Applique Technique, then we have a class for you in September. Kristie will be teaching a full day class on Scrappy Applique over Zoom. Click the link for more information and/or to sign up.

[Zoom Scrappy Applique Workshop with Kristie Naranjo](#)

Sunday, September 15, 2024 11:30am - 6:00pm CST

Looking for Local Talent

We are always looking for local talent to present in person at our Saturday meetings. Do you know someone who teaches locally or offers a textile related presentation? Maybe that person is YOU. Please forward any suggestions on to the education@mnquilt.org

You're invited to stop by the Minnesota Quilt Project booth at the show in Duluth.

You can:

- Learn about quilt documentation and why you might want to document your quilt and share your quilting story
- Learn about the resources available on the Quilt Index
- Get tips for quilt care and storage
- Get an up-close look at some of the quilts in the MQ quilt collection
- Shop the sale of donated quilts and quilt-related items - a project to raise funds for MQ education and outreach activities. Some of the quilts for sale are shown here:

If you would like to donate an item, contact mqp@mnquilt.org. Please notify us by June 1 to allow time to gather donations and prepare them for the sale.



Double wedding ring quilt from 1930's-40's.



Quilt made and beautifully hand-quilted by MQ founding member Elaine Strese

► ▼ **Jolene Baker** I finished this sweet little quilt right before the April meeting. It is from the Fat Quarter Shop, Cupid Box 2024 which included the pattern and the red and pink fabric I added the white background and the red for the binding. I quilted it on my mid- arm and had lots of fun.

In the sideways shot, I'm trying to show you the detail of the quilting that I did on it.



Calling All Award Winners!

No matter where you won,
we want to see the quilts.

We are planning a special Show
and Tell for award- winning quilts for
our September meeting.

Contact Liz or Sarah to tell us about
your award and the quilt.

Liz McHenry and Sarah Parker

Ed@Mnquilt.org

mctavish quilting studio & fabrics



1831 east 8th street, suite g101
duluth mn 55812
www.mctavishquilting.com

▼ ► **Karen Pence** This is my bonus grandson and my reason to start quilting a year ago. The striped quilt was the first one I made last Spring when I found out my bonus daughter was expecting a baby. I never thought I would become a grandmother and it has been such a joy to have him in my life.



Reminder!

Show and Tell for the Meetings

Jude Edling showandtell@mnquilt.org

Share your quilts and your stories! Sharing quilt stories is one way we build our community and connections. You can share your stories of quilt triumphs and disasters, quilts old and new, or lessons learned and re-learned.

You can also share your quilt-adjacent projects such as knitting, felting, dyeing, or any fiber technique. All the better if you blend other fiber techniques with quilting.

Zoomers and Roomers can be in the slideshow and tell their stories. Zoomers unmute and Roomers grab that microphone while someone holds your quilt. Email a project photo (small to medium size kb) and your name and a brief description/story to the email above.

▼ ► **Karen Pence ~**

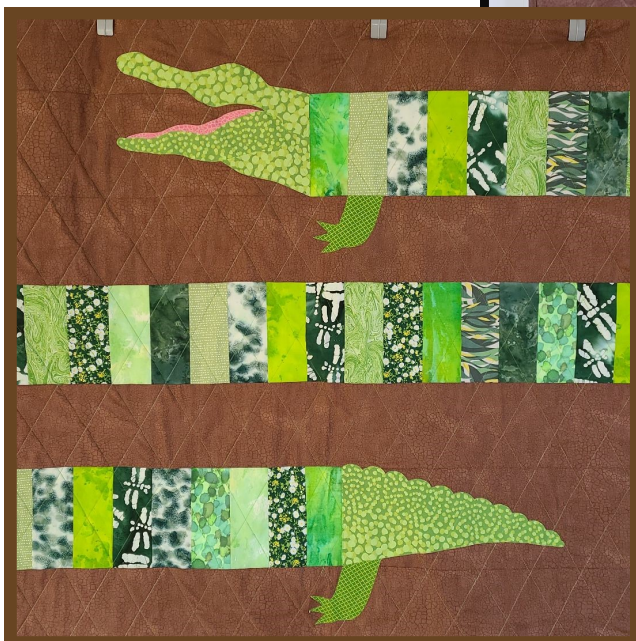
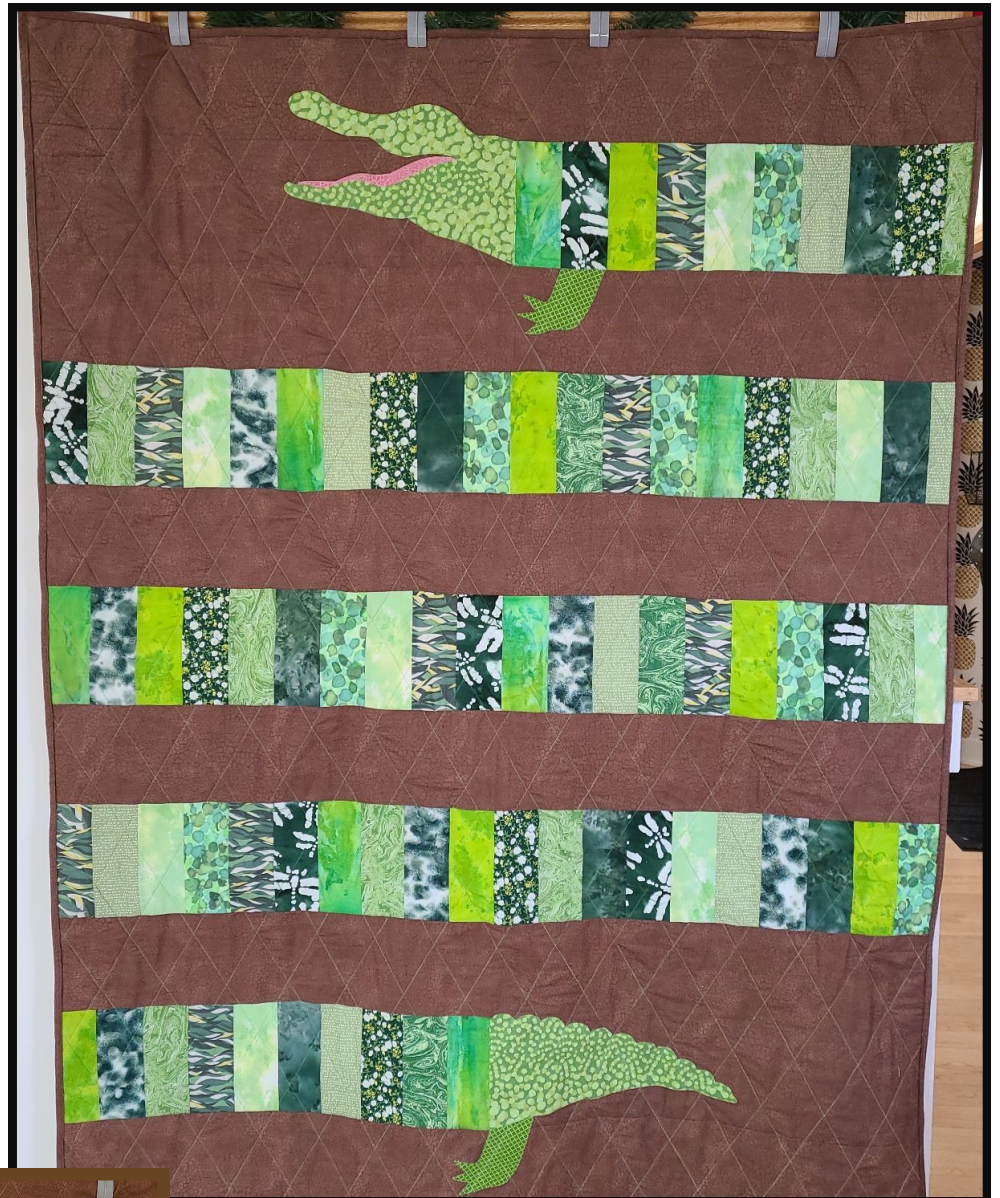
My quilting took a big leap forward throughout 2023 as I made quilts for everyone in the family for Christmas. I think that was about 15 quilts and a lot of smaller quilted items.

Two of my favorite quilts were inspired by Stacy Iest Hsu's "All Wrapped Up" pattern. Instead of a wiener dog quilt, I made a croco-gator for the kids and a mini croco-gator for the baby.

This was my first time doing applique on a quilt and I love how it turned out. I have found a love for designing quilts and playing around with patterns and fabrics. This is just the beginning for me and I'm looking forward to learning much more!

► For the kids

▼ For the baby



► **Jan Schmidt** ~ This is a three-yard-quilt, a queen size quilt composed of three different fabrics, and more than 3 yards of fabric. It's a gift to replace a worn out quilt.

▼ The white German shepherds were a gift from the free table. They are set in 12" blocks in this extra long twin quilt.



▼ Bottom left. This quilt is an extra long twin. I added sashing between the rows.

▼ Bottom middle. This another extra long twin quilt, I like to use 8" squares as 10 squares is 80", so just one more row of squares.

▼ Bottom right. One more extra long twin for my great niece, Laura, as a graduation gift, as she goes off to college.



Pat Curtner ~ Here's my wool creation from Tracy Trevethan's class.

I have to finish the buttonbush flowers and outline the bird. I may add more embellishments because, why not?





Clockwise from top left ▲

Carla Schommer ~ Carla finished her quilt top the same day as the Brita Nelson workshop! She said it was a fun workshop.

Kate Elkema ~ I actually finished a quilt top from Brita's "Making Magic" class on the same day, too.

I made ten blocks so I could use it as a table topper. It was a fun class, and I used only fabric I had in my own fabric "library", so I feel good about that, too.

Dianne Conner ~ These are the blocks I made last Saturday at Brita Nelson's workshop on zoom. What a fun class! She is a terrific teacher.

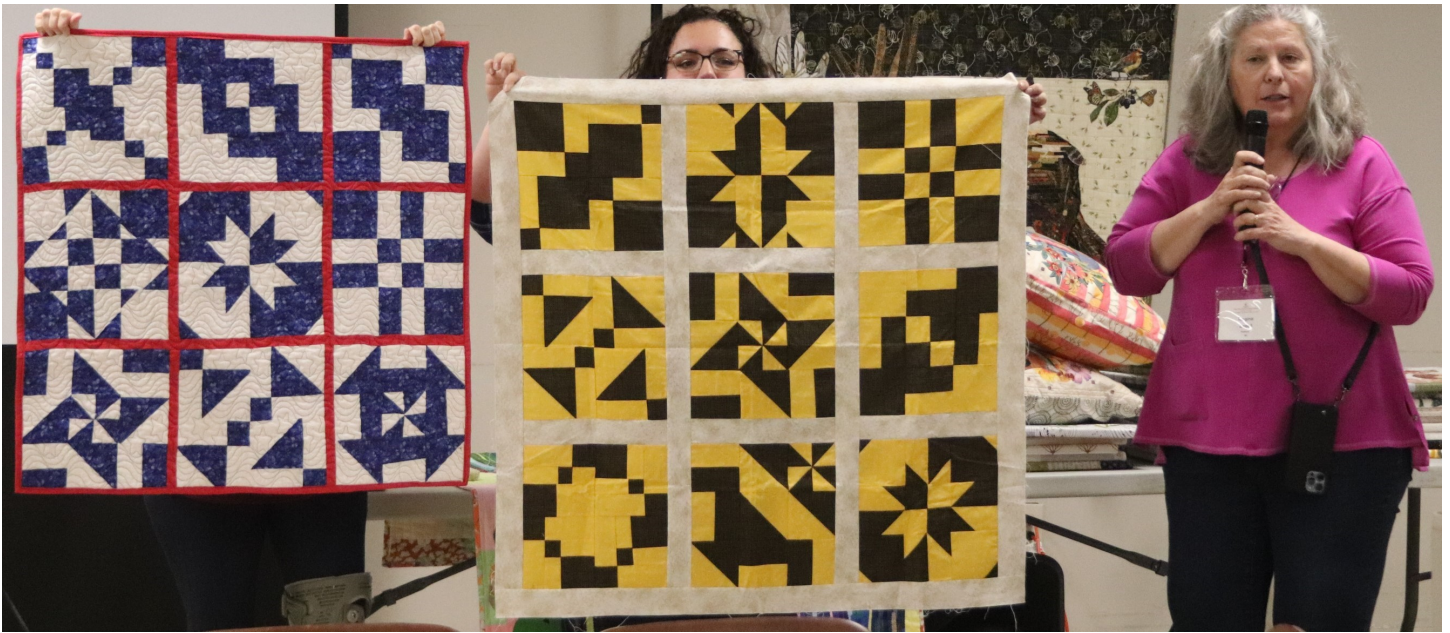
Maureen Ohland ~ I needed the design board for another project so I completed the Brita block quilt. It's a good reminder of the different ways to twist and turn!

Rebecca Vick ~ I finished mine! I'm so glad I took the class.

Vickie Osman ~ This is a Christmas quilt made with disappearing blocks.

Dorothy Sand ~ I finished mine!





Clockwise from top left ▲

Erica Vranek ~ Blue and White Disappearing 9 patch with red lattice in the left of the picture.

Regina Zedell ~ Her Disappearing 9 patch with yellow and black next to her. Regina is one of your Communications Directors.

Laura Nagel ~ Laura's quilt

Mary Tague ~ A mini Irish Chain she calls Wee Bit O'Irish.

Loretta Stone ~ Pot holders she made at the April Day Retreat, held up by Liz McHenry, one of your Education Directors.



May Meeting Show & Tell

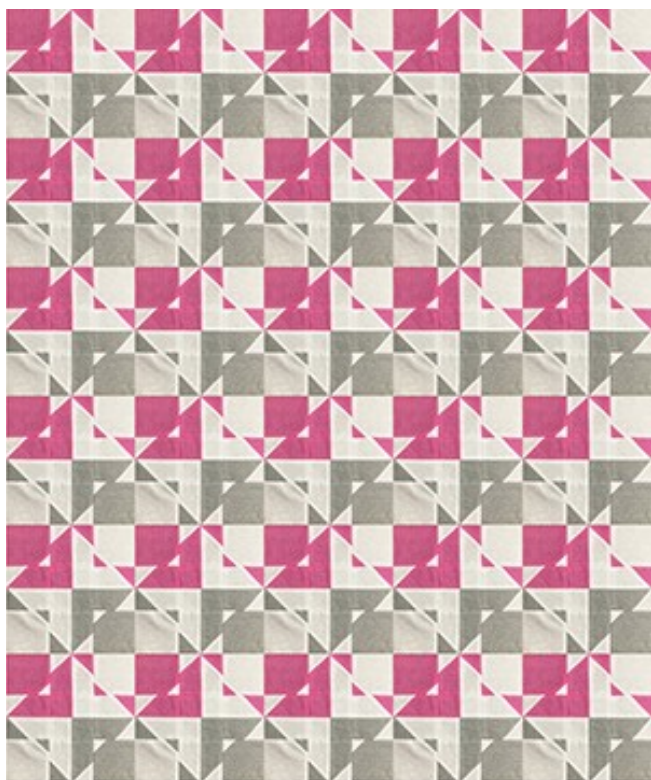
showandtell@mnquilt.org

Jude Edling ~ During Brita's workshop, I showed this block, a variant of #3. She said she hadn't seen that variant before. I emailed her the block photo and she returned 2 possible layouts below!



Mary Tague ~ Mary made the green and yellow quilt with a BQ pattern. It has monkey fabric in it!

(bottom picture)





◀ **Nancy Bekedam** ~ I saw the Thursday program is all about Scrappy Appliqué, so I'm sharing a photo of the lion quilt my 20-something year old daughter, Susanna, made after she came back from a mission trip around the world 4 years ago. She wanted to make a lion quilt, found the Scrappy Appliqué pattern online and made it in a couple of days! The border print has African animals on it as well. I quilted it for her using the "African Safari" edge-to-edge quilting design.

▼ **Paulette Marini** ~ Jeanne LaMoore and Liz McHenry struggle to hold Paulette's quilt that is very long! It's a Row by Row quilt from 2016.





▲ Jan Schmidt's Pinwheel Quilt.

Picking Up the Pieces

Laura Nagel

'E' is Not for 'Easy'

National quilt shows like AQS in Paducah and Festival in Houston are still thriving, and their promotional emails are so enticing. I click through the faculty list and the various classes being offered and wish for a winning lottery ticket so I could attend the convention long enough to partake in some of these courses and still have time to enjoy the show. In the meantime, I follow some of my favorite designers on Instagram to keep up with their accomplishments. One in particular is known as Messy Goat, actually Elaine Poplin, whose colorful quilts with words have always intrigued me. Imagine my excitement when I discovered that Elaine's Paducah class on fabric letters, called 'Outspoken', was being expanded to a hybrid class – both in-person and on Zoom.



Clicking on the link, I discovered that Cherrywood was sponsoring the class, and the registration fee included a huge bundle of Cherrywood fabrics in a multitude of colors. First, no wonder Elaine's quilts were so colorful, and second, the fabric was worth half the price of the class – a total win/win in my world.

Continued on next page.



Continued from previous page.

After another few clicks and fill in the blanks, and I was registered. The night before the class I gathered the few supplies needed and cut a few strips of fabric into various widths from 1 ½" to 2 ½" and charged up my iPad for the next day. The class started early (EST) for me anyway, but I was relaxed because I was home, in my quilt room with everything I could possibly need at my fingertips, cup of coffee at hand, and wearing my most comfortable clothes.

Now a Zoom class might not be for everyone, and I've taken enough to know they can fall on either end of the spectrum, and somewhere in between. But I was confident that regardless of the instructor's talents in teaching or technology, I would learn something new – so I logged on and 'Joined the meeting.' There were about seven students on site, and nine of us online. Elaine engaged us all with her introduction, expectations for class, and how to draw her assistance if we were remote learners. Time to begin.

This was hard, but I guess hard is good. Not a hard class, or hard work, but hard for me to get my head around. So this is what it feels like to 'be in the weeds' when you are on the bottom rung of a new learning ladder. I felt like I didn't know anything about how to be successful with this technique. I am so literal, follow the rules, line everything up with a ruler, etc. that this free-lance cutting and piecing was so foreign to me. The piecing technique was basically a combination of improv and paper-piecing; whacking off strips and pieces, sewing on angles, and not knowing what it will look like until you flip it over and press. Oh, and did I mention there was no pattern, it's all free-lance. Elaine said, "This process is very serendipitous, it's organic, just go with the flow." I knew it was going to be a challenging day.

Fortunately, Elaine explained every step, as many times as we needed to hear it. Her examples were picture-perfect and easy to adapt to our own letters. One of her first tips was to lower our stitch length, which I obediently dropped to 2.0mm. But I wasn't always happy with my angle or my color choice and found myself ripping out a few seams. Every time I ripped, I bumped my stitch length up a smidgen. Eventually I was back to my original 2.5mm. Who was I kidding that I wouldn't want to 'fix' something? (Really glad I was home, and the teacher couldn't see what I was doing.)

Our first letter was capital E, supposedly the easiest letter of the alphabet. Construction-wise, that may be true, but there are other aspects that come into play. All the fabrics for the actual letter pieces were supposed to be very light in color/value. I guess I wasn't brave enough to go with the assortment of lights in the kit or didn't have the confidence to trust my sense of color, so I chose to use one off-white Grunge for all the letters. That said, high contrast was the next rule for choosing the surrounding fabrics. OMG! What I didn't know about contrast took me aback. I tend to work in a Midwest medium value palette, and that's not what was needed here. And as I now know, value and contrast are not the same thing. When Elaine talks about contrast, she means vast and noticeable, not just a shade lighter or darker. Drastic is better.

At the end of the day, I was exhausted from learning and trying so many new skills, but I had acquired a great sense of pride and accomplishment in my three letters. Virat Kohli was right when he said, "Self-belief and hard work will always earn you success." An additional benefit of the class was the confidence building Elaine offered throughout the day. Reminders about learning a new technique is not the same as making an entry for a juried show; if you don't make mistakes, you're probably not learning anything; and a mistake is just an opportunity for a design change.

Right now, I'm still high on the process and playing with my Cherrywood fabrics. With a few more successful letters under my belt, I'm contemplating making names for my grandkids' bedroom doors, as they all have handwritten ones on notebook or printer paper with a few extra words of warning about 'keep out,' 'private,' and 'no boys!' I think I'll just stick to their names.

Treasurer's Report to the Membership

In our last Board meeting on April 23, I reported the following information about our current financial status. Please bear in mind we are in the "income phase" of our year, when income generated by the show from vendors and registrants comes flowing in. In the three months after the show, we will be in our "expense phase" of the year, when all the show expenses come due,

Although our savings may seem ample, we have tried to make sure we are able to withstand any events that may affect our stability. A somewhat amusing story to that point: I have been actively working to put insurance in place for our Duluth quilt show. In looking through past documents, I stumbled on a written exchange from 2014. In it, our insurance broker must have been trying to convince us to buy a policy that insured the show due to cancellation. The Board member discussing this said "what possibly could cause our show to be cancelled? A fire at the exhibition hall would be covered under their insurance. An accident destroying all the quilts traveling to the show? No, I can't think of a circumstance in which this could happen". I want to say I chuckled thinking in terms of 2020, but instead just shook my head, mourning the Covid years. So we are very conservative in protecting our guild financially, never knowing what may lie ahead.

Here are the figures:

US Bank checking \$69,620 (February \$107,754)

Morgan Stanley cash \$105,800

Morgan Stanley equities \$60,007

Morgan Stanley fixed income \$87,811

Total Morgan Stanley \$253,618 (February \$200,942)

Total financial assets on Balance Sheet: \$323,238 (February \$308,696)

Bulletin Board

June 12, Quilts in the Park, by Town and Country Days, at Gazebo Park, Paynesville, MN. Free

July 13, Quilts in the Vinyard, by Branches Winery, E6796 Old Line Rd

July 27, Becker Hearts & Hands Quilt Show, A Summer Spectrum of Quilts at Becker High School, 12000 Hancock St, Becker, MN. Saturday 9 am to 4 pm. Quilts, vendors, door prizes, scissor sharpening and raffle quilt. \$5 admission.

September 7-8, Hill City Quilt + Fiber Arts Show, at Gins Gym, 440 Main St, Hill City, SD. 9 am to 4 pm daily. Quilts, fiber arts, crafts for kids, vendors, trunk show & dinner. \$7 admission.

September 13-14, Apple River Quilt Guild 33rd Annual Quilt Show, at St Joseph's Catholic Church, 1050 Keller Ave N, Amery WI. Also vendors, raffle items, challenge and lunch both days. 9 am to 4 pm both days. \$5 admission

September 27-28, Chaska Area Quilt Club Quilt Show, at Chaska Community Center, 1661 Park Ridge Dr., Chaska MN. Quilts, Raffle quilt, vendors, small quilt auction and bed turning. Friday 10 am to 6 pm, Saturday 9 am to 5 pm. \$10 admission.

October 5-6, St. Cloud Heritage Quilters Show, at River's Edge Convention Center, St. Cloud MN. Saturday 9 am to 5 pm, Sunday 10 am to 4 pm.

October 18-19, Evening Star Quilters Quilt Show, at Mahtomedi Dist. Education Center, 1520 Mahtomedi Ave, Mahtomedi, MN. Quilts, sale, boutique, vendors, etc. \$5 admission.

October 18-19, Metro Quilt Expo, at Red River Fairgrounds, Fargo ND. Entries due 9/21/24, entries delivered 10/15/24. See www.fmquilters.org Friday 9 am to 6 pm, Saturday 9 am to 5 pm. \$10 admission

Thank you to these 2024 sponsors of The Minnesota Quilt Show

Diamond Sponsors

BERNINA

made to create

www.bernina.com

Sew With Me
Duluth, MN

www.sewwithwi.com

Pine Needles Quilt & Sew
Rochester, MN

www.pnqs.net

Gold Sponsors



Country Loft Quilt & Design – Innova
Forest Lake, MN

www.countryloftquilt.com

JANOME

Reliability by Design

Sew With Me
Duluth, MN

www.sewwithwi.com



www.elna.com

1st Sewing Center
Bloomington, MN

www.firstsewingcenter.com



Minnesota
Quilters inc

Members of the Board of Directors

Silver Sponsors



Cherrywood Hand-Dyed Fabrics
Baxter, MN

www.cherrywoodfabrics.com



Threads & Ewe
Magnolia, TX

www.threadsandewe.com



Jeri's Quilt Patch
Norway, MI

www.jerisquiltpatch.com

JUKI®

www.juki.com



Wildflower Quilt Co.
Lakeville, MN

www.wildflowerquilts.com

Thank you to these 2024 sponsors of The Minnesota Quilt Show

Bronze Sponsors

Eye of the Beholder Quilt Design

original applique patterns inspired by the world around us

Eye of the Beholder Quilt Design
Milliken, CO

www.eobquilt.com



Rosie Girl Quilting
Minneapolis MN
rosiegirlquilting.com

Quirky Quilt Shop

Quirky Quilt Shop
Cushing WI

www.quirkyquiltshop.com

Treats at in-person meetings

Any one can bring treats to the Saturday meetings to share with everyone!

MINNESOTA QUILTERS, INC.™
253 State Street
St Paul, MN 55107-1612

MQ News is the monthly newsletter for members of Minnesota Quilters, Inc.™, a nonprofit organization formed to find and unite quilters and quilt enthusiasts throughout the state of Minnesota and elsewhere. MQ News is published twelve times a year by Minnesota Quilters, Inc.™

The views expressed herein are not necessarily those of Minnesota Quilters, Inc.™ Although every effort has been made to provide timely and accurate information, Minnesota Quilters, Inc.™ shall have no liability to any person or entity with respect to liability, loss, or damage caused or alleged to be caused directly or indirectly by the information contained in this newsletter. This publication is intended to provide generalized information only and not to render professional advice. No part of this publication may be reproduced, stored in a retrieval system or transmitted in any form or by any means, electronic, mechanical, photocopying, recording or otherwise without prior written permission of Minnesota Quilters, Inc.™ © 2024. All rights reserved. *Deadline for submissions is the first of the month for the following month. Ads and articles may be sent to Minnesota Quilters, Inc.™ Editor, 253 State Street, St Paul, MN 55107-1612, or e-mail editor@mnquilt.org* The mission of Minnesota Quilters, Inc. is to nurture the art and craft of quilting through inspiration and education, to support our communities through our craft, and to honor our quilting heritage.
Established April, 1978.

For a printable form from our website go to: https://mnquilt.org/wp-content/uploads/2022/12/Form_MembershipFullPage.pdf